

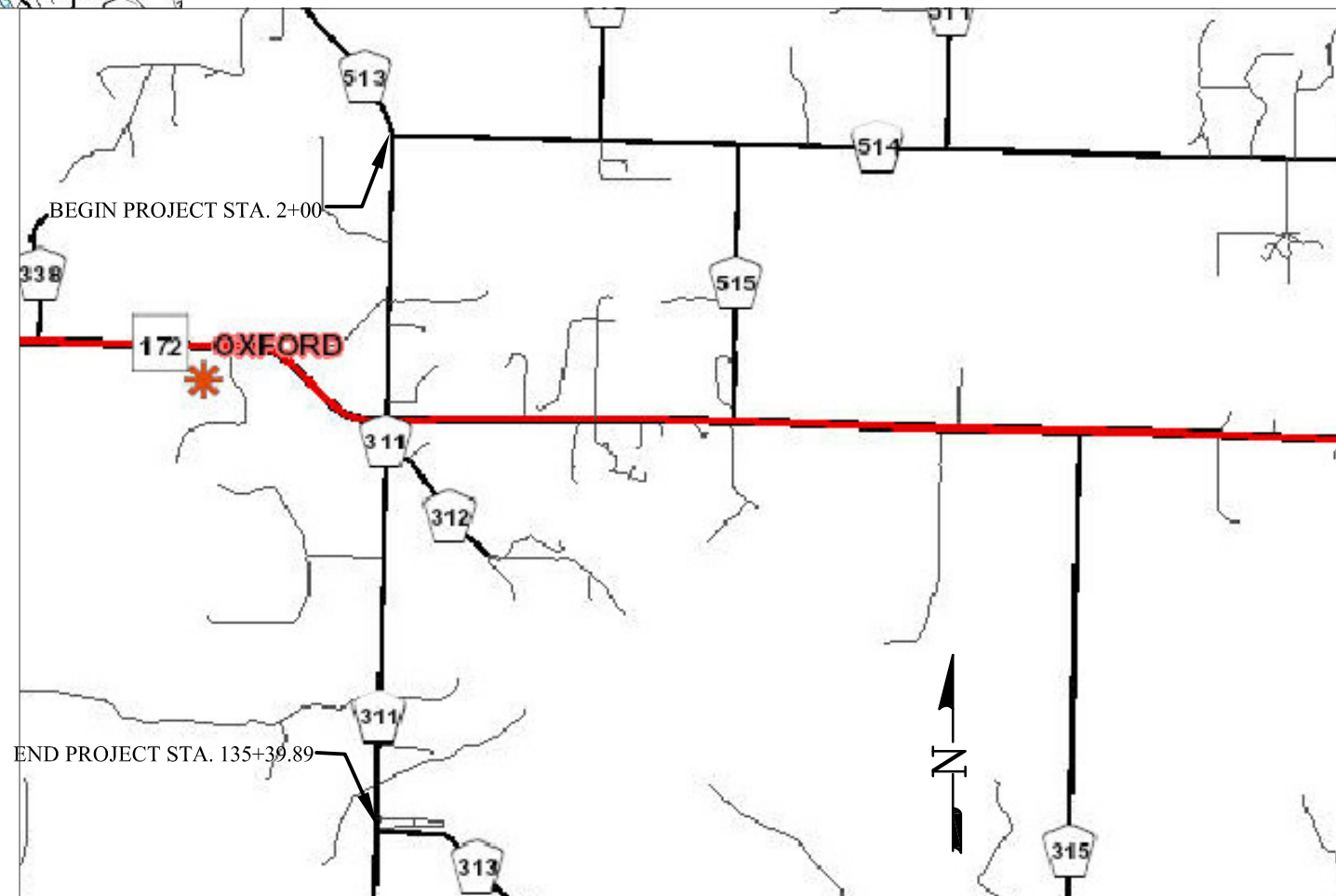
# LA PLATA ARCHULETA WATER DISTRICT WATER LINES PHASE 2B WATER PIPELINE

La Plata County, Colorado

### SHEET DESCRIPTION

1.....	PLAN AND PROFILE STA.	2+00 TO STA.	12+00
2.....	PLAN AND PROFILE STA.	12+00 TO STA.	22+00
3.....	PLAN AND PROFILE STA.	22+00 TO STA.	32+00
4.....	PLAN AND PROFILE STA.	32+00 TO STA.	42+00
5.....	PLAN AND PROFILE STA.	42+00 TO STA.	52+00
6.....	PLAN AND PROFILE STA.	52+00 TO STA.	62+00
7.....	PLAN AND PROFILE STA.	62+00 TO STA.	72+00
8.....	PLAN AND PROFILE STA.	72+00 TO STA.	82+00
9.....	PLAN AND PROFILE STA.	82+00 TO STA.	92+00
10.....	PLAN AND PROFILE STA.	92+00 TO STA.	102+00
11.....	PLAN AND PROFILE STA.	102+00 TO STA.	112+00
12.....	PLAN AND PROFILE STA.	112+00 TO STA.	122+00
13.....	PLAN AND PROFILE STA.	122+00 TO STA.	132+00
14.....	PLAN AND PROFILE STA.	132+00 TO STA.	135+39.89
15.....	SHEET LOCATIONS		

LOCATION MAP  
N.T.S.



VICINITY MAP N.T.S.



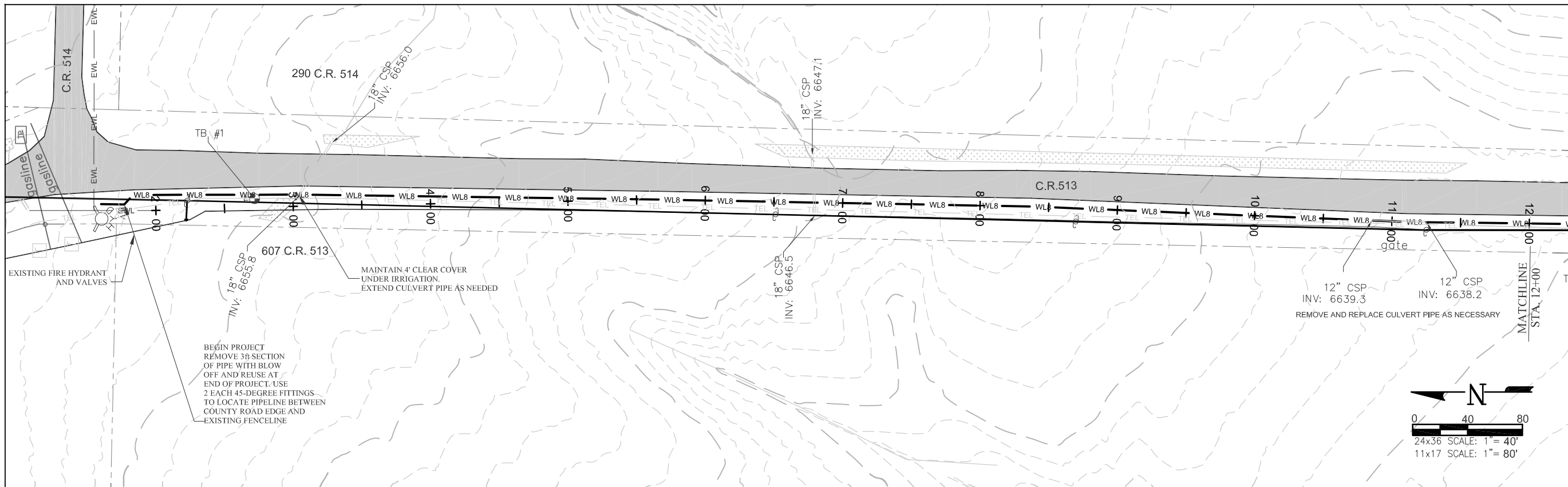
REVISION  
REV 1 - 4/24/2015

LA PLATA ARCHULETA WATER DISTRICT  
PHASE 2B WATER PIPELINE  
COVER SHEET

CALL UTILITY NOTIFICATION  
CENTER OF COLORADO  
1-800-922-1987 OR (811)  
CALL 3 BUSINESS DAYS PRIOR  
TO ANY CONSTRUCTION.

**HARRIS WATER  
ENGINEERING INC.**  
954 East Second Ave.  
Durango, Co. 81303  
970-259-1028

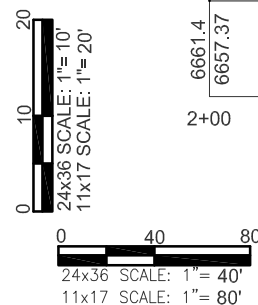
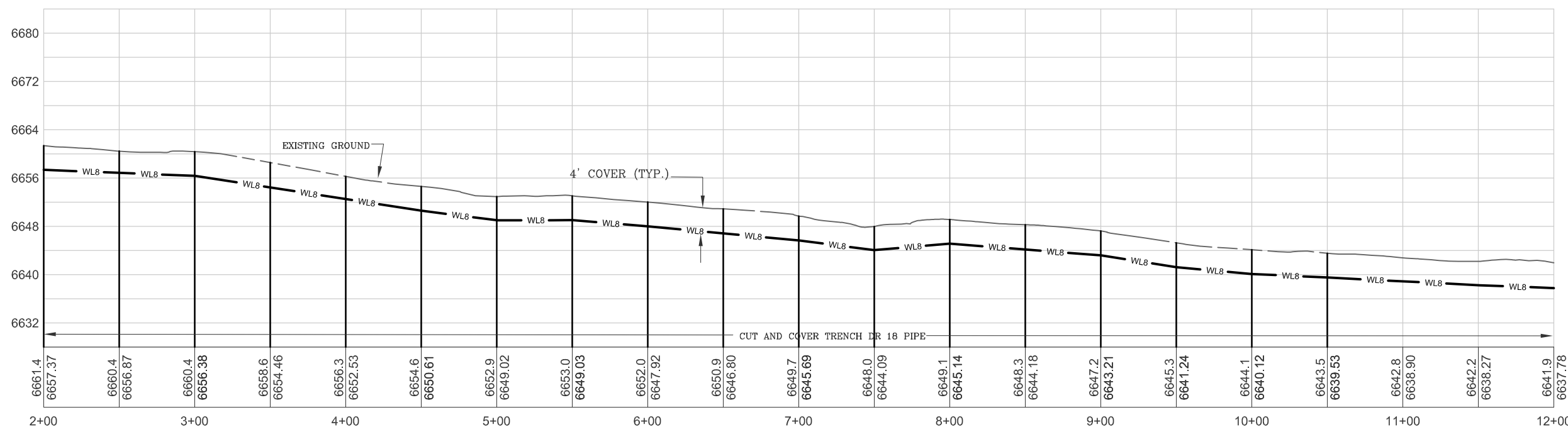
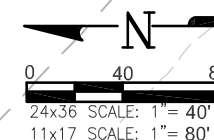
DATE: 03/17/2015  
DRAWN BY: BS  
CHECKED BY: BS  
SHEET  
00 OF 15



**KEY NOTES**  
 \*CONTRACTOR TO VERIFY TAP SIZE AND LOCATION PRIOR TO INSTALL AT ALL PLACEMENTS SHOWN. SERVICE TAP LOCATIONS, QUANTITIES AND SIZES ARE SUBJECT TO CHANGE.\*

**GENERAL NOTES**

- A ELEVATIONS SHOWN ARE APPROXIMATE AND MAY NOT BE ACCURATE AT TIME OF CONSTRUCTION.
- B STATIONING WILL BE SUBJECT TO ACTUAL FIELD CONDITIONS AND MAY VARY FROM THAT SHOWN.
- C CONTACT LPEA PRIOR TO WORK IF EXCAVATING WITHIN 5 FEET OF POWER POLES. MAINTAIN 5 FOOT SEPARATION BETWEEN POWER POLE AND WATERLINE.
- D ALL FITTINGS ARE STANDARD UNLESS NOTED OTHERWISE. HORIZONTAL BENDS NOT SHOWN ARE TO BE PROVIDED AT NO EXTRA COST.
- E PVI CHANGES MAY NOT REQUIRE FITTINGS. CHECK USABLE PIPE BEND RADIUS. USABLE PIPE BEND RADIUS NOT TO EXCEED 75% OF MANUFACTURERS RECOMMENDED ALLOWABLE.
- F ALL LEGS OF WATER LINES AT VALVES SHALL HAVE MECHANICAL JOINT RESTRAINT (MJR) IN THE FORM OF MEGALUG 2000 SERIES PV MJR.
- G CUTS WITHIN 4ft. OF EDGE OF ROAD TO BE FILLED TO WITHIN 8" OF TOP SURFACE. THEN MATCH LPC STANDARDS OF COMPACTED ROAD BASE WITH MAG CHLORIDE FOR TOP 8".
- H CUTS IN ROAD SURFACE SHALL BE FLOW FILLED TO WITHIN 8" OF TOP SURFACE. THEN MATCH LPC STANDARDS OF COMPACTED ROAD BASE WITH MAG CHLORIDE FOR TOP 8".



**LEGEND**

	WATER VALVE
	FENCE
	GUARD RAIL
	OVERHEAD POWERLINE
	GAS LINE
	UNDERGROUND TELEPHONE
	EXISTING WATERLINE
	UNDERGROUND ELECTRIC
	WETLANDS
	PROPOSED WATERLINE WITH SIZE SHOWN BY LINETYPE
	FIBER OPTIC MARKER
	TELEPHONE PEDESTAL
	POWER POLE
	TRAUTNER BORING HOLE WITH BORE NUMBER ABOVE

ELEVATIONS DERIVED FROM COUNTY GIS MAPS AND ARE FOR INFORMATIONAL PURPOSES ONLY. FIELD CONDITIONS MAY VARY.

REVISION  
 REV 1 - 4/24/2015

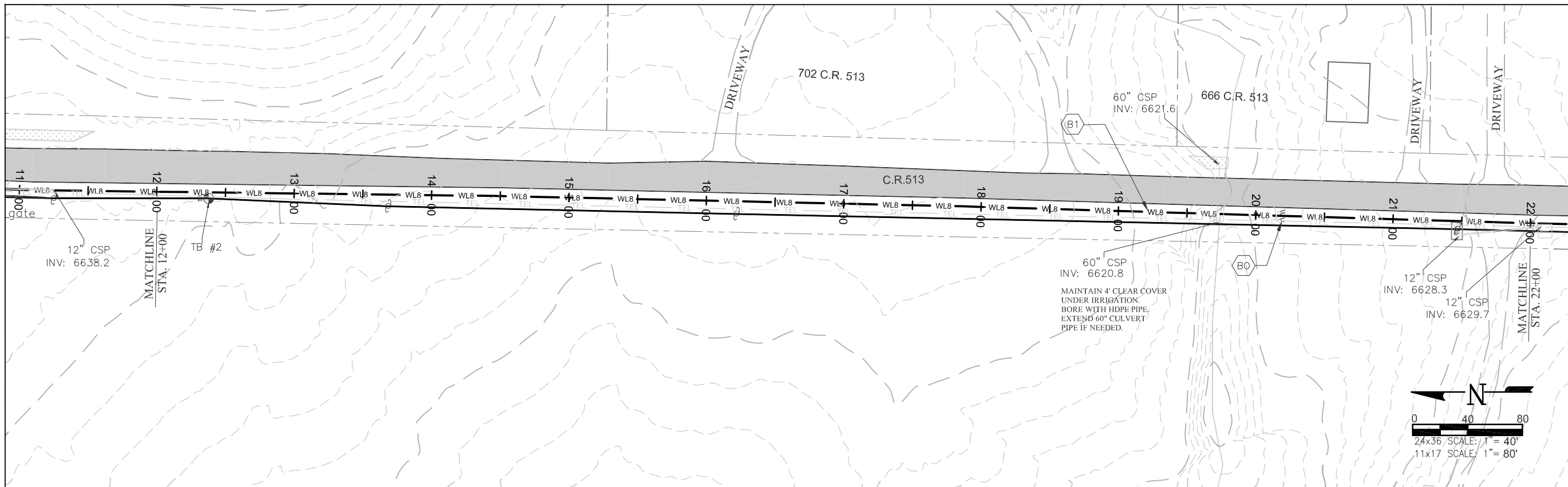


**LA PLATA ARCHULETA WATER DISTRICT  
 PHASE 2B WATER PIPELINE  
 PLAN AND PROFILE**

CALL UTILITY NOTIFICATION  
 CENTER OF COLORADO  
 1-800-922-1987 OR (811)  
 CALL 3 BUSINESS DAYS PRIOR  
 TO ANY CONSTRUCTION.

**HARRIS WATER  
 ENGINEERING INC.**  
 954 East Second Ave.  
 Durango, Co. 81303  
 970-259-1028

DATE: 03/17/2015  
 DRAWN BY: BS  
 CHECKED BY: BS  
 SHEET  
 01 OF 15



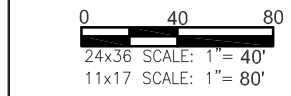
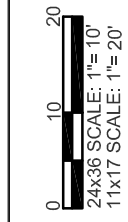
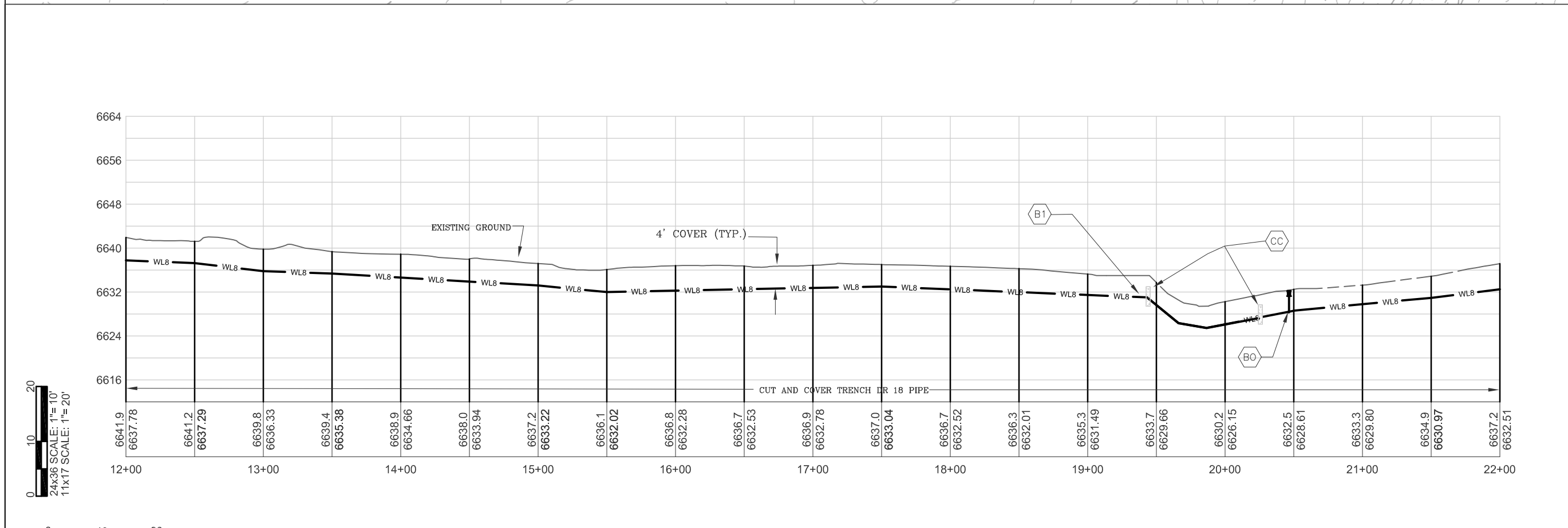
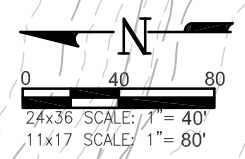
**KEY NOTES**

\*CONTRACTOR TO VERIFY TAP SIZE AND LOCATION PRIOR TO INSTALL AT ALL PLACEMENTS SHOWN. SERVICE TAP LOCATIONS, QUANTITIES AND SIZES ARE SUBJECT TO CHANGE.\*

- BO** INSTALL 2" TYPE B BLOWOFF PER STANDARD DETAILS SHEET 13.
- B1** BORE UNDER DITCH WITH HDPE (150 PSI MINIMUM RATING) INSTALL CONCRETE COLLARS AT TRANSITIONS TO AVOID SHRINKAGE. SEE STANDARDS
- CC** INSTALL CONCRETE COLLARS AT HDPE TO C900 TRANSITIONS. 1 CY CONCRETE MINIMUM.

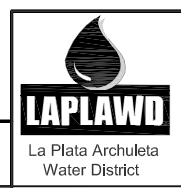
**GENERAL NOTES**

- A** ELEVATIONS SHOWN ARE APPROXIMATE AND MAY NOT BE ACCURATE AT TIME OF CONSTRUCTION.
- B** STATIONING WILL BE SUBJECT TO ACTUAL FIELD CONDITIONS AND MAY VARY FROM THAT SHOWN.
- C** CONTACT LPEA PRIOR TO WORK IF EXCAVATING WITHIN 5 FEET OF POWER POLES. MAINTAIN 5 FOOT SEPARATION BETWEEN POWER POLE AND WATERLINE.
- D** ALL FITTINGS ARE STANDARD UNLESS NOTED OTHERWISE. HORIZONTAL BENDS NOT SHOWN ARE TO BE PROVIDED AT NO EXTRA COST.
- E** PVI CHANGES MAY NOT REQUIRE FITTINGS. CHECK USABLE PIPE BEND RADIUS. USABLE PIPE BEND RADIUS NOT TO EXCEED 75% OF MANUFACTURERS RECOMMENDED ALLOWABLE.
- F** ALL LEGS OF WATER LINES AT VALVES SHALL HAVE MECHANICAL JOINT RESTRAINT (MJR) IN THE FORM OF MEGALUG 2000 SERIES PV MJR.
- G** CUTS WITHIN 4ft. OF EDGE OF ROAD TO BE FLOW FILLED TO WITHIN 6" OF TOP THEN 6" OF CLASS 6 AT 95% COMPACTION
- H** CUTS IN ROAD SURFACE SHALL BE FLOW FILLED TO WITHIN 8" OF TOP SURFACE. THEN MATCH LPC STANDARDS OF COMPACTED ROAD BASE WITH MAG CHLORIDE FOR TOP 8".



ELEVATIONS DERIVED FROM COUNTY GIS MAPS AND ARE FOR INFORMATIONAL PURPOSES ONLY. FIELD CONDITIONS MAY VARY.

REVISION  
REV 1 - 4/24/2015

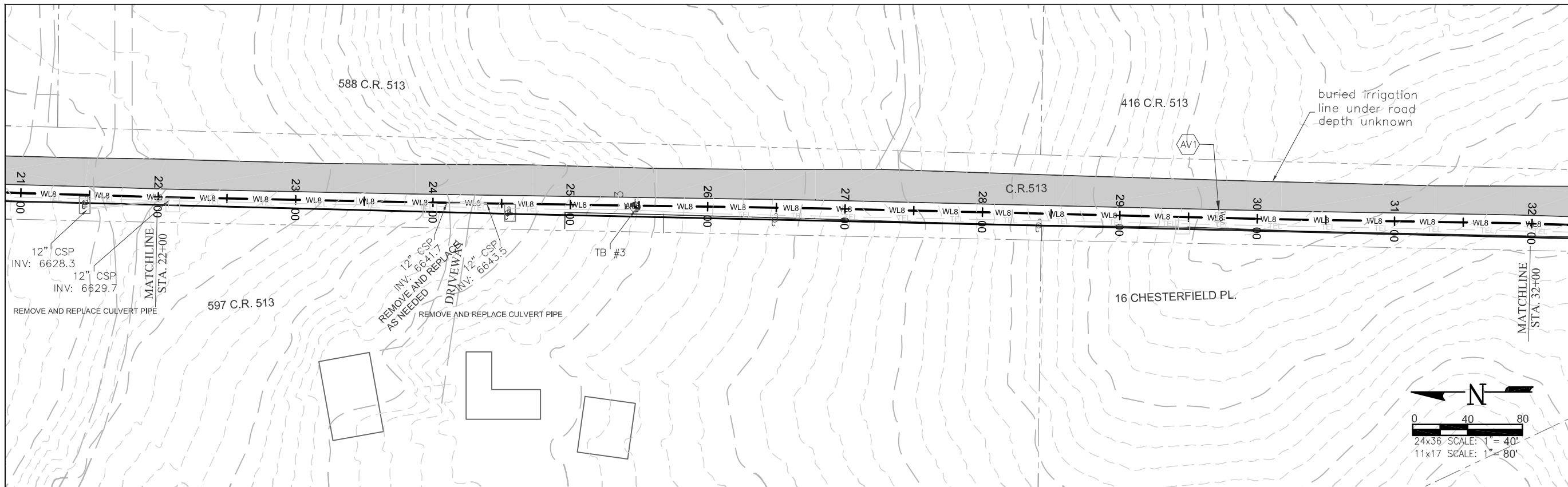


**LA PLATA ARCHULETA WATER DISTRICT  
PHASE 2B WATER PIPELINE  
PLAN AND PROFILE**

CALL UTILITY NOTIFICATION  
CENTER OF COLORADO  
1-800-922-1987 OR (811)  
CALL 3 BUSINESS DAYS PRIOR  
TO ANY CONSTRUCTION.

**HARRIS WATER  
ENGINEERING INC.**  
954 East Second Ave.  
Durango, Co. 81303  
970-259-1028

DATE: 03/17/2015  
DRAWN BY: BS  
CHECKED BY: BS  
SHEET  
02 OF 15



**KEY NOTES**

\*CONTRACTOR TO VERIFY TAP SIZE AND LOCATION PRIOR TO INSTALL AT ALL PLACEMENTS SHOWN. SERVICE TAP LOCATIONS, QUANTITIES AND SIZES ARE SUBJECT TO CHANGE.

(AV1) INSTALL AIR VAC AT HIGH POINT PER STANDARD DETAILS SHEET 11.

**GENERAL NOTES**

A ELEVATIONS SHOWN ARE APPROXIMATE AND MAY NOT BE ACCURATE AT TIME OF CONSTRUCTION.

B STATIONING WILL BE SUBJECT TO ACTUAL FIELD CONDITIONS AND MAY VARY FROM THAT SHOWN.

C CONTACT LPEA PRIOR TO WORK IF EXCAVATING WITHIN 5 FEET OF POWER POLES. MAINTAIN 5 FOOT SEPARATION BETWEEN POWER POLE AND WATERLINE.

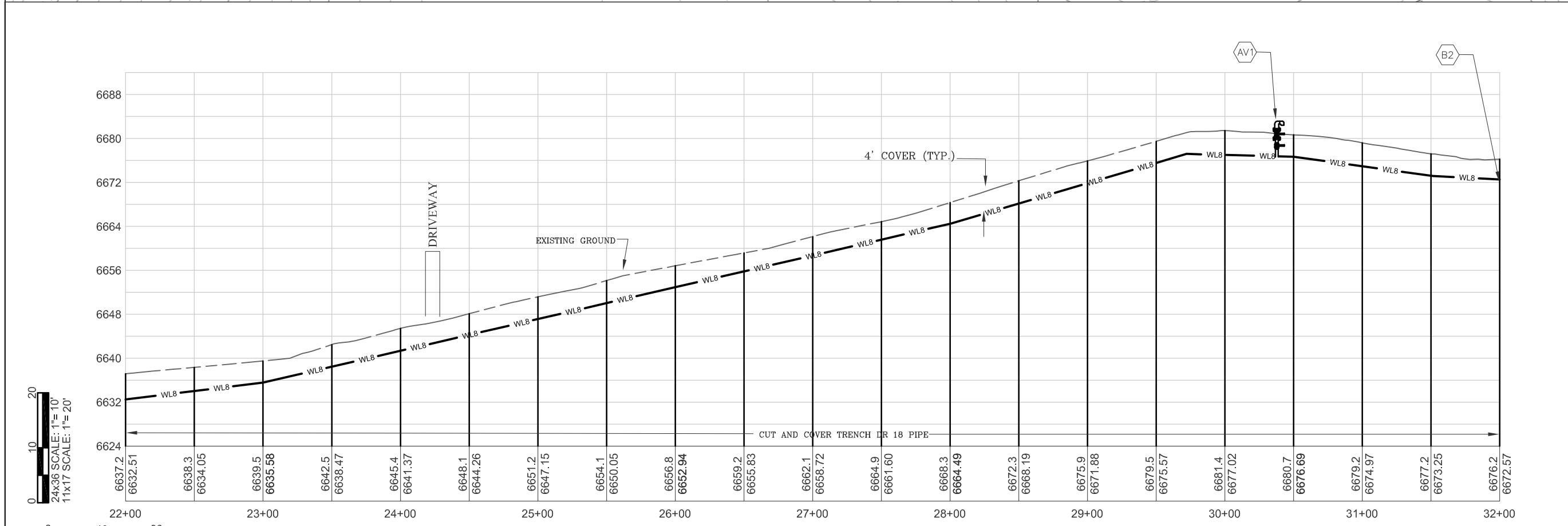
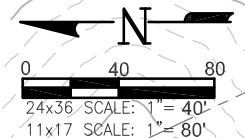
D ALL FITTINGS ARE STANDARD UNLESS NOTED OTHERWISE. HORIZONTAL BENDS NOT SHOWN ARE TO BE PROVIDED AT NO EXTRA COST.

E PVI CHANGES MAY NOT REQUIRE FITTINGS. CHECK USABLE PIPE BEND RADIUS. USABLE PIPE BEND RADIUS NOT TO EXCEED 75% OF MANUFACTURERS RECOMMENDED ALLOWABLE.

F ALL LEGS OF WATER LINES AT VALVES SHALL HAVE MECHANICAL JOINT RESTRAINT (MJR) IN THE FORM OF MEGALUG 2000 SERIES PV MJR.

G CUTS WITHIN 4ft. OF EDGE OF ROAD TO BE FLOW FILLED TO WITHIN 6" OF TOP THEN 6" OF CLASS 6 AT 95% COMPACTION

H CUTS IN ROAD SURFACE SHALL BE FLOW FILLED TO WITHIN 8" OF TOP SURFACE. THEN MATCH LPC STANDARDS OF COMPACTED ROAD BASE WITH MAG CHLORIDE FOR TOP 8".

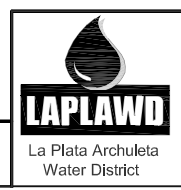


**LEGEND**

	WATER VALVE
	FENCE
	GUARD RAIL
	OVERHEAD POWERLINE
	GAS LINE
	UNDERGROUND TELEPHONE
	EXISTING WATERLINE
	UNDERGROUND ELECTRIC
	WETLANDS
	PROPOSED WATERLINE WITH SIZE SHOWN BY LINETYPE
	FIBER OPTIC MARKER
	TELEPHONE PEDESTAL
	POWER POLE
	TRAUTNER BORING HOLE WITH BORE NUMBER ABOVE

ELEVATIONS DERIVED FROM COUNTY GIS MAPS AND ARE FOR INFORMATIONAL PURPOSES ONLY. FIELD CONDITIONS MAY VARY.

REVISION  
REV 1 - 4/24/2015



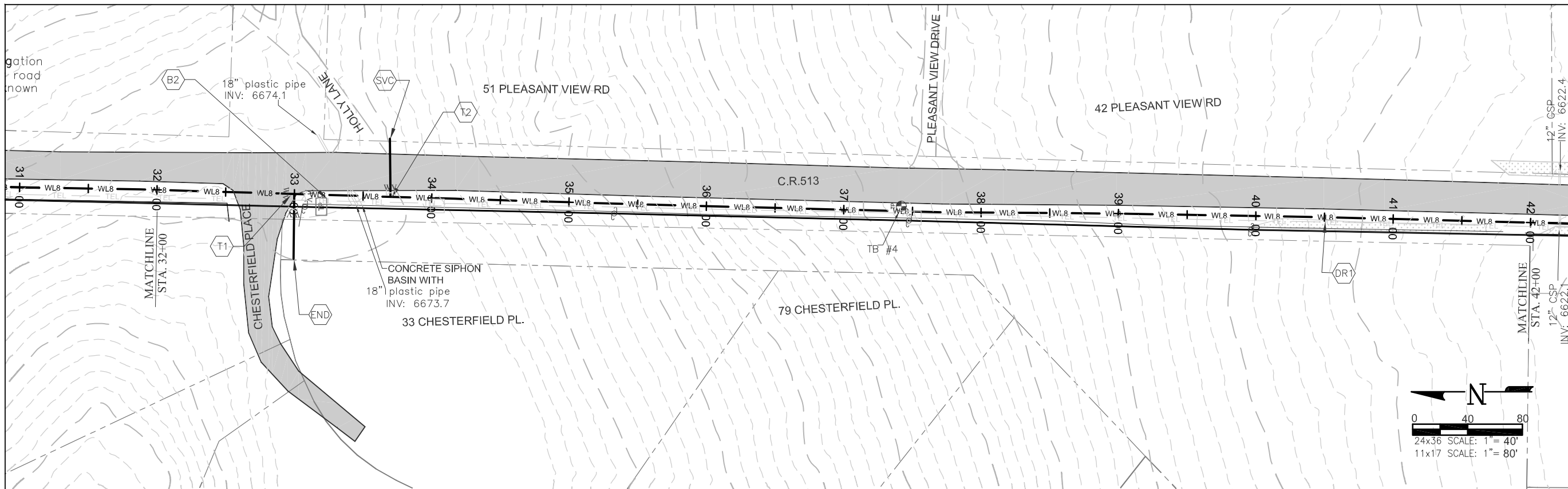
**LA PLATA ARCHULETA WATER DISTRICT  
PHASE 2B WATER PIPELINE  
PLAN AND PROFILE**

CALL UTILITY NOTIFICATION  
CENTER OF COLORADO  
1-800-922-1987 OR (811)  
CALL 3 BUSINESS DAYS PRIOR  
TO ANY CONSTRUCTION.

**HARRIS WATER  
ENGINEERING INC.**  
954 East Second Ave.  
Durango, Co. 81303  
970-259-1028

DATE: 03/17/2015  
DRAWN BY: MG  
CHECKED BY: BS  
SHEET  
03 OF 15





**KEY NOTES**

"CONTRACTOR TO VERIFY TAP SIZE AND LOCATION PRIOR TO INSTALL AT ALL PLACEMENTS SHOWN. SERVICE TAP LOCATIONS, QUANTITIES AND SIZES ARE SUBJECT TO CHANGE."

T1 8x8x4 TEE WITH 2- 8" VALVES AND 1-4" GATE VALVE PER STANDARD DETAILS SHEET 6.

T2 2" TAP SADDLE AND 2" WATER LINE BORE UNDER COUNTY ROAD 513 PER STANDARD DETAILS SHEET 10.

SVC

END INSTALL 3" PIPE AND BLOW-OFF TYPE "A" PER STANDARD DETAIL SHEET 13. INSTALL FIBERGLASS MARKER AT END OF LINE.

DR1 PIPE TRANSITION. ALL PIPE AT ELEVATIONS BELOW 6810.0' SHALL BE CLASS 225 (DR-14 FOR C-900 PVC).

B2 BEGIN BORE UNDER SIPHON LOCATE AND VERIFY IN FIELD

**GENERAL NOTES**

A ELEVATIONS SHOWN ARE APPROXIMATE AND MAY NOT BE ACCURATE AT TIME OF CONSTRUCTION.

B STATIONING WILL BE SUBJECT TO ACTUAL FIELD CONDITIONS AND MAY VARY FROM THAT SHOWN.

C CONTACT LPEA PRIOR TO WORK IF EXCAVATING WITHIN 5 FEET OF POWER POLES. MAINTAIN 5 FOOT SEPARATION BETWEEN POWER POLE AND WATERLINE.

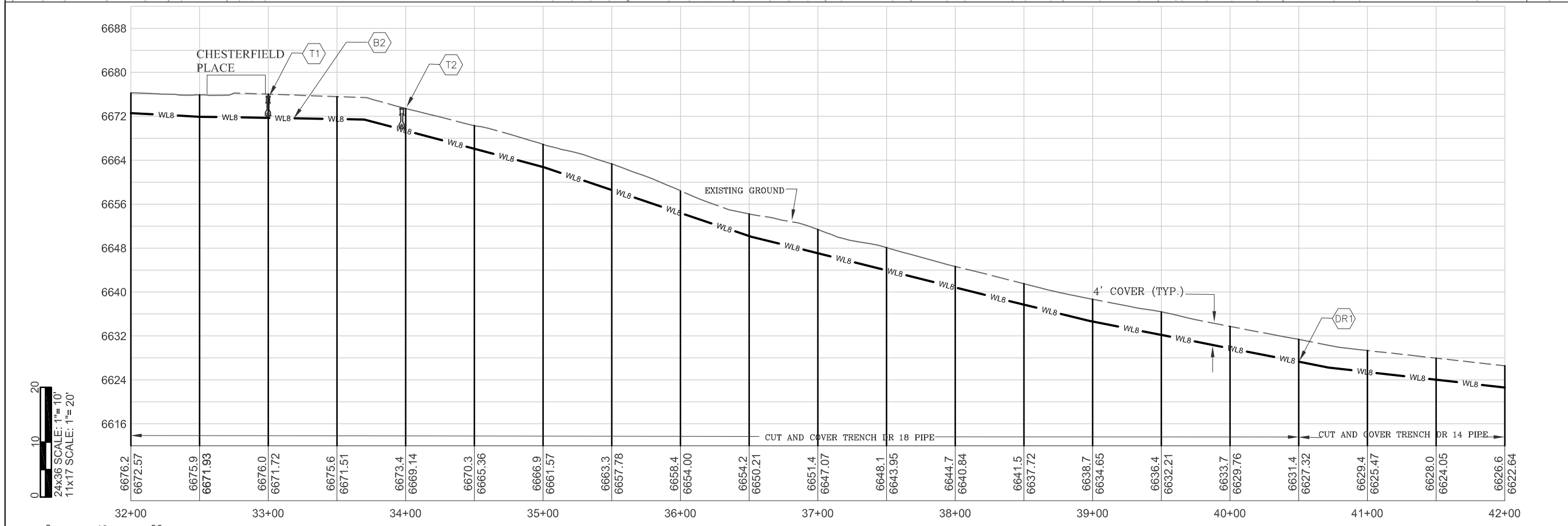
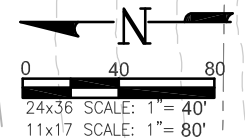
D ALL FITTINGS ARE STANDARD UNLESS NOTED OTHERWISE. HORIZONTAL BENDS NOT SHOWN ARE TO BE PROVIDED AT NO EXTRA COST.

E PVI CHANGES MAY NOT REQUIRE FITTINGS. CHECK USABLE PIPE BEND RADIUS. USABLE PIPE BEND RADIUS NOT TO EXCEED 75% OF MANUFACTURERS RECOMMENDED ALLOWABLE.

F ALL LEGS OF WATER LINES AT VALVES SHALL HAVE MECHANICAL JOINT RESTRAINT (MJR) IN THE FORM OF MEGALUG 2000 SERIES PV MJR.

G CUTS WITHIN 4ft. OF EDGE OF ROAD TO BE FLOW FILLED TO WITHIN 6" OF TOP THEN 6" OF CLASS 6 AT 95% COMPACTION

H CUTS IN ROAD SURFACE SHALL BE FLOW FILLED TO WITHIN 8" OF TOP SURFACE. THEN MATCH LPC STANDARDS OF COMPACTED ROAD BASE WITH MAG CHLORIDE FOR TOP 8".



**LEGEND**

WV WATER VALVE

FENCE

GUARD RAIL

OHE OVERHEAD POWERLINE

GAS GAS LINE

TEL UNDERGROUND TELEPHONE

EWL EXISTING WATERLINE

UNDERGROUND ELECTRIC

WETLANDS

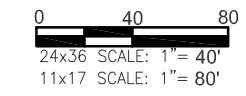
PROPOSED WATERLINE WITH SIZE SHOWN BY LINETYPE

FO FIBER OPTIC MARKER

TP TELEPHONE PEDESTAL

POWER POLE

TRAUTNER BORING HOLE WITH BORE NUMBER ABOVE



ELEVATIONS DERIVED FROM COUNTY GIS MAPS AND ARE FOR INFORMATIONAL PURPOSES ONLY. FIELD CONDITIONS MAY VARY.

REVISION  
REV 1 - 4/24/2015

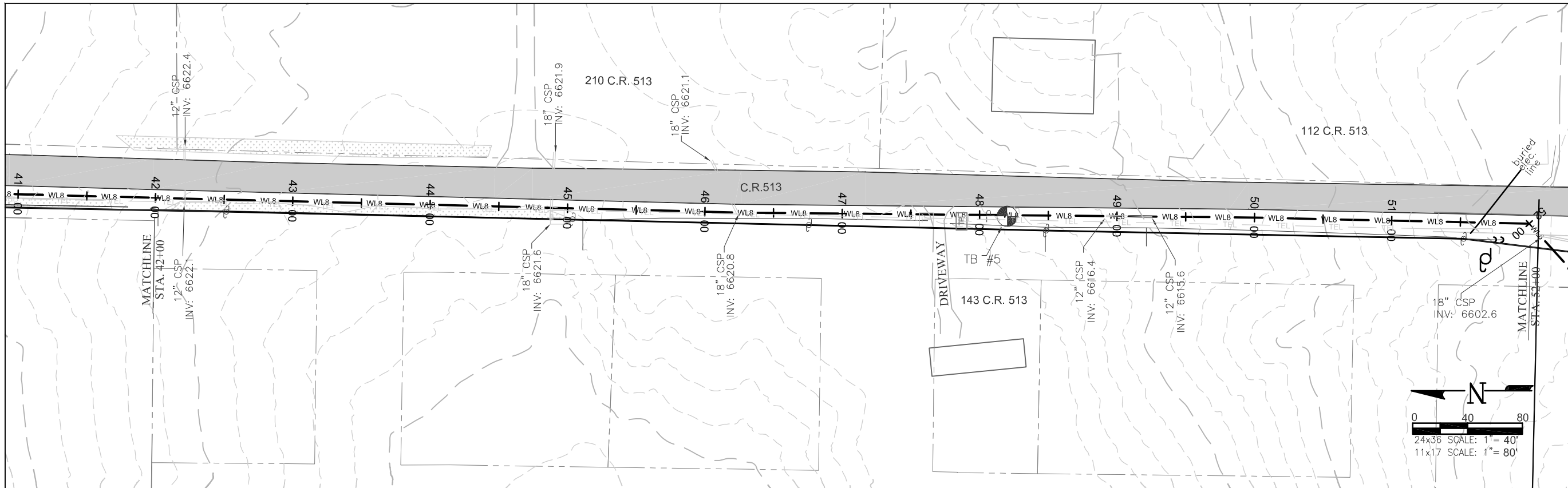


LA PLATA ARCHULETA WATER DISTRICT  
PHASE 2B WATER PIPELINE  
PLAN AND PROFILE

CALL UTILITY NOTIFICATION  
CENTER OF COLORADO  
1-800-922-1987 OR (811)  
CALL 3 BUSINESS DAYS PRIOR  
TO ANY CONSTRUCTION.

**HARRIS WATER ENGINEERING INC.**  
954 East Second Ave.  
Durango, Co. 81303  
970-259-1028

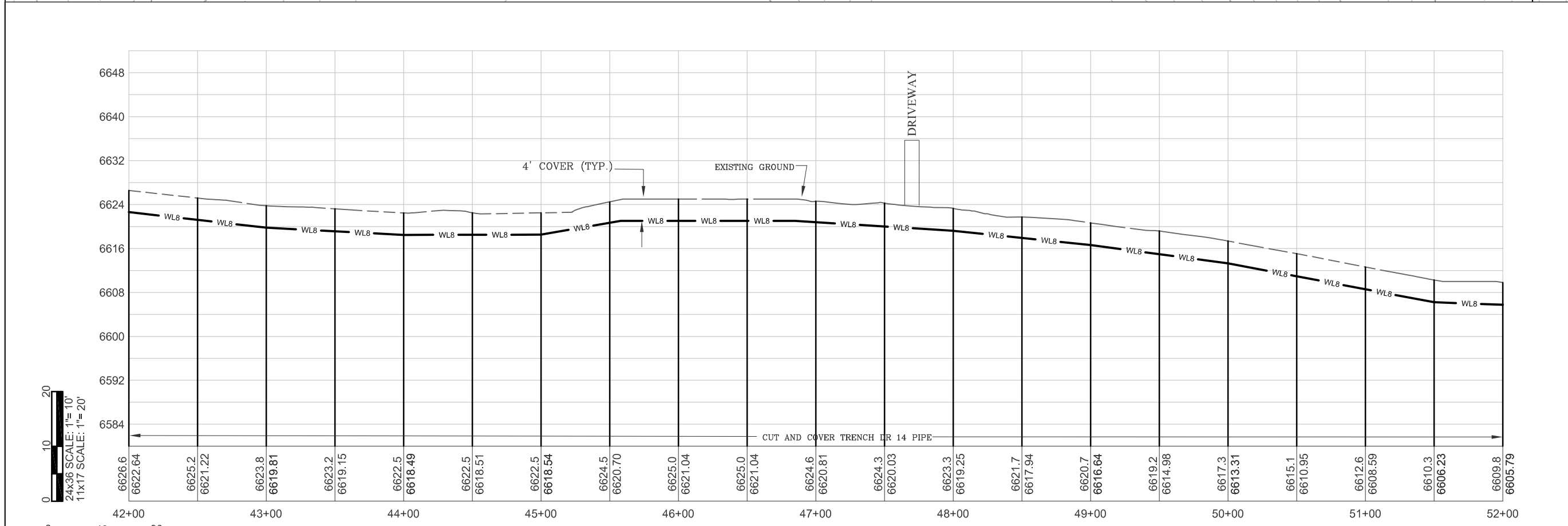
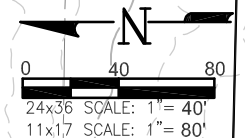
DATE: 03/17/2015  
DRAWN BY: BS  
CHECKED BY: BS  
SHEET  
04 OF 15



**KEY NOTES**  
 \*CONTRACTOR TO VERIFY TAP SIZE AND LOCATION PRIOR TO INSTALL AT ALL PLACEMENTS SHOWN. SERVICE TAP LOCATIONS, QUANTITIES AND SIZES ARE SUBJECT TO CHANGE.\*

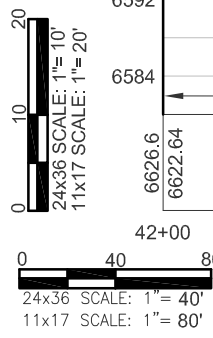
**GENERAL NOTES**

- A ELEVATIONS SHOWN ARE APPROXIMATE AND MAY NOT BE ACCURATE AT TIME OF CONSTRUCTION.
- B STATIONING WILL BE SUBJECT TO ACTUAL FIELD CONDITIONS AND MAY VARY FROM THAT SHOWN.
- C CONTACT LPEA PRIOR TO WORK IF EXCAVATING WITHIN 5 FEET OF POWER POLES. MAINTAIN 5 FOOT SEPARATION BETWEEN POWER POLE AND WATERLINE.
- D ALL FITTINGS ARE STANDARD UNLESS NOTED OTHERWISE. HORIZONTAL BENDS NOT SHOWN ARE TO BE PROVIDED AT NO EXTRA COST.
- E PVI CHANGES MAY NOT REQUIRE FITTINGS. CHECK USABLE PIPE BEND RADIUS. USABLE PIPE BEND RADIUS NOT TO EXCEED 75% OF MANUFACTURERS RECOMMENDED ALLOWABLE.
- F ALL LEGS OF WATER LINES AT VALVES SHALL HAVE MECHANICAL JOINT RESTRAINT (MJR) IN THE FORM OF MEGALUG 2000 SERIES PV MJR.
- G CUTS WITHIN 4ft. OF EDGE OF ROAD TO BE FLOW FILLED TO WITHIN 6" OF TOP THEN 6" OF CLASS 6 AT 95% COMPACTION
- H CUTS IN ROAD SURFACE SHALL BE FLOW FILLED TO WITHIN 8" OF TOP SURFACE. THEN MATCH LPC STANDARDS OF COMPACTED ROAD BASE WITH MAG CHLORIDE FOR TOP 8".



**LEGEND**

	WATER VALVE
	FENCE
	GUARD RAIL
	OVERHEAD POWERLINE
	GAS LINE
	UNDERGROUND TELEPHONE
	EXISTING WATERLINE
	UNDERGROUND ELECTRIC
	WETLANDS
	PROPOSED WATERLINE WITH SIZE SHOWN BY LINETYPE
	FIBER OPTIC MARKER
	TELEPHONE PEDESTAL
	POWER POLE
	TRAUTNER BORING HOLE WITH BORE NUMBER ABOVE



ELEVATIONS DERIVED FROM COUNTY GIS MAPS AND ARE FOR INFORMATIONAL PURPOSES ONLY. FIELD CONDITIONS MAY VARY.

REVISION  
 REV 1 - 4/24/2015

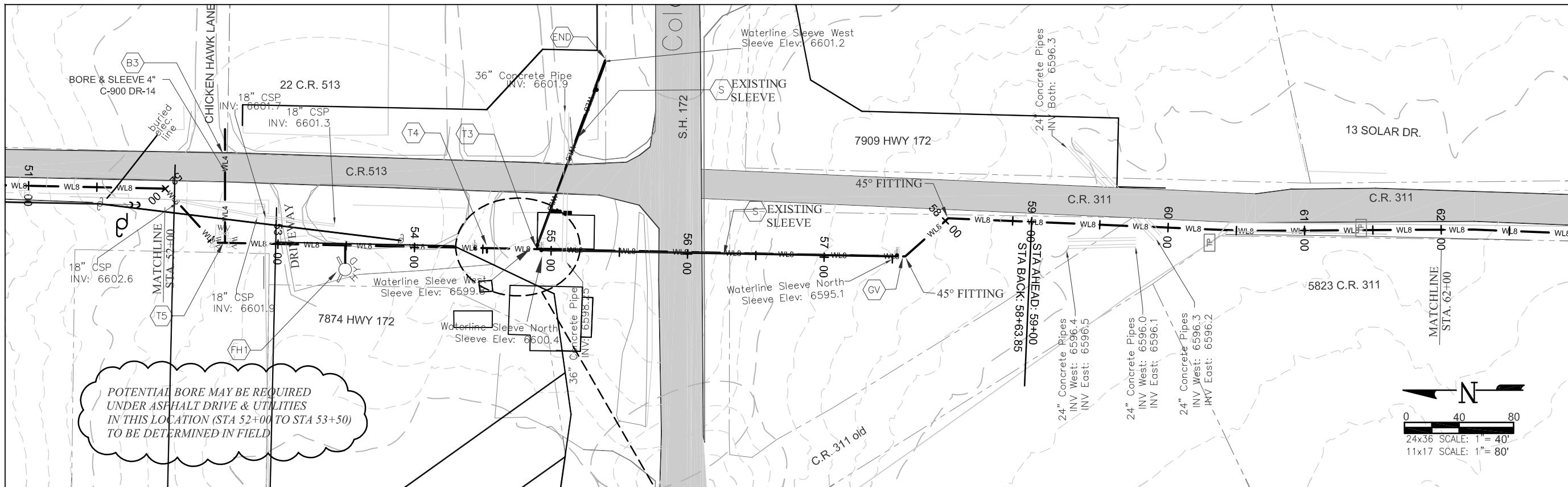


**LA PLATA ARCHULETA WATER DISTRICT  
 PHASE 2B WATER PIPELINE  
 PLAN AND PROFILE**

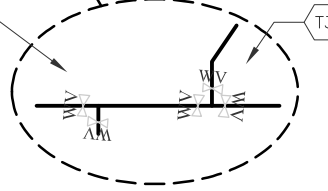
CALL UTILITY NOTIFICATION  
 CENTER OF COLORADO  
 1-800-922-1987 OR (811)  
 CALL 3 BUSINESS DAYS PRIOR  
 TO ANY CONSTRUCTION.

**HARRIS WATER  
 ENGINEERING INC.**  
 954 East Second Ave.  
 Durango, Co. 81303  
 970-259-1028

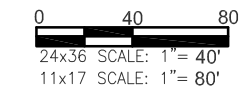
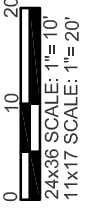
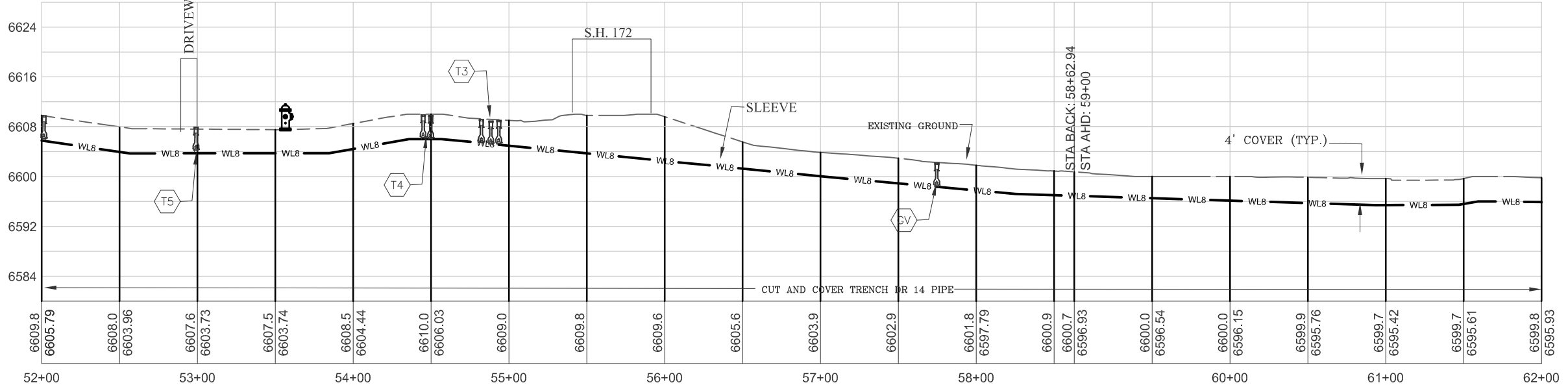
DATE: 03/17/2015  
 DRAWN BY: BS  
 CHECKED BY: BS  
 SHEET  
 05 OF 15



POTENTIAL BORE MAY BE REQUIRED UNDER ASPHALT DRIVE & UTILITIES IN THIS LOCATION (STA 52+00 TO STA 53+50) TO BE DETERMINED IN FIELD



**DETAIL SCHEMATIC**



ELEVATIONS DERIVED FROM COUNTY GIS MAPS AND ARE FOR INFORMATIONAL PURPOSES ONLY. FIELD CONDITIONS MAY VARY.

REVISION  
REV 1 - 4/24/2015



**LA PLATA ARCHULETA WATER DISTRICT  
PHASE 2B WATER PIPELINE  
PLAN AND PROFILE**

CALL UTILITY NOTIFICATION  
CENTER OF COLORADO  
1-800-922-1987 OR (811)  
CALL 3 BUSINESS DAYS PRIOR  
TO ANY CONSTRUCTION.

**HARRIS WATER  
ENGINEERING INC.**  
954 East Second Ave.  
Durango, Co. 81303  
970-259-1028

DATE: 03/17/2015  
DRAWN BY: BS  
CHECKED BY: BS  
SHEET  
06 OF 15

**KEY NOTES**

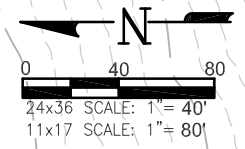
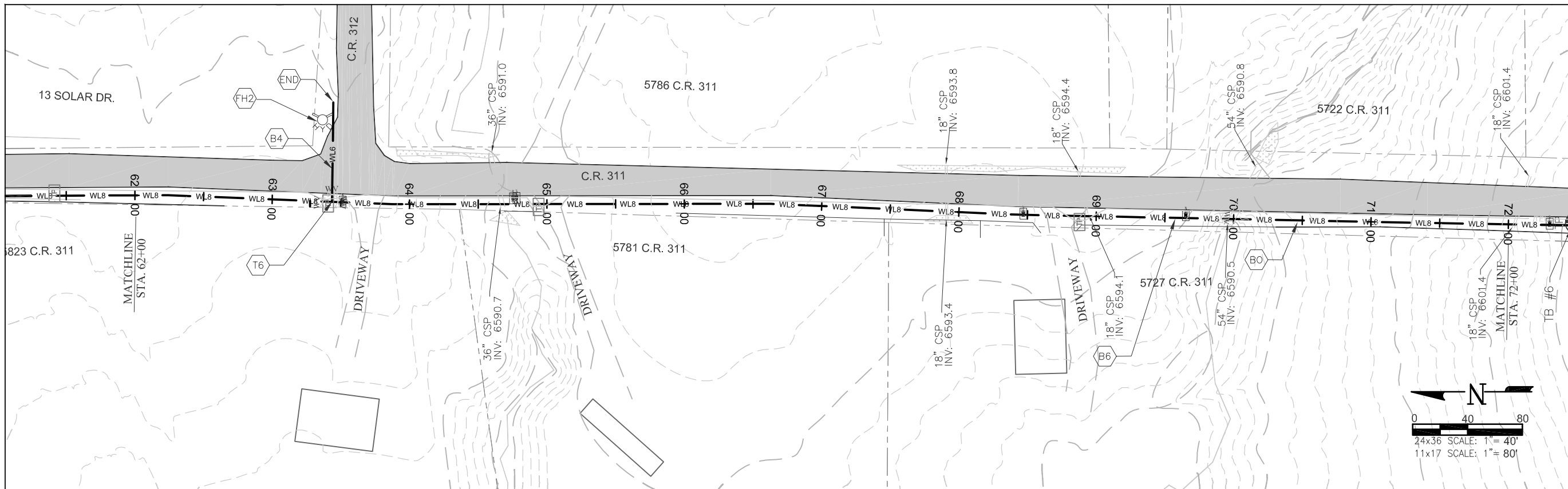
- "CONTRACTOR TO VERIFY TAP SIZE AND LOCATION PRIOR TO INSTALL AT ALL PLACEMENTS SHOWN. SERVICE TAP LOCATIONS, QUANTITIES AND SIZES ARE SUBJECT TO CHANGE."
- INSTALL 3" PIPE AND BLOW-OFF TYPE "A" PER STANDARD DETAIL SHEET 13, INSTALL FIBERGLASS MARKER AT END OF LINE.
- 8x8x8 TEE WITH 8" VALVES ON ALL LEGS PER STANDARD DETAILS SHEET 6.
- 8x8x8 TEE WITH 8" VALVE ON NORTH & WEST LEGS PER STANDARD DETAILS SHEET 6. SEE DETAIL SCHEMATIC.
- INSTALL 8" GATE VALVE PER STANDARD DETAILS SHEET 6.
- INSTALL 8" C900 DR14 PVC RESTRAINED JOINT IN EXISTING SLEEVES
- 8x4x8 T W/ 4" GATE VALVE, BORE AND SLEEVE UNDER CR 513. CAP AND MARK END OF 4" LINE.
- INSTALL FIRE HYDRANT PER STANDARD DETAILS.

**GENERAL NOTES**

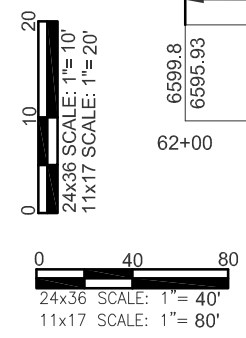
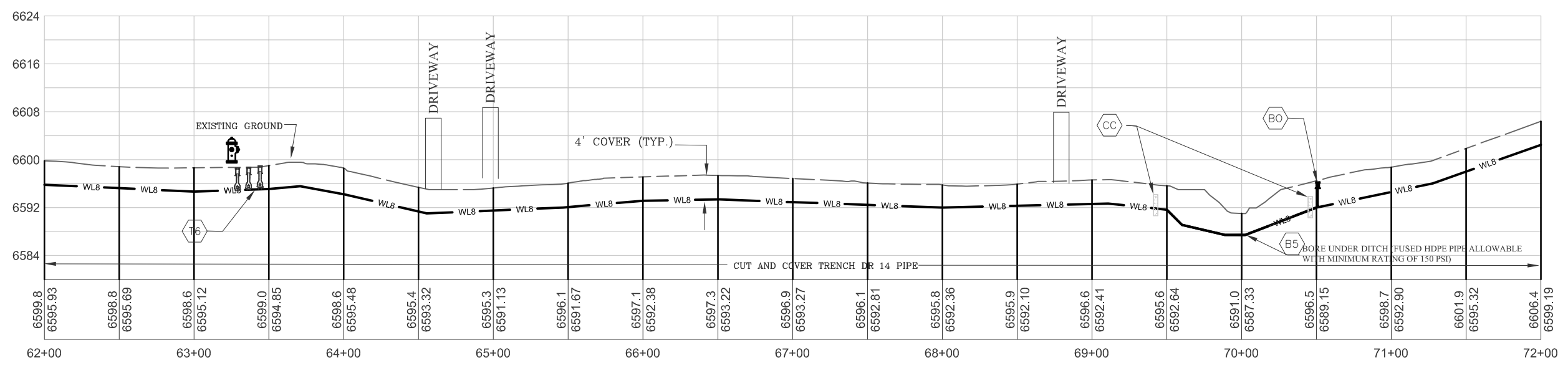
- A ELEVATIONS SHOWN ARE APPROXIMATE AND MAY NOT BE ACCURATE AT TIME OF CONSTRUCTION.
- B STATIONING WILL BE SUBJECT TO ACTUAL FIELD CONDITIONS AND MAY VARY FROM THAT SHOWN.
- C CONTACT LPEA PRIOR TO WORK IF EXCAVATING WITHIN 5 FEET OF POWER POLES. MAINTAIN 5 FOOT SEPARATION BETWEEN POWER POLE AND WATERLINE.
- D ALL FITTINGS ARE STANDARD UNLESS NOTED OTHERWISE. HORIZONTAL BENDS NOT SHOWN ARE TO BE PROVIDED AT NO EXTRA COST.
- E PVI CHANGES MAY NOT REQUIRE FITTINGS. CHECK USABLE PIPE BEND RADIUS. USABLE PIPE BEND RADIUS NOT TO EXCEED 75% OF MANUFACTURERS RECOMMENDED ALLOWABLE.
- F ALL LEGS OF WATER LINES AT VALVES SHALL HAVE MECHANICAL JOINT RESTRAINT (MJR) IN THE FORM OF MEGALUG 2000 SERIES PV MJR.
- G CUTS WITHIN 4ft. OF EDGE OF ROAD TO BE FLOW FILLED TO WITHIN 6" OF TOP THEN 6" OF CLASS 6 AT 95% COMPACTION
- H CUTS IN ROAD SURFACE SHALL BE FLOW FILLED TO WITHIN 8" OF TOP SURFACE. THEN MATCH LPC STANDARDS OF COMPACTED ROAD BASE WITH MAG CHLORIDE FOR TOP 8".

**LEGEND**

- WV WATER VALVE
- FENCE
- GUARD RAIL
- OHE OVERHEAD POWERLINE
- GAS GAS LINE
- TEL UNDERGROUND TELEPHONE
- EXISTING WATERLINE
- UNDERGROUND ELECTRIC
- WETLANDS
- PROPOSED WATERLINE WITH SIZE SHOWN BY LINETYPE
- FO FIBER OPTIC MARKER
- TP TELEPHONE PEDESTAL
- POWER POLE
- TRAUTNER BORING HOLE WITH BORE NUMBER ABOVE



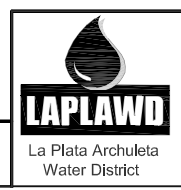
- KEY NOTES**
- \*CONTRACTOR TO VERIFY TAP SIZE AND LOCATION PRIOR TO INSTALL AT ALL PLACEMENTS SHOWN. SERVICE TAP LOCATIONS, QUANTITIES AND SIZES ARE SUBJECT TO CHANGE.\*
  - T6 8x8 TEE WITH GATE VALVES ON ALL LEGS PER STANDARD DETAILS SHEET 6.
  - END INSTALL 3" PIPE AND BLOW-OFF TYPE "A" PER STANDARD DETAIL SHEET 13. INSTALL FIBERGLASS MARKER AT END OF LINE.
  - B4 BORE 6" LINE UNDER COUNTY ROAD 311 AND SLEEVE PER STANDARD DETAILS SHEET 10.
  - FH2 INSTALL FIRE HYDRANT OFF 6" LINE 10 FEET FROM EDGE OF ROAD PER STANDARD DETAIL SHEET 8.
  - BO INSTALL 2" TYPE B BLOWOFF PER STANDARD DETAILS SHEET 13
  - B5 BORE UNDER DITCH WITH HDPE PIPE
  - CC INSTALL CONCRETE COLLARS AT HDPE C900 TRANSITIONS TO PREVENT SHRINKAGE. 1CY CONCRETE MINIMUM.
- GENERAL NOTES**
- A ELEVATIONS SHOWN ARE APPROXIMATE AND MAY NOT BE ACCURATE AT TIME OF CONSTRUCTION.
  - B STATIONING WILL BE SUBJECT TO ACTUAL FIELD CONDITIONS AND MAY VARY FROM THAT SHOWN.
  - C CONTACT LPEA PRIOR TO WORK IF EXCAVATING WITHIN 5 FEET OF POWER POLES. MAINTAIN 5 FOOT SEPARATION BETWEEN POWER POLE AND WATERLINE.
  - D ALL FITTINGS ARE STANDARD UNLESS NOTED OTHERWISE. HORIZONTAL BENDS NOT SHOWN ARE TO BE PROVIDED AT NO EXTRA COST.
  - E PVI CHANGES MAY NOT REQUIRE FITTINGS. CHECK USABLE PIPE BEND RADIUS. USABLE PIPE BEND RADIUS NOT TO EXCEED 75% OF MANUFACTURERS RECOMMENDED ALLOWABLE.
  - F ALL LEGS OF WATER LINES AT VALVES SHALL HAVE MECHANICAL JOINT RESTRAINT (MJR) IN THE FORM OF MEGALUG 2000 SERIES PV MJR.
  - G CUTS WITHIN 4ft. OF EDGE OF ROAD TO BE FLOW FILLED TO WITHIN 6" OF TOP THEN 6" OF CLASS 6 AT 95% COMPACTION
  - H CUTS IN ROAD SURFACE SHALL BE FLOW FILLED TO WITHIN 8" OF TOP SURFACE. THEN MATCH LPC STANDARDS OF COMPACTED ROAD BASE WITH MAG CHLORIDE FOR TOP 8".



- LEGEND**
- WV WATER VALVE
  - FENCE
  - GUARD RAIL
  - OHE OVERHEAD POWERLINE
  - GAS GAS LINE
  - TEL UNDERGROUND TELEPHONE
  - EXISTING WATERLINE
  - UNDERGROUND ELECTRIC
  - WETLANDS
  - PROPOSED WATERLINE WITH SIZE SHOWN BY LINETYPE
  - FO FIBER OPTIC MARKER
  - TP TELEPHONE PEDESTAL
  - POWER POLE
  - TRAUTNER BORING HOLE WITH BORE NUMBER ABOVE

ELEVATIONS DERIVED FROM COUNTY GIS MAPS AND ARE FOR INFORMATIONAL PURPOSES ONLY. FIELD CONDITIONS MAY VARY.

REVISION  
REV 1 - 4/24/2015



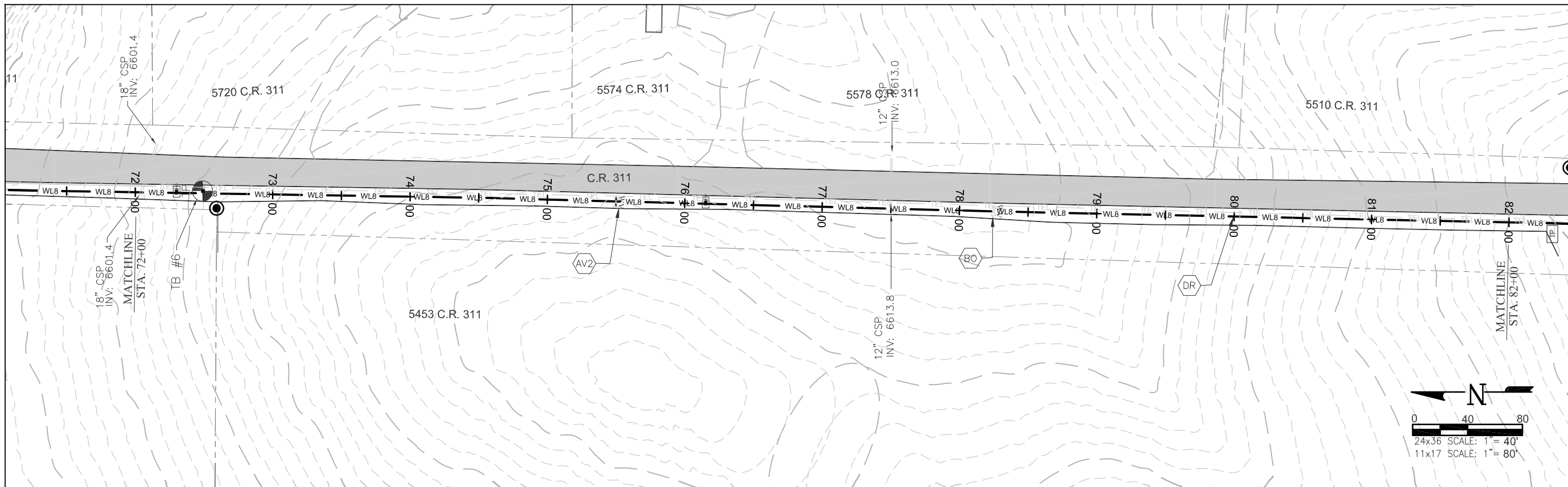
LA PLATA ARCHULETA WATER DISTRICT  
PHASE 2B WATER PIPELINE  
PLAN AND PROFILE

CALL UTILITY NOTIFICATION  
CENTER OF COLORADO  
1-800-922-1987 OR (811)  
CALL 3 BUSINESS DAYS PRIOR  
TO ANY CONSTRUCTION.

**HARRIS WATER ENGINEERING INC.**  
954 East Second Ave.  
Durango, Co. 81303  
970-259-1028

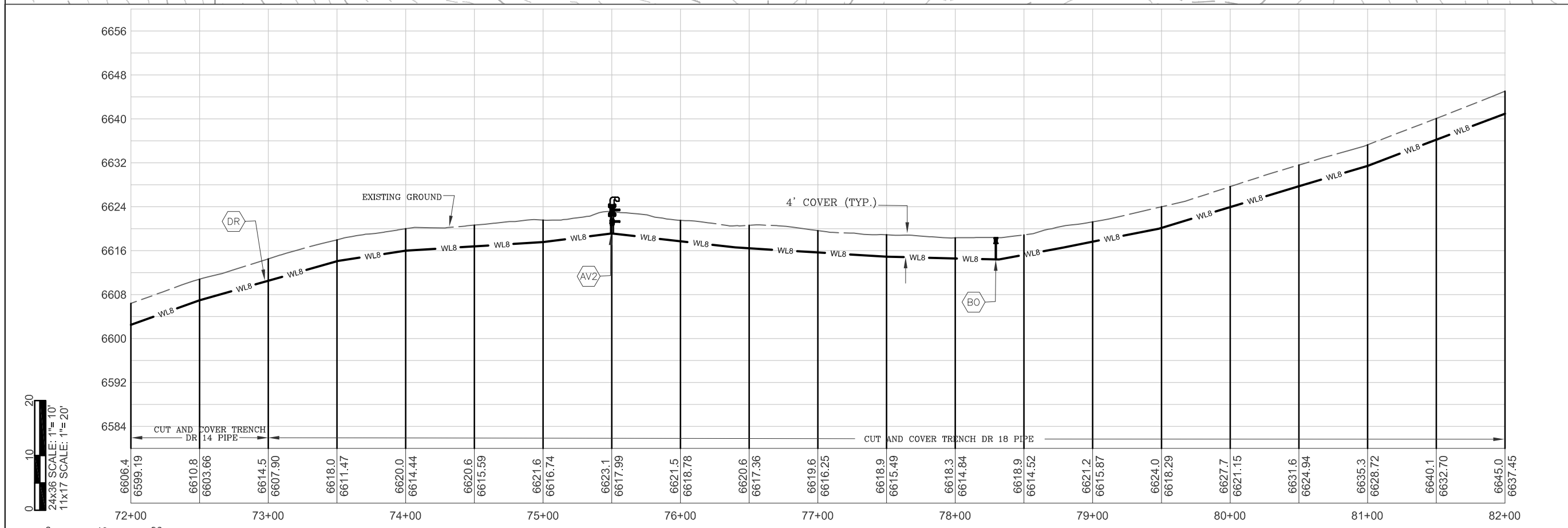
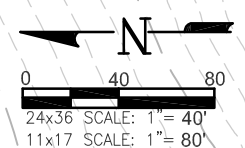
DATE: 03/17/2015  
DRAWN BY: BS  
CHECKED BY: BS  
SHEET  
07 OF 15



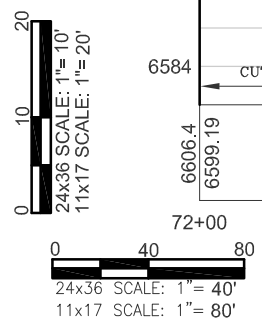


- KEY NOTES**
- \*CONTRACTOR TO VERIFY TAP SIZE AND LOCATION PRIOR TO INSTALL AT ALL PLACEMENTS SHOWN. SERVICE TAP LOCATIONS, QUANTITIES AND SIZES ARE SUBJECT TO CHANGE.\*
  - AV2 INSTALL AIR VAC AT HIGH POINT PER STANDARD DETAILS SHEET 11.
  - BO INSTALL 2" TYPE B BLOWOFF PER STANDARD DETAILS SHEET 13.
  - DR PIPE TRANSITION, ALL PIPE AT ELEVATIONS BELOW 6810.0' SHALL BE CLASS 225 (DR-14 FOR C-900 PVC).

- GENERAL NOTES**
- A ELEVATIONS SHOWN ARE APPROXIMATE AND MAY NOT BE ACCURATE AT TIME OF CONSTRUCTION.
  - B STATIONING WILL BE SUBJECT TO ACTUAL FIELD CONDITIONS AND MAY VARY FROM THAT SHOWN.
  - C CONTACT LPEA PRIOR TO WORK IF EXCAVATING WITHIN 5 FEET OF POWER POLES. MAINTAIN 5 FOOT SEPARATION BETWEEN POWER POLE AND WATERLINE.
  - D ALL FITTINGS ARE STANDARD UNLESS NOTED OTHERWISE. HORIZONTAL BENDS NOT SHOWN ARE TO BE PROVIDED AT NO EXTRA COST.
  - E PVI CHANGES MAY NOT REQUIRE FITTINGS. CHECK USABLE PIPE BEND RADIUS. USABLE PIPE BEND RADIUS NOT TO EXCEED 75% OF MANUFACTURERS RECOMMENDED ALLOWABLE.
  - F ALL LEGS OF WATER LINES AT VALVES SHALL HAVE MECHANICAL JOINT RESTRAINT (MJR) IN THE FORM OF MEGALUG 2000 SERIES PV MJR.
  - G CUTS WITHIN 4ft. OF EDGE OF ROAD TO BE FLOW FILLED TO WITHIN 6" OF TOP THEN 6" OF CLASS 6 AT 95% COMPACTION
  - H CUTS IN ROAD SURFACE SHALL BE FLOW FILLED TO WITHIN 8" OF TOP SURFACE. THEN MATCH LPC STANDARDS OF COMPACTED ROAD BASE WITH MAG CHLORIDE FOR TOP 8".



- LEGEND**
- WV WATER VALVE
  - FENCE
  - GUARD RAIL
  - OHE OVERHEAD POWERLINE
  - GAS GAS LINE
  - TEL UNDERGROUND TELEPHONE
  - EXISTL EXISTING WATERLINE
  - UNDERGROUND ELECTRIC
  - WETLANDS
  - PROPOSED WATERLINE WITH SIZE SHOWN BY LINETYPE
  - FO FIBER OPTIC MARKER
  - TP TELEPHONE PEDESTAL
  - POWER POLE
  - TRAUTNER BORING HOLE WITH BORE NUMBER ABOVE



ELEVATIONS DERIVED FROM COUNTY GIS MAPS AND ARE FOR INFORMATIONAL PURPOSES ONLY. FIELD CONDITIONS MAY VARY.

REVISION  
REV 1 - 4/24/2015

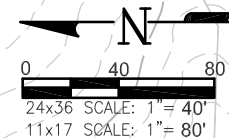
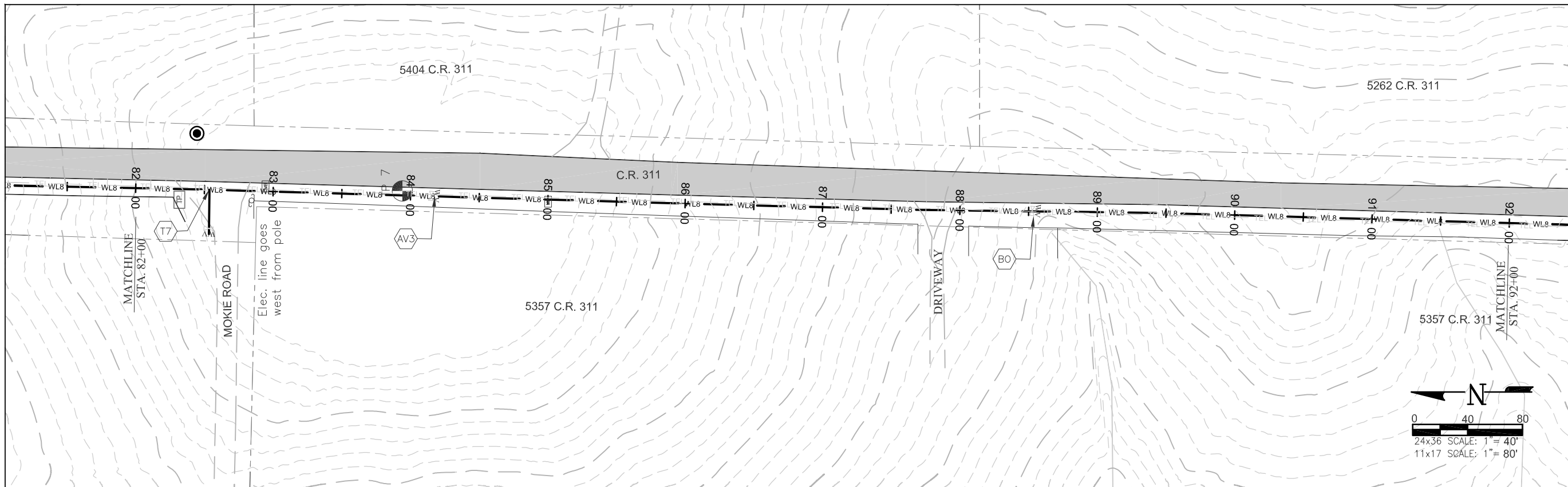


**LA PLATA ARCHULETA WATER DISTRICT  
PHASE 2B WATER PIPELINE  
PLAN AND PROFILE**

CALL UTILITY NOTIFICATION  
CENTER OF COLORADO  
1-800-922-1987 OR (811)  
CALL 3 BUSINESS DAYS PRIOR  
TO ANY CONSTRUCTION.

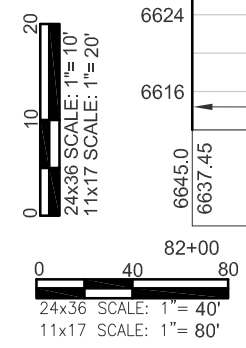
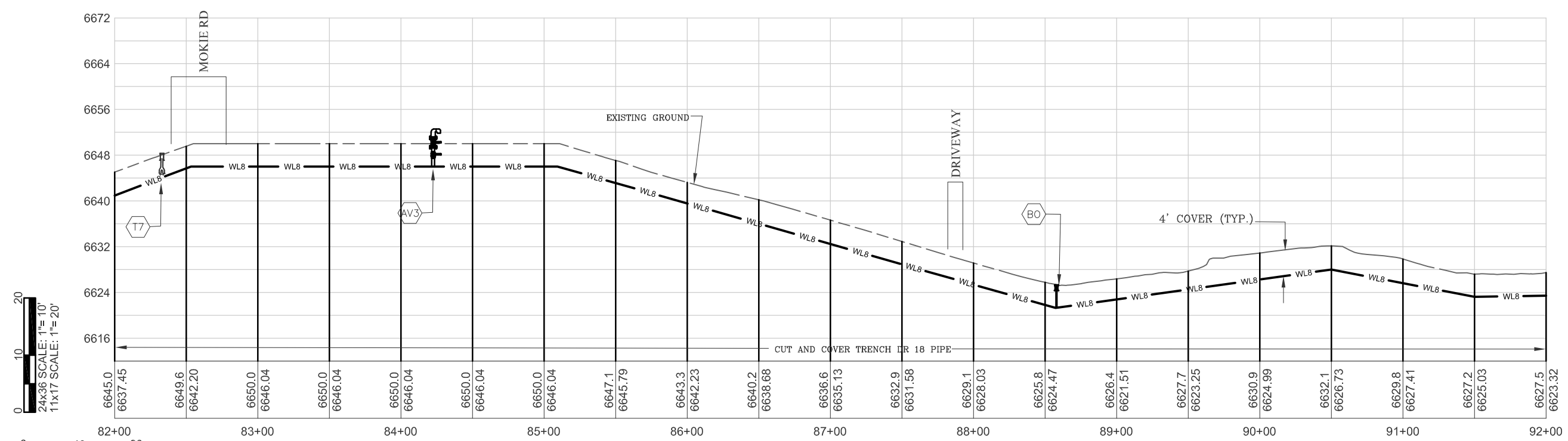
**HARRIS WATER  
ENGINEERING INC.**  
954 East Second Ave.  
Durango, Co. 81303  
970-259-1028

DATE: 03/17/2015  
DRAWN BY: BS  
CHECKED BY: BS  
SHEET  
08 OF 15



- KEY NOTES**
- "CONTRACTOR TO VERIFY TAP SIZE AND LOCATION PRIOR TO INSTALL AT ALL PLACEMENTS SHOWN. SERVICE TAP LOCATIONS, QUANTITIES AND SIZES ARE SUBJECT TO CHANGE."
  - AV3 INSTALL AIR VAC AT HIGH POINT PER STANDARD DETAILS SHEET 11.
  - T7 2" TAP SADDLE AND GATE VALVE
  - BO INSTALL 2" TYPE B BLOWOFF PER STANDARD DETAILS SHEET 13.

- GENERAL NOTES**
- A ELEVATIONS SHOWN ARE APPROXIMATE AND MAY NOT BE ACCURATE AT TIME OF CONSTRUCTION.
  - B STATIONING WILL BE SUBJECT TO ACTUAL FIELD CONDITIONS AND MAY VARY FROM THAT SHOWN.
  - C CONTACT LPEA PRIOR TO WORK IF EXCAVATING WITHIN 5 FEET OF POWER POLES. MAINTAIN 5 FOOT SEPARATION BETWEEN POWER POLE AND WATERLINE.
  - D ALL FITTINGS ARE STANDARD UNLESS NOTED OTHERWISE. HORIZONTAL BENDS NOT SHOWN ARE TO BE PROVIDED AT NO EXTRA COST.
  - E PVI CHANGES MAY NOT REQUIRE FITTINGS. CHECK USABLE PIPE BEND RADIUS. USABLE PIPE BEND RADIUS NOT TO EXCEED 75% OF MANUFACTURERS RECOMMENDED ALLOWABLE.
  - F ALL LEGS OF WATER LINES AT VALVES SHALL HAVE MECHANICAL JOINT RESTRAINT (MJR) IN THE FORM OF MEGALUG 2000 SERIES PV MJR.
  - G CUTS WITHIN 4ft. OF EDGE OF ROAD TO BE FLOW FILLED TO WITHIN 6" OF TOP THEN 6" OF CLASS 6 AT 95% COMPACTION
  - H CUTS IN ROAD SURFACE SHALL BE FLOW FILLED TO WITHIN 8" OF TOP SURFACE. THEN MATCH LPC STANDARDS OF COMPACTION ROAD BASE WITH MAG CHLORIDE FOR TOP 8".



- LEGEND**
- WV WATER VALVE
  - FENCE
  - GUARD RAIL
  - OHE OVERHEAD POWERLINE
  - GAS GAS LINE
  - TEL UNDERGROUND TELEPHONE
  - TEL UNDERGROUND TELEPHONE
  - EWL EXISTING WATERLINE
  - EWL UNDERGROUND ELECTRIC
  - WETLANDS
  - PROPOSED WATERLINE WITH SIZE SHOWN BY LINETYPE
  - FO FIBER OPTIC MARKER
  - TP TELEPHONE PEDESTAL
  - POWER POLE
  - TRAUTNER BORING HOLE WITH BORE NUMBER ABOVE

ELEVATIONS DERIVED FROM COUNTY GIS MAPS AND ARE FOR INFORMATIONAL PURPOSES ONLY. FIELD CONDITIONS MAY VARY.

REVISION  
REV 1 - 4/24/2015

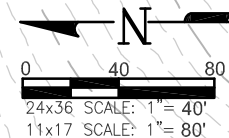
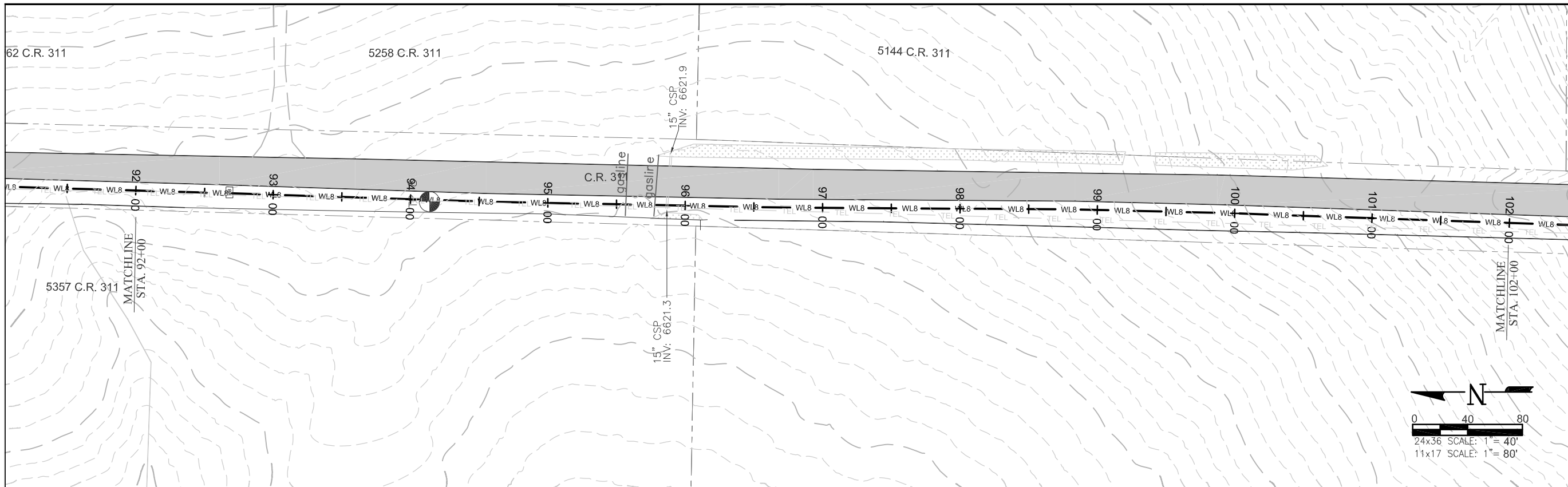


**LA PLATA ARCHULETA WATER DISTRICT  
PHASE 2B WATER PIPELINE  
PLAN AND PROFILE**

CALL UTILITY NOTIFICATION  
CENTER OF COLORADO  
1-800-922-1987 OR (811)  
CALL 3 BUSINESS DAYS PRIOR  
TO ANY CONSTRUCTION.

**HARRIS WATER  
ENGINEERING INC.**  
954 East Second Ave.  
Durango, Co. 81303  
970-259-1028

DATE: 03/17/2015  
DRAWN BY: BS  
CHECKED BY: BS  
SHEET  
09 OF 15

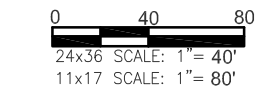
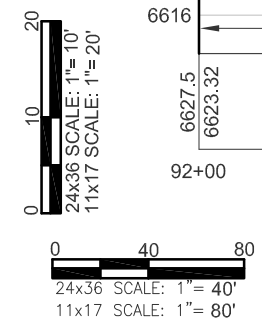
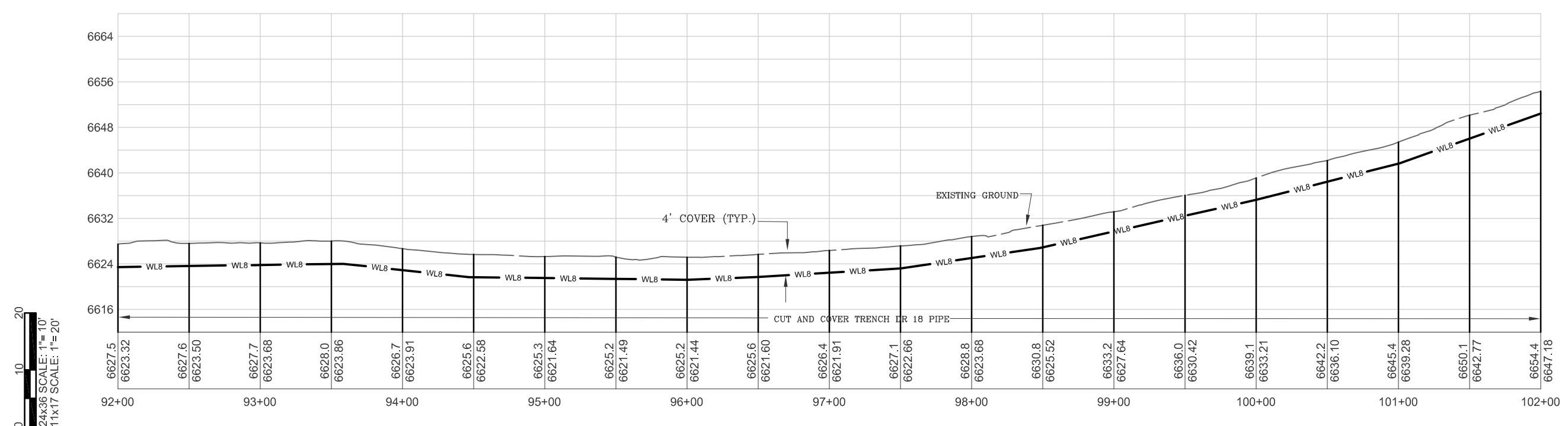
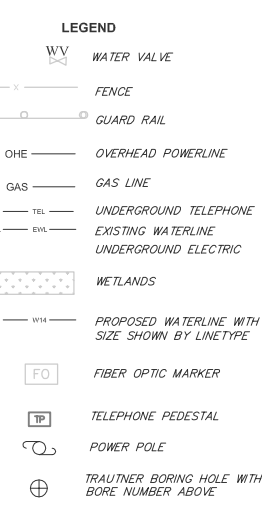


**KEY NOTES**

"CONTRACTOR TO VERIFY TAP SIZE AND LOCATION PRIOR TO INSTALL AT ALL PLACEMENTS SHOWN. SERVICE TAP LOCATIONS, QUANTITIES AND SIZES ARE SUBJECT TO CHANGE."

**GENERAL NOTES**

- A ELEVATIONS SHOWN ARE APPROXIMATE AND MAY NOT BE ACCURATE AT TIME OF CONSTRUCTION.
- B STATIONING WILL BE SUBJECT TO ACTUAL FIELD CONDITIONS AND MAY VARY FROM THAT SHOWN.
- C CONTACT LPEA PRIOR TO WORK IF EXCAVATING WITHIN 5 FEET OF POWER POLES. MAINTAIN 5 FOOT SEPARATION BETWEEN POWER POLE AND WATERLINE.
- D ALL FITTINGS ARE STANDARD UNLESS NOTED OTHERWISE. HORIZONTAL BENDS NOT SHOWN ARE TO BE PROVIDED AT NO EXTRA COST.
- E PVI CHANGES MAY NOT REQUIRE FITTINGS. CHECK USABLE PIPE BEND RADIUS. USABLE PIPE BEND RADIUS NOT TO EXCEED 75% OF MANUFACTURERS RECOMMENDED ALLOWABLE.
- F ALL LEGS OF WATER LINES AT VALVES SHALL HAVE MECHANICAL JOINT RESTRAINT (MJR) IN THE FORM OF MEGALUG 2000 SERIES PV MJR.
- G CUTS WITHIN 4ft. OF EDGE OF ROAD TO BE FLOW FILLED TO WITHIN 6" OF TOP THEN 6" OF CLASS 6 AT 95% COMPACTION
- H CUTS IN ROAD SURFACE SHALL BE FLOW FILLED TO WITHIN 8" OF TOP SURFACE. THEN MATCH LPC STANDARDS OF COMPACTED ROAD BASE WITH MAG CHLORIDE FOR TOP 8".



ELEVATIONS DERIVED FROM COUNTY GIS MAPS AND ARE FOR INFORMATIONAL PURPOSES ONLY. FIELD CONDITIONS MAY VARY.

REVISION  
REV 1 - 4/24/2015

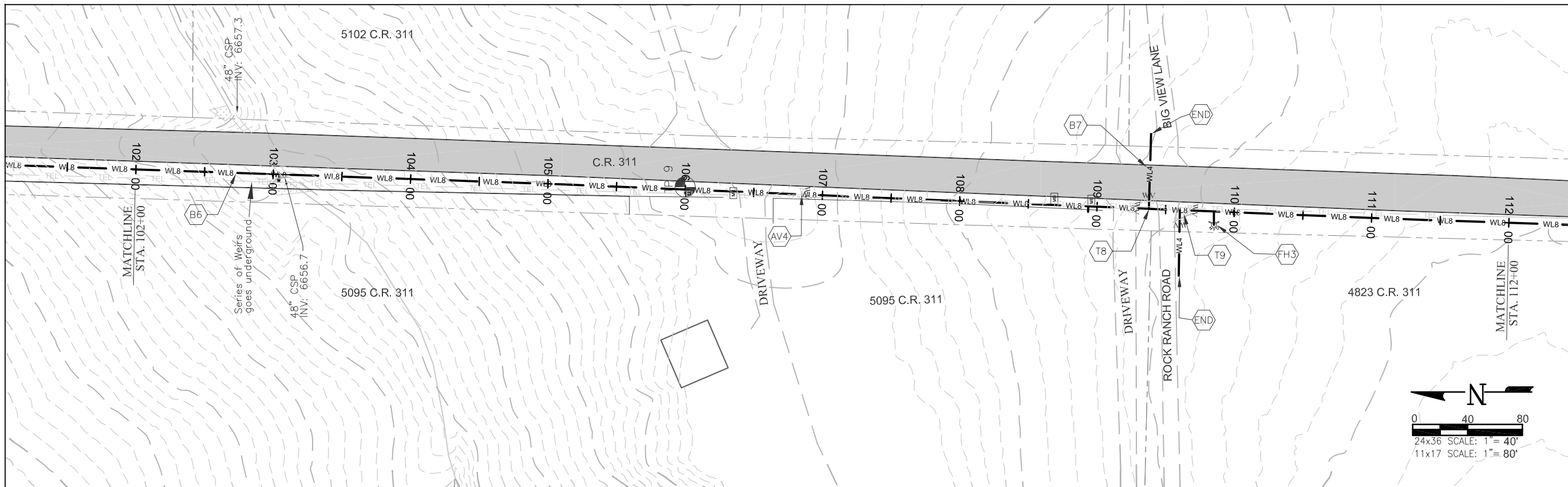


**LA PLATA ARCHULETA WATER DISTRICT  
PHASE 2B WATER PIPELINE  
PLAN AND PROFILE**

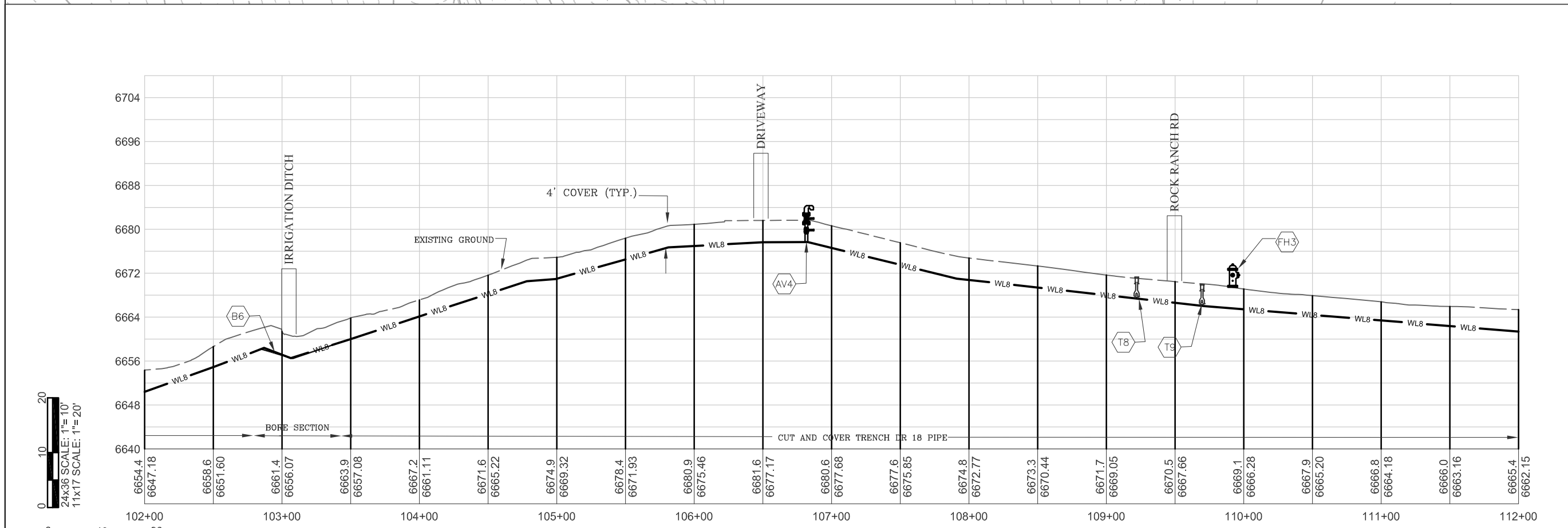
CALL UTILITY NOTIFICATION  
CENTER OF COLORADO  
1-800-922-1987 OR (811)  
CALL 3 BUSINESS DAYS PRIOR  
TO ANY CONSTRUCTION.

**HARRIS WATER ENGINEERING INC.**  
954 East Second Ave.  
Durango, Co. 81303  
970-259-1028

DATE: 03/17/2015  
DRAWN BY: BS  
CHECKED BY: BS  
SHEET  
10 OF 15



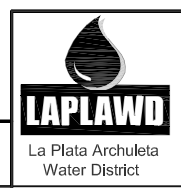
- KEY NOTES**
- "CONTRACTOR TO VERIFY TAP SIZE AND LOCATION PRIOR TO INSTALL AT ALL PLACEMENTS SHOWN. SERVICE TAP LOCATIONS, QUANTITIES AND SIZES ARE SUBJECT TO CHANGE."
  - AV4 INSTALL AIR VAC AT HIGH POINT PER STANDARD DETAILS SHEET 11.
  - T8 8x8x4 TEE WITH 8" VALVE AND 4" VALVE PER STANDARD DETAIL SHEET 6.
  - T9 8x8x4 TEE WITH 8" VALVE AND 4" VALVE PER STANDARD DETAIL SHEET 6.
  - FH3 FIRE HYDRANT 10 FEET FROM EDGE OF ROAD PER STANDARD DETAIL SHEET 8.
  - END INSTALL 3" PIPE AND BLOW-OFF TYPE "A" PER STANDARD DETAIL SHEET 13. INSTALL FIBERGLASS MARKER AT END OF LINE.
  - B6 BORE UNDER IRRIGATION DITCH W/SLEEVE. MAINTAINING 4R OF COVER BELOW BOTTOM OF DITCH PER SHEET 10 STANDARD DETAILS
  - B7 BORE UNDER COUNTY ROAD 311 WITH 4" LINE PER STANDARD DETAILS SHEET 10.
- GENERAL NOTES**
- A ELEVATIONS SHOWN ARE APPROXIMATE AND MAY NOT BE ACCURATE AT TIME OF CONSTRUCTION.
  - B STATIONING WILL BE SUBJECT TO ACTUAL FIELD CONDITIONS AND MAY VARY FROM THAT SHOWN.
  - C CONTACT LPEA PRIOR TO WORK IF EXCAVATING WITHIN 5 FEET OF POWER POLES. MAINTAIN 5 FOOT SEPARATION BETWEEN POWER POLE AND WATERLINE.
  - D ALL FITTINGS ARE STANDARD UNLESS NOTED OTHERWISE. HORIZONTAL BENDS NOT SHOWN ARE TO BE PROVIDED AT NO EXTRA COST.
  - E PVI CHANGES MAY NOT REQUIRE FITTINGS, CHECK USABLE PIPE BEND RADIUS. USABLE PIPE BEND RADIUS NOT TO EXCEED 75% OF MANUFACTURERS RECOMMENDED ALLOWABLE.
  - F ALL LEGS OF WATER LINES AT VALVES SHALL HAVE MECHANICAL JOINT RESTRAINT (MJR) IN THE FORM OF MEGALUG 2000 SERIES PV MR.
  - G CUTS WITHIN 4R. OF EDGE OF ROAD TO BE FLOW FILLED TO WITHIN 6" OF TOP THEN 6" OF CLASS 6 AT 95% COMPACTION
  - H CUTS IN ROAD SURFACE SHALL BE FLOW FILLED TO WITHIN 8" OF TOP SURFACE. THEN MATCH LPC STANDARDS OF COMPACTED ROAD BASE WITH MAG CHLORIDE FOR TOP 8".



- LEGEND**
- WV WATER VALVE
  - FENCE
  - GUARD RAIL
  - OHE OVERHEAD POWERLINE
  - GAS GAS LINE
  - TEL UNDERGROUND TELEPHONE
  - EXIST. EXISTING WATERLINE
  - UNDERGROUND ELECTRIC
  - WETLANDS
  - PROPOSED WATERLINE WITH SIZE SHOWN BY LINETYPE
  - FO FIBER OPTIC MARKER
  - TP TELEPHONE PEDESTAL
  - POWER POLE
  - TRAUTNER BORING HOLE WITH BORE NUMBER ABOVE

ELEVATIONS DERIVED FROM COUNTY GIS MAPS AND ARE FOR INFORMATIONAL PURPOSES ONLY. FIELD CONDITIONS MAY VARY.

REVISION  
REV 1 - 4/24/2015



**LA PLATA ARCHULETA WATER DISTRICT  
PHASE 2B WATER PIPELINE  
PLAN AND PROFILE**

CALL UTILITY NOTIFICATION  
CENTER OF COLORADO  
1-800-922-1987 OR (811)  
CALL 3 BUSINESS DAYS PRIOR  
TO ANY CONSTRUCTION.

**HARRIS WATER  
ENGINEERING INC.**  
954 East Second Ave.  
Durango, Co. 81303  
970-259-1028

DATE: 03/17/2015  
DRAWN BY: BS  
CHECKED BY: BS  
SHEET  
11 OF 15

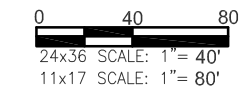
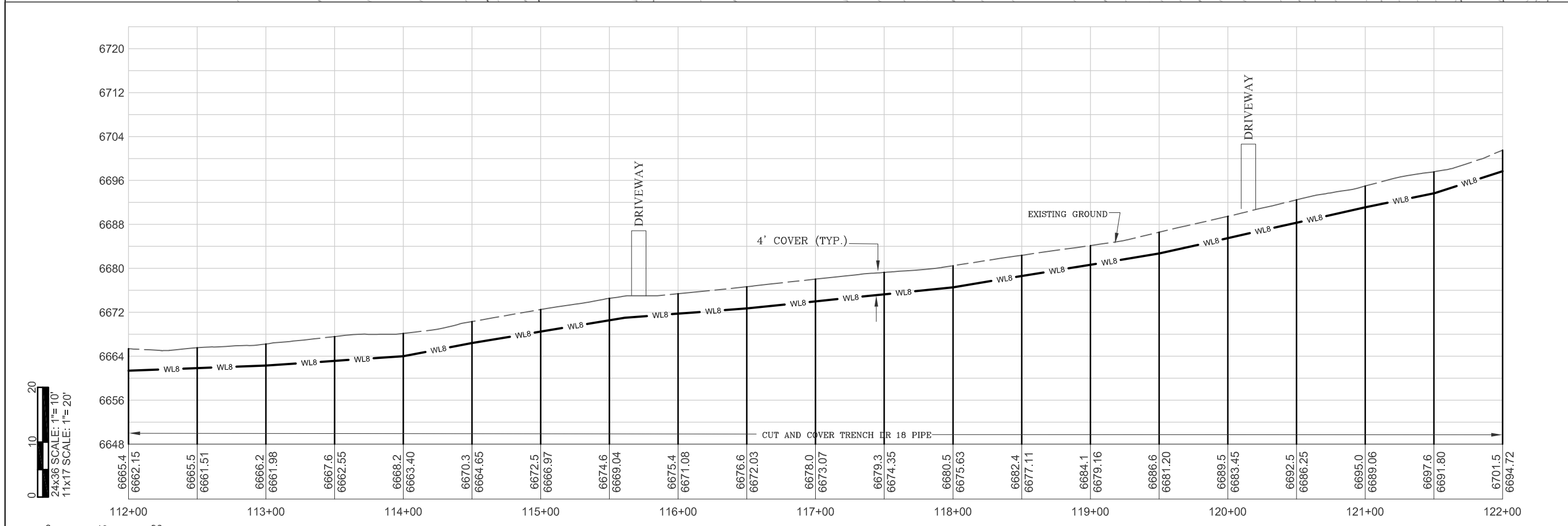
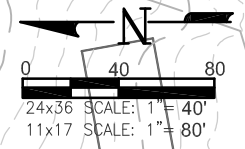




**KEY NOTES**  
 "CONTRACTOR TO VERIFY TAP SIZE AND LOCATION PRIOR TO INSTALL AT ALL PLACEMENTS SHOWN. SERVICE TAP LOCATIONS, QUANTITIES AND SIZES ARE SUBJECT TO CHANGE."

**GENERAL NOTES**

- A ELEVATIONS SHOWN ARE APPROXIMATE AND MAY NOT BE ACCURATE AT TIME OF CONSTRUCTION.
- B STATIONING WILL BE SUBJECT TO ACTUAL FIELD CONDITIONS AND MAY VARY FROM THAT SHOWN.
- C CONTACT LPEA PRIOR TO WORK IF EXCAVATING WITHIN 5 FEET OF POWER POLES. MAINTAIN 5 FOOT SEPARATION BETWEEN POWER POLE AND WATERLINE.
- D ALL FITTINGS ARE STANDARD UNLESS NOTED OTHERWISE. HORIZONTAL BENDS NOT SHOWN ARE TO BE PROVIDED AT NO EXTRA COST.
- E PVI CHANGES MAY NOT REQUIRE FITTINGS. CHECK USABLE PIPE BEND RADIUS. USABLE PIPE BEND RADIUS NOT TO EXCEED 75% OF MANUFACTURERS RECOMMENDED ALLOWABLE.
- F ALL LEGS OF WATER LINES AT VALVES SHALL HAVE MECHANICAL JOINT RESTRAINT (MJR) IN THE FORM OF MEGALUG 2000 SERIES PV MJR.
- G CUTS WITHIN 4ft. OF EDGE OF ROAD TO BE FLOW FILLED TO WITHIN 6" OF TOP THEN 6" OF CLASS 6 AT 95% COMPACTION
- H CUTS IN ROAD SURFACE SHALL BE FLOW FILLED TO WITHIN 8" OF TOP SURFACE. THEN MATCH LPC STANDARDS OF COMPACTED ROAD BASE WITH MAG CHLORIDE FOR TOP 8".



**LEGEND**

	WATER VALVE
	FENCE
	GUARD RAIL
	OVERHEAD POWERLINE
	GAS LINE
	UNDERGROUND TELEPHONE
	EXISTING WATERLINE
	UNDERGROUND ELECTRIC
	WETLANDS
	PROPOSED WATERLINE WITH SIZE SHOWN BY LINETYPE
	FIBER OPTIC MARKER
	TELEPHONE PEDESTAL
	POWER POLE
	TRAUTNER BORING HOLE WITH BORE NUMBER ABOVE

ELEVATIONS DERIVED FROM COUNTY GIS MAPS AND ARE FOR INFORMATIONAL PURPOSES ONLY. FIELD CONDITIONS MAY VARY.

REVISION  
 REV 1 - 4/24/2015

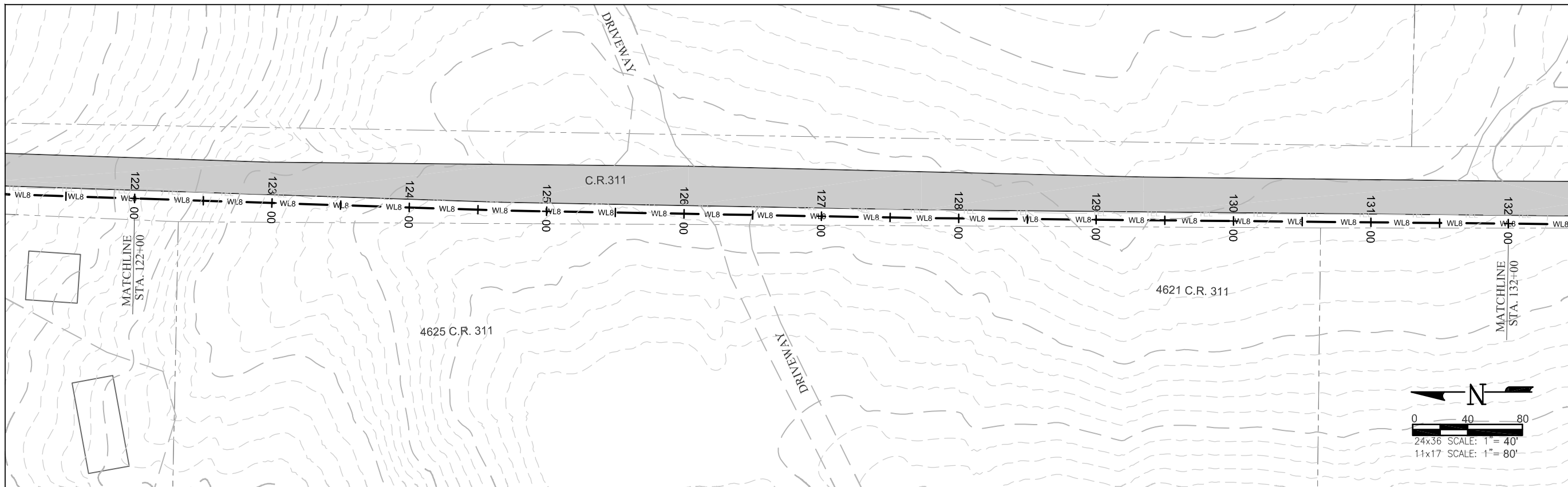


**LA PLATA ARCHULETA WATER DISTRICT  
 PHASE 2B WATER PIPELINE  
 PLAN AND PROFILE**

CALL UTILITY NOTIFICATION  
 CENTER OF COLORADO  
 1-800-922-1987 OR (811)  
 CALL 3 BUSINESS DAYS PRIOR  
 TO ANY CONSTRUCTION.

**HARRIS WATER  
 ENGINEERING INC.**  
 954 East Second Ave.  
 Durango, Co. 81303  
 970-259-1028

DATE: 03/17/2015  
 DRAWN BY: BS  
 CHECKED BY: BS  
 SHEET  
 12 OF 15

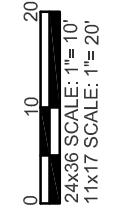
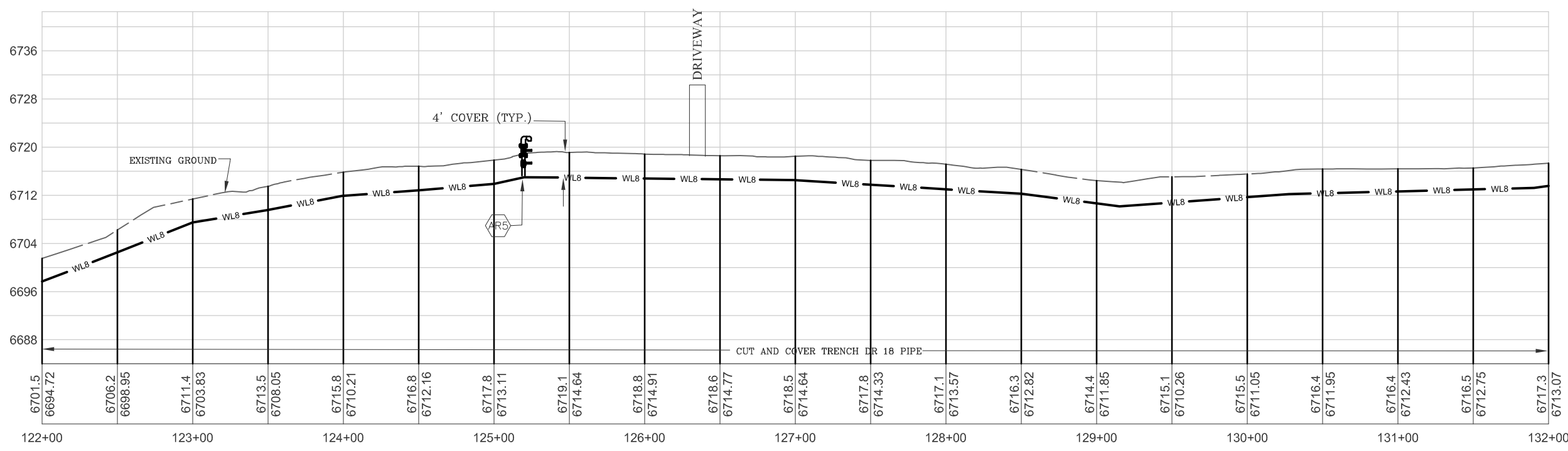
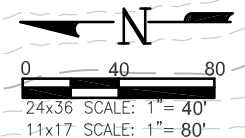


**KEY NOTES**

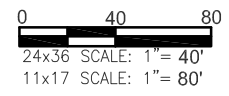
\*CONTRACTOR TO VERIFY TAP SIZE AND LOCATION PRIOR TO INSTALL AT ALL PLACEMENTS SHOWN. SERVICE TAP LOCATIONS, QUANTITIES AND SIZES ARE SUBJECT TO CHANGE.\*

ARS INSTALL AIR VAC AT HIGH POINT PER STANDARD DETAILS SHEET 11.

- GENERAL NOTES**
- A ELEVATIONS SHOWN ARE APPROXIMATE AND MAY NOT BE ACCURATE AT TIME OF CONSTRUCTION.
  - B STATIONING WILL BE SUBJECT TO ACTUAL FIELD CONDITIONS AND MAY VARY FROM THAT SHOWN.
  - C CONTACT LPEA PRIOR TO WORK IF EXCAVATING WITHIN 5 FEET OF POWER POLES. MAINTAIN 5 FOOT SEPARATION BETWEEN POWER POLE AND WATERLINE.
  - D ALL FITTINGS ARE STANDARD UNLESS NOTED OTHERWISE. HORIZONTAL BENDS NOT SHOWN ARE TO BE PROVIDED AT NO EXTRA COST.
  - E PVI CHANGES MAY NOT REQUIRE FITTINGS. CHECK USABLE PIPE BEND RADIUS. USABLE PIPE BEND RADIUS NOT TO EXCEED 75% OF MANUFACTURERS RECOMMENDED ALLOWABLE.
  - F ALL LEGS OF WATER LINES AT VALVES SHALL HAVE MECHANICAL JOINT RESTRAINT (MJR) IN THE FORM OF MEGALUG 2000 SERIES PV MJR.
  - G CUTS WITHIN 4ft. OF EDGE OF ROAD TO BE FLOW FILLED TO WITHIN 6" OF TOP THEN 6" OF CLASS 6 AT 95% COMPACTION
  - H CUTS IN ROAD SURFACE SHALL BE FLOW FILLED TO WITHIN 8" OF TOP SURFACE. THEN MATCH LPC STANDARDS OF COMPACTED ROAD BASE WITH MAG CHLORIDE FOR TOP 8".



- LEGEND**
- WV WATER VALVE
  - FENCE
  - GUARD RAIL
  - OHE OVERHEAD POWERLINE
  - GAS GAS LINE
  - TEL UNDERGROUND TELEPHONE
  - EWL EXISTING WATERLINE
  - UNDERGROUND ELECTRIC
  - WETLANDS
  - PROPOSED WATERLINE WITH SIZE SHOWN BY LINETYPE
  - FO FIBER OPTIC MARKER
  - TELEPHONE PEDESTAL
  - POWER POLE
  - TRAUTNER BORING HOLE WITH BORE NUMBER ABOVE



ELEVATIONS DERIVED FROM COUNTY GIS MAPS AND ARE FOR INFORMATIONAL PURPOSES ONLY. FIELD CONDITIONS MAY VARY.

REVISION  
REV 1 - 4/24/2015

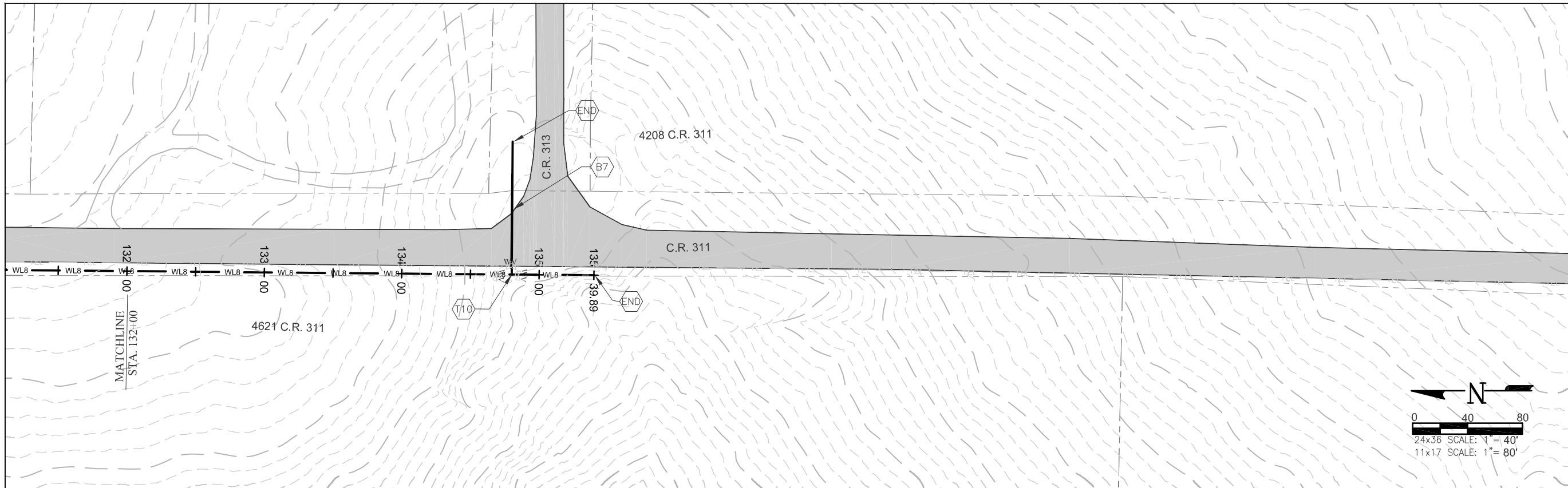


**LA PLATA ARCHULETA WATER DISTRICT  
PHASE 2B WATER PIPELINE  
PLAN AND PROFILE**

CALL UTILITY NOTIFICATION  
CENTER OF COLORADO  
1-800-922-1987 OR (811)  
CALL 3 BUSINESS DAYS PRIOR  
TO ANY CONSTRUCTION.

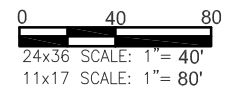
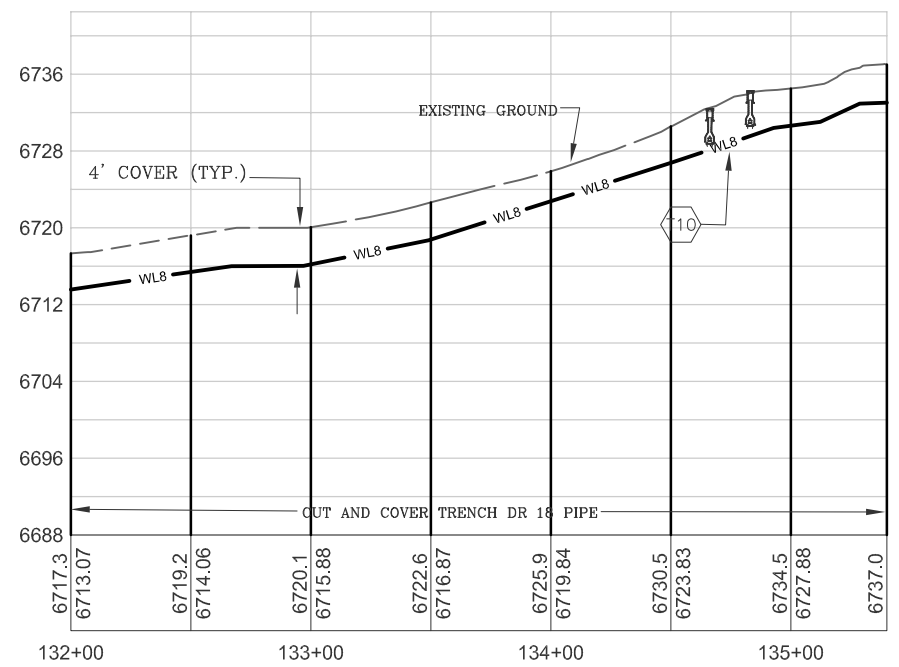
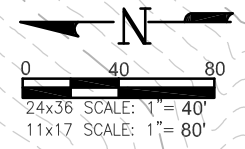
**HARRIS WATER  
ENGINEERING INC.**  
954 East Second Ave.  
Durango, Co. 81303  
970-259-1028

DATE: 03/17/2015  
DRAWN BY: BS  
CHECKED BY: BS  
SHEET  
13 OF 15



- KEY NOTES**
- "CONTRACTOR TO VERIFY TAP SIZE AND LOCATION PRIOR TO INSTALL AT ALL PLACEMENTS SHOWN. SERVICE TAP LOCATIONS, QUANTITIES AND SIZES ARE SUBJECT TO CHANGE."
  - END INSTALL 3" PIPE AND BLOW-OFF TYPE "A" PER STANDARD DETAIL SHEET 13. INSTALL FIBERGLASS MARKER AT END OF LINE.
  - T10 INSTALL 8x8x4 TEE WITH 8" VALVES ON TWO LEGS AND ONE 4" VALVE. PER STANDARD DETAILS SHEET 6.
  - B7 BORE UNDER COUNTY ROAD 311 WITH 4" LINE PER STANDARD DETAILS SHEET 10.

- GENERAL NOTES**
- A ELEVATIONS SHOWN ARE APPROXIMATE AND MAY NOT BE ACCURATE AT TIME OF CONSTRUCTION.
  - B STATIONING WILL BE SUBJECT TO ACTUAL FIELD CONDITIONS AND MAY VARY FROM THAT SHOWN.
  - C CONTACT LPEA PRIOR TO WORK IF EXCAVATING WITHIN 5 FEET OF POWER POLES. MAINTAIN 5 FOOT SEPARATION BETWEEN POWER POLE AND WATERLINE.
  - D ALL FITTINGS ARE STANDARD UNLESS NOTED OTHERWISE. HORIZONTAL BENDS NOT SHOWN ARE TO BE PROVIDED AT NO EXTRA COST.
  - E PVI CHANGES MAY NOT REQUIRE FITTINGS. CHECK USABLE PIPE BEND RADIUS. USABLE PIPE BEND RADIUS NOT TO EXCEED 75% OF MANUFACTURERS RECOMMENDED ALLOWABLE.
  - F ALL LEGS OF WATER LINES AT VALVES SHALL HAVE MECHANICAL JOINT RESTRAINT (MJR) IN THE FORM OF MEGALUG 2000 SERIES PV MJR.
  - G CUTS WITHIN 4ft. OF EDGE OF ROAD TO BE FLOW FILLED TO WITHIN 6" OF TOP THEN 6" OF CLASS 6 AT 95% COMPACTION
  - H CUTS IN ROAD SURFACE SHALL BE FLOW FILLED TO WITHIN 8" OF TOP SURFACE. THEN MATCH LPC STANDARDS OF COMPACTED ROAD BASE WITH MAG CHLORIDE FOR TOP 8".



ELEVATIONS DERIVED FROM COUNTY GIS MAPS AND ARE FOR INFORMATIONAL PURPOSES ONLY. FIELD CONDITIONS MAY VARY.

REVISION  
REV 1 - 4/24/2015



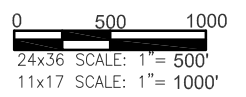
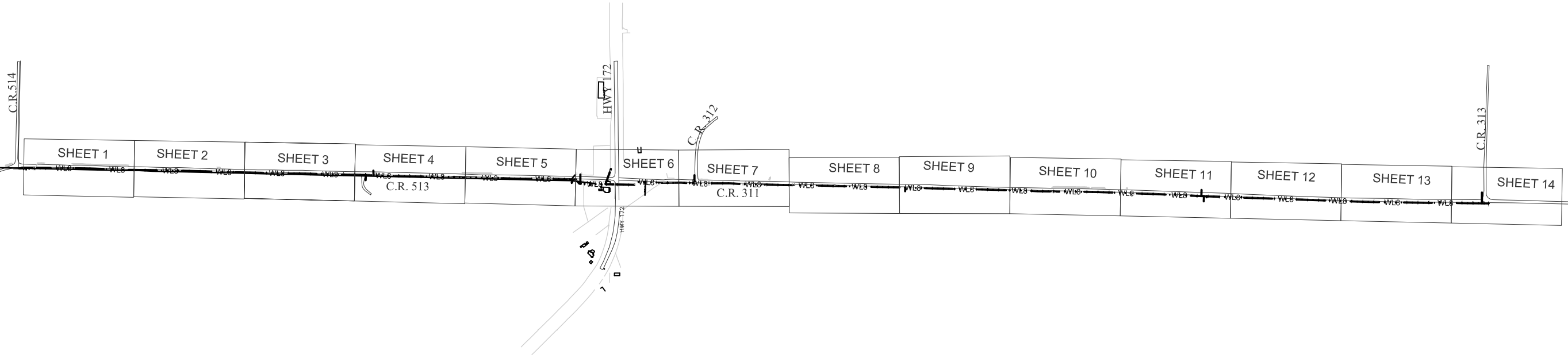
LA PLATA ARCHULETA WATER DISTRICT  
PHASE 2B WATER PIPELINE  
PLAN AND PROFILE

CALL UTILITY NOTIFICATION  
CENTER OF COLORADO  
1-800-922-1987 OR (811)  
CALL 3 BUSINESS DAYS PRIOR  
TO ANY CONSTRUCTION.

**HARRIS WATER ENGINEERING INC.**  
954 East Second Ave.  
Durango, Co. 81303  
970-259-1028

DATE: 03/17/2015  
DRAWN BY: BS  
CHECKED BY: BS  
SHEET  
14 OF 15

- LEGEND**
- WV WATER VALVE
  - FENCE
  - GUARD RAIL
  - OHE OVERHEAD POWERLINE
  - GAS GAS LINE
  - TEL UNDERGROUND TELEPHONE
  - EXIST. EXISTING WATERLINE
  - UNDERGROUND ELECTRIC
  - WETLANDS
  - PROPOSED WATERLINE WITH SIZE SHOWN BY LINETYPE
  - FO FIBER OPTIC MARKER
  - TP TELEPHONE PEDESTAL
  - POWER POLE
  - TRAUTNER BORING HOLE WITH BORE NUMBER ABOVE



REVISION  
REV 1 - 4/24/2015



LA PLATA ARCHULETA WATER DISTRICT  
PHASE 2B WATER PIPELINE  
SHEET LOCATIONS

CALL UTILITY NOTIFICATION  
CENTER OF COLORADO  
1-800-922-1987 OR (811)  
CALL 3 BUSINESS DAYS PRIOR  
TO ANY CONSTRUCTION.

**HARRIS WATER  
ENGINEERING INC.**  
954 East Second Ave.  
Durango, Co. 81303  
970-259-1028

DATE: 03/17/2015  
DRAWN BY: BS  
CHECKED BY: BS  
SHEET  
15 OF 15