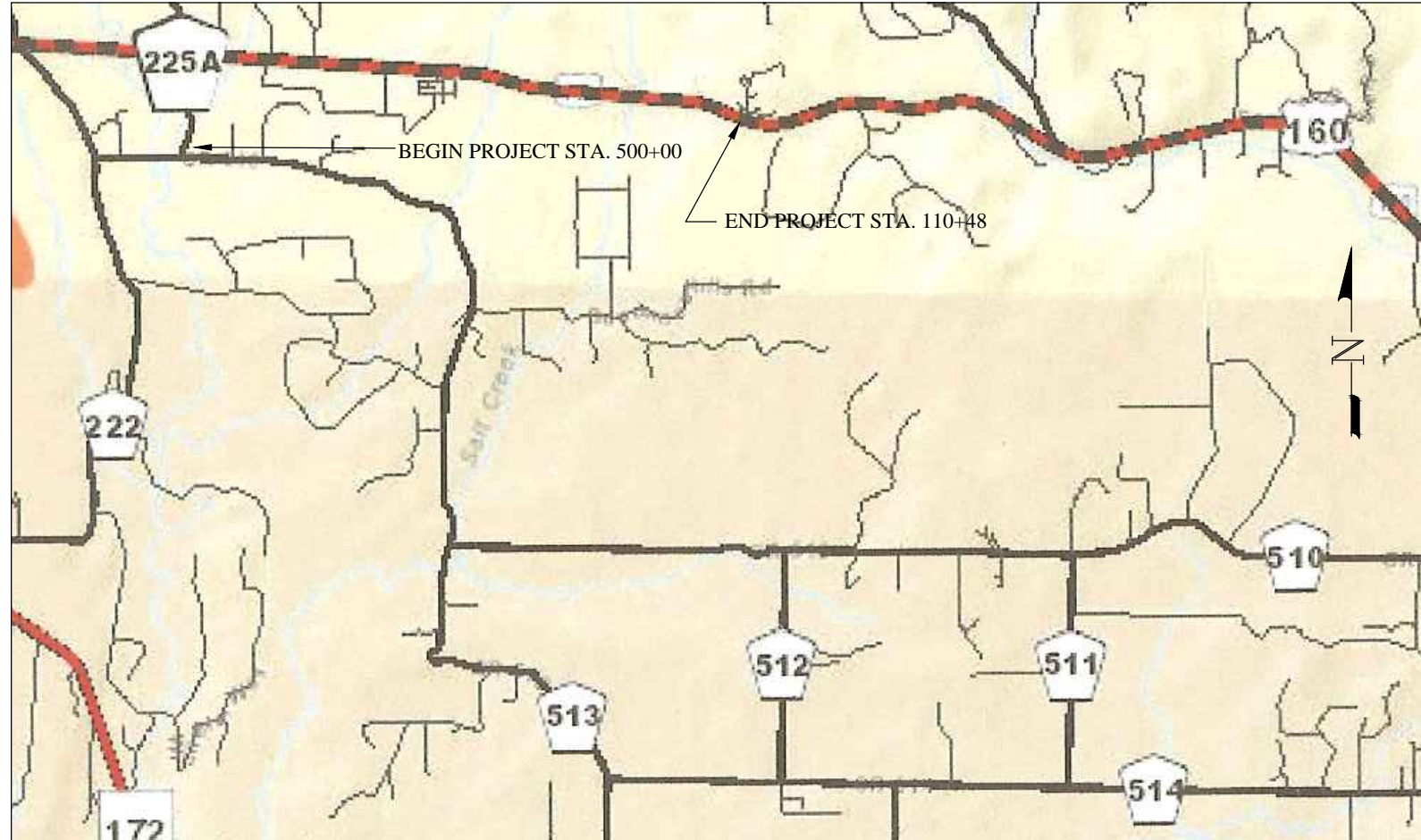


LA PLATA ARCHULETA WATER DISTRICT WATER LINES PHASE 1F WATER PIPELINE

La Plata County, Colorado

SHEET DESCRIPTION

- 1.....PLAN AND PROFILE STA. 5+00 TO STA. 15+00
- 2.....PLAN AND PROFILE STA. 15+00 TO STA. 25+00
- 3.....PLAN AND PROFILE STA. 25+00 TO STA. 35+00
- 3A.....PLAN AND PROFILE STA. 30+79.53 = 0+00 TO STA. 2+87
- 4.....PLAN AND PROFILE STA. 35+00 TO STA. 45+00
- 5.....PLAN AND PROFILE STA. 45+00 TO STA. 55+00
- 6.....PLAN AND PROFILE STA. 55+00 TO STA. 65+00
- 7.....PLAN AND PROFILE STA. 65+00 TO STA. 75+00
- 8.....PLAN AND PROFILE STA. 75+00 TO STA. 85+00
- 9.....PLAN AND PROFILE STA. 85+00 TO STA. 95+00
- 10.....PLAN AND PROFILE STA. 95+00 TO STA. 105+00
- 11.....PLAN AND PROFILE STA. 105+00 TO STA. 115+00
- 12.....PLAN AND PROFILE STA. 115+00 TO STA. 125+00
- 13.....PLAN AND PROFILE STA. 125+00 TO STA. 136+74.6
- 14.....PLAN AND PROFILE STA. SHEET LOCATIONS



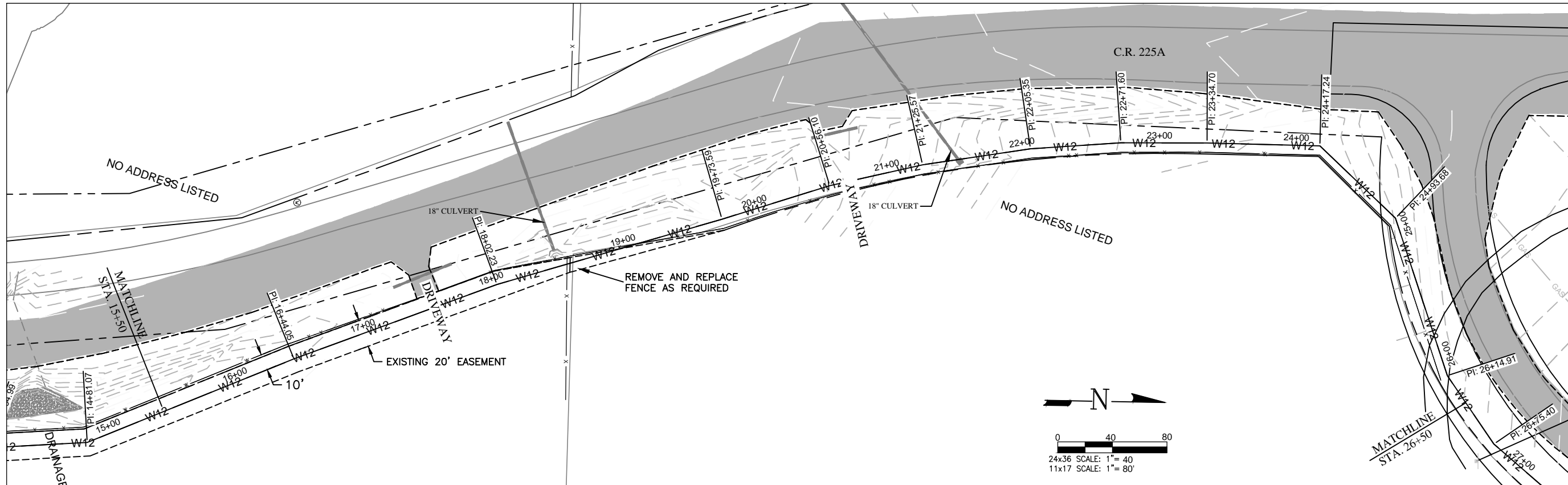
LA PLATA ARCHULETA WATER DISTRICT
PHASE 1F WATER PIPELINE
COVER SHEET

CALL UTILITY NOTIFICATION
CENTER OF COLORADO
1-800-922-1987 OR (811)
CALL 3 BUSINESS DAYS PRIOR
TO ANY CONSTRUCTION.

**HARRIS WATER
ENGINEERING INC.**
954 East Second Ave.
Durango, Co. 81303
970-259-1028

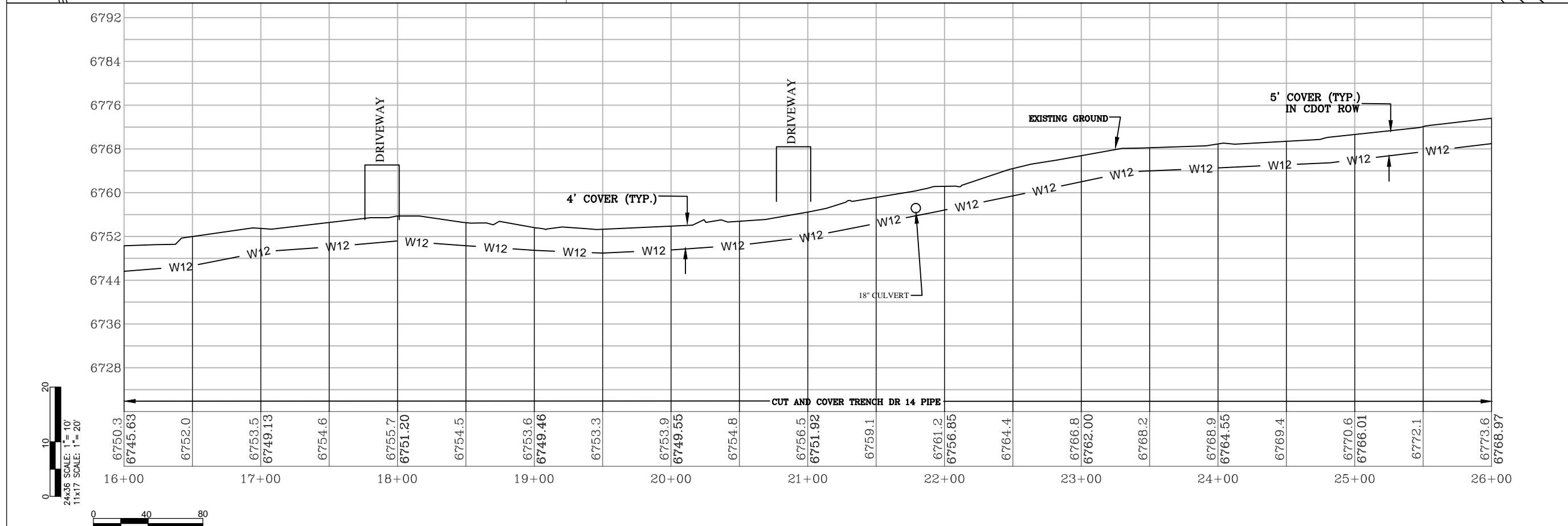
DATE: 4/10/2017
REV 1 DATE: 5/9/2017
DRAWN BY: MG
CHECKED BY: BS

SHEET
00 OF 14



KEY NOTES
 "CONTRACTOR TO VERIFY TAP SIZE AND LOCATION PRIOR TO INSTALL AT ALL PLACEMENTS SHOWN. SERVICE TAP LOCATIONS, QUANTITIES AND SIZES ARE SUBJECT TO CHANGE."

- GENERAL NOTES**
- A ELEVATIONS SHOWN ARE APPROXIMATE AND MAY NOT BE ACCURATE AT TIME OF CONSTRUCTION.
 - B STATIONING WILL BE SUBJECT TO ACTUAL FIELD CONDITIONS AND MAY VARY FROM THAT SHOWN.
 - C CONTACT LPEA PRIOR TO WORK IF EXCAVATING WITHIN 5 FEET OF POWER POLES. MAINTAIN 5 FOOT SEPARATION BETWEEN POWER POLE AND WATERLINE.
 - D ALL FITTINGS ARE STANDARD UNLESS NOTED OTHERWISE. HORIZONTAL BENDS NOT SHOWN ARE TO BE PROVIDED AT NO EXTRA COST.
 - E PVI CHANGES MAY NOT REQUIRE FITTINGS, CHECK USABLE PIPE BEND RADIUS. USABLE PIPE BEND RADIUS NOT TO EXCEED 75% OF MANUFACTURERS RECOMMENDED ALLOWABLE.
 - F ALL LEGS OF WATER LINES AT VALVES SHALL HAVE MECHANICAL JOINT RESTRAINT (MJR) IN THE FORM OF MEGALUG 2000 SERIES PV MJR.
 - G CUTS WITHIN 4ft. OF EDGE OF ROAD TO BE FLOW FILLED TO WITHIN 6" OF TOP THEN 6" OF CLASS 6 AT 95% COMPACTION OR BACKFILLED WITH CLASS 6 ENTIRE DEPTH IN 12" LIFTS AT 95% COMPACTION VERIFIED BY TESTING.
 - H CUTS IN ROAD SURFACE SHALL BE FLOW FILLED TO WITHIN 8" OF TOP SURFACE. THEN MATCH LPC STANDARDS OF COMPACTED ROAD BASE WITH MAG CHLORIDE FOR TOP 8".



LEGEND

	WATER VALVE
	FENCE
	GUARD RAIL
	OVERHEAD POWERLINE
	GAS LINE
	UNDERGROUND TELEPHONE
	EXISTING WATERLINE
	UNDERGROUND ELECTRIC
	WETLANDS
	PROPOSED WATERLINE WITH SIZE SHOWN BY LINETYPE
	FIBER OPTIC MARKER
	TELEPHONE PEDESTAL
	POWER POLE
	TRAUTNER BORING HOLE WITH BORE NUMBER ABOVE
	PROPOSED CDOT ROADWAY
	TREE - CONIFER
	TREE - DECIDUOUS



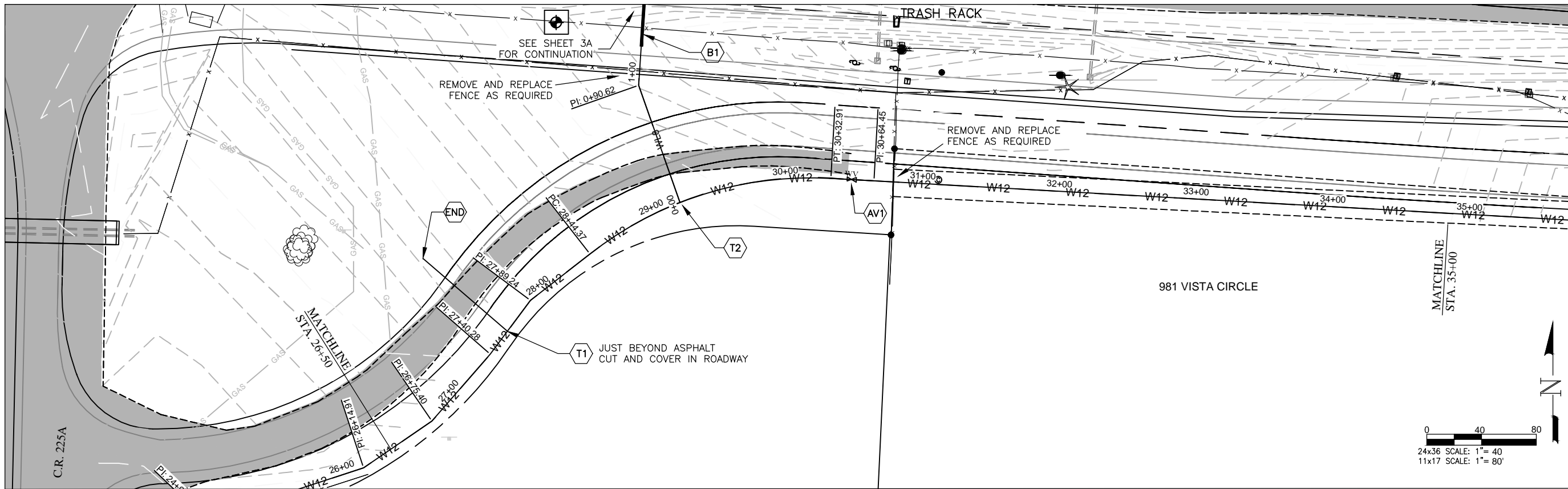
**LA PLATA ARCHULETA WATER DISTRICT
 PHASE 1F WATER PIPELINE
 PLAN AND PROFILE**

CALL UTILITY NOTIFICATION
 CENTER OF COLORADO
 1-800-922-1987 OR (811)
 CALL 3 BUSINESS DAYS PRIOR
 TO ANY CONSTRUCTION.

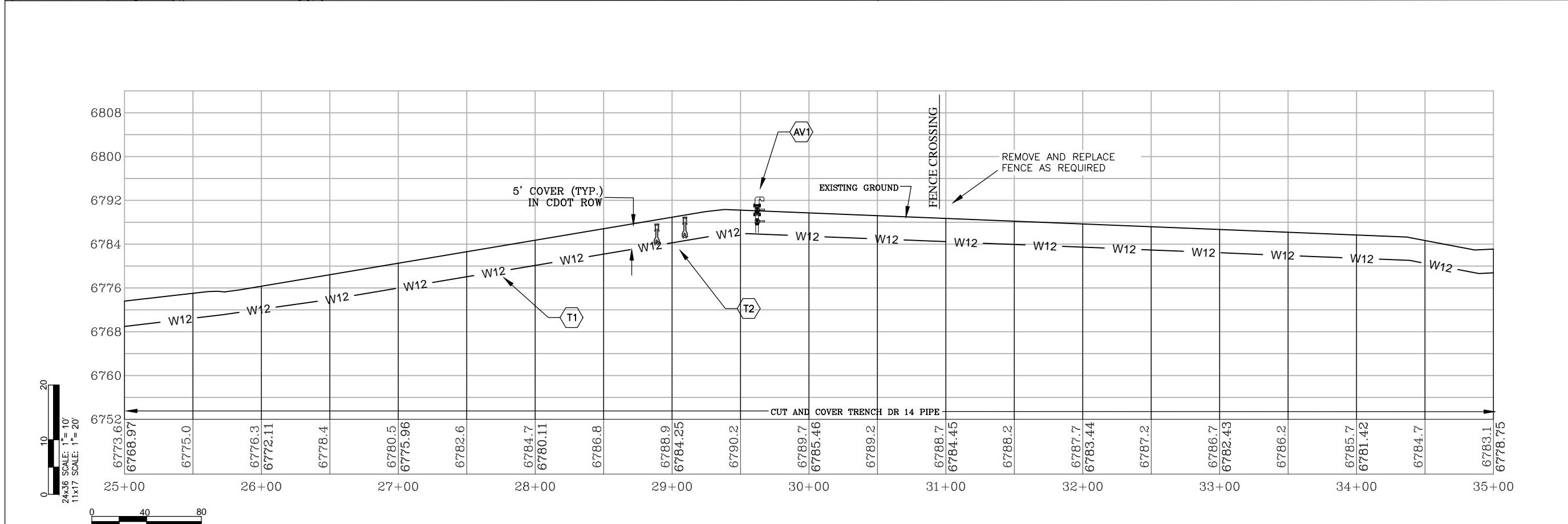
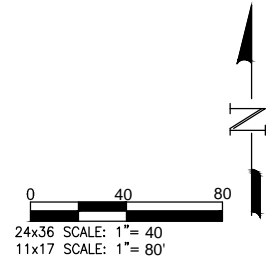
**HARRIS WATER
 ENGINEERING INC.**
 954 East Second Ave.
 Durango, Co. 81303
 970-259-1028

DATE: 4/10/2017
 REV 1 DATE: 5/9/2017
 DRAWN BY: MG
 CHECKED BY: BS
 SHEET
 02 OF 14

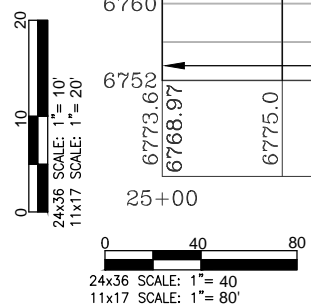
ELEVATIONS DERIVED FROM COUNTY GIS MAPS AND ARE FOR INFORMATIONAL PURPOSES ONLY. FIELD CONDITIONS MAY VARY.



- KEY NOTES**
- "CONTRACTOR TO VERIFY TAP SIZE AND LOCATION PRIOR TO INSTALL AT ALL PLACEMENTS SHOWN. SERVICE TAP LOCATIONS, QUANTITIES AND SIZES ARE SUBJECT TO CHANGE."
 - AV1) INSTALL AIR VAC AT HIGH POINT PER STANDARD DETAILS SHEET 11.
 - T1) 12x12x4 WITH ONE 4" GATE VALVE PER STANDARD DETAILS SHEET 6.
 - END) INSTALL 2" BLOW-OFF-TYPE "A" PER STANDARD DETAILS SHEET 13. INSTALL FIBERGLASS MARKER AT END OF LINE.
 - B1) BORE UNDER HWY 160 WITH 8" LINE PER STANDARD DETAILS SHEET 10.
 - T2) 12x12x8 WITH TWO 12" GATE VALVES AND ONE 8" GATE VALVE PER STANDARD DETAILS SHEET 6.
- GENERAL NOTES**
- A) ELEVATIONS SHOWN ARE APPROXIMATE AND MAY NOT BE ACCURATE AT TIME OF CONSTRUCTION.
 - B) STATIONING WILL BE SUBJECT TO ACTUAL FIELD CONDITIONS AND MAY VARY FROM THAT SHOWN.
 - C) CONTACT LPEA PRIOR TO WORK IF EXCAVATING WITHIN 5 FEET OF POWER POLES. MAINTAIN 5 FOOT SEPARATION BETWEEN POWER POLE AND WATERLINE.
 - D) ALL FITTINGS ARE STANDARD UNLESS NOTED OTHERWISE. HORIZONTAL BENDS NOT SHOWN ARE TO BE PROVIDED AT NO EXTRA COST.
 - E) PVI CHANGES MAY NOT REQUIRE FITTINGS, CHECK USABLE PIPE BEND RADIUS. USABLE PIPE BEND RADIUS NOT TO EXCEED 75% OF MANUFACTURERS RECOMMENDED ALLOWABLE.
 - F) ALL LEGS OF WATER LINES AT VALVES SHALL HAVE MECHANICAL JOINT RESTRAINT (MJR) IN THE FORM OF MEGALUG 2000 SERIES PV MJR.
 - G) CUTS WITHIN 4ft. OF EDGE OF ROAD TO BE FLOW FILLED TO WITHIN 6" OF TOP THEN 6" OF CLASS 6 AT 95% COMPACTION OR BACKFILLED WITH CLASS 6 ENTIRE DEPTH IN 12" LIFTS AT 95% COMPACTION VERIFIED BY TESTING.
 - H) CUTS IN ROAD SURFACE SHALL BE FLOW FILLED TO WITHIN 8" OF TOP SURFACE. THEN MATCH LPC STANDARDS OF COMPACTED ROAD BASE WITH MAG CHLORIDE FOR TOP 8".



- LEGEND**
- WV WATER VALVE
 - FENCE
 - GUARD RAIL
 - OVERHEAD POWERLINE
 - GAS LINE
 - UNDERGROUND TELEPHONE
 - EXISTING WATERLINE
 - UNDERGROUND ELECTRIC
 - WETLANDS
 - PROPOSED WATERLINE WITH SIZE SHOWN BY LINETYPE
 - FO FIBER OPTIC MARKER
 - TP TELEPHONE PEDESTAL
 - POWER POLE
 - TRAUTNER BORING HOLE WITH BORE NUMBER ABOVE
 - PROPOSED CDOT ROADWAY
 - TREE - CONIFER
 - TREE - DECIDUOUS



ELEVATIONS DERIVED FROM COUNTY GIS MAPS AND ARE FOR INFORMATIONAL PURPOSES ONLY. FIELD CONDITIONS MAY VARY.

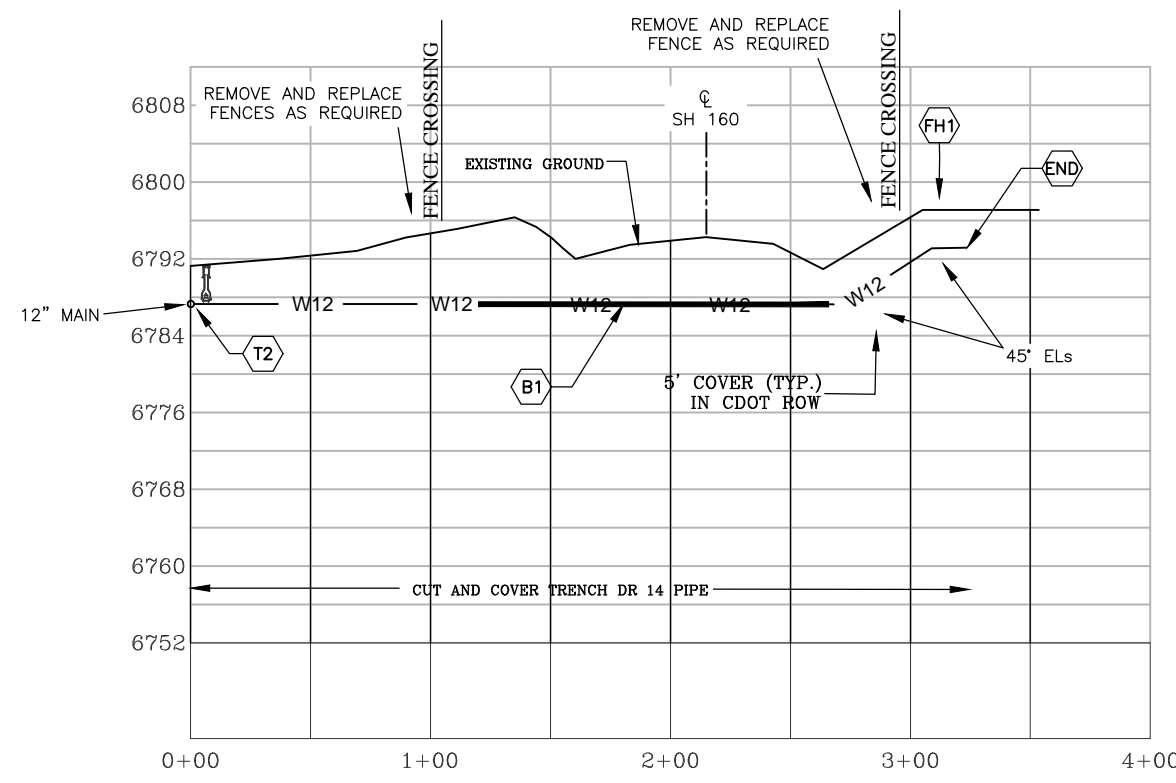
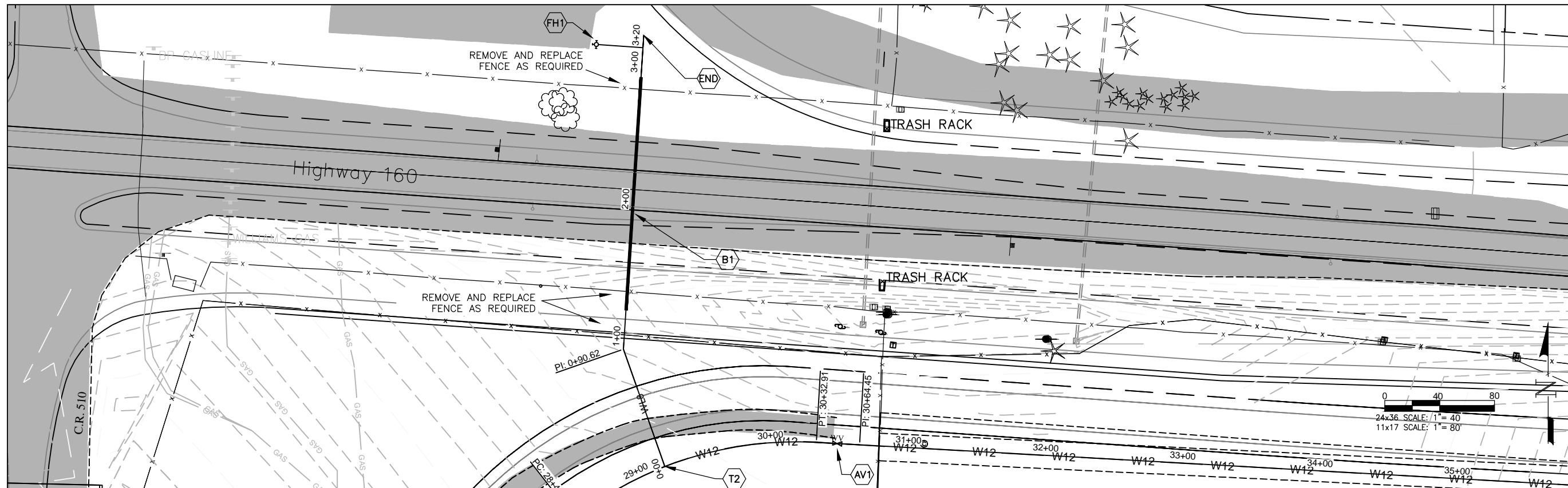


**LA PLATA ARCHULETA WATER DISTRICT
PHASE 1F WATER PIPELINE
PLAN AND PROFILE**

CALL UTILITY NOTIFICATION
CENTER OF COLORADO
1-800-922-1987 OR (811)
CALL 3 BUSINESS DAYS PRIOR
TO ANY CONSTRUCTION.

**HARRIS WATER
ENGINEERING INC.**
954 East Second Ave.
Durango, Co. 81303
970-259-1028

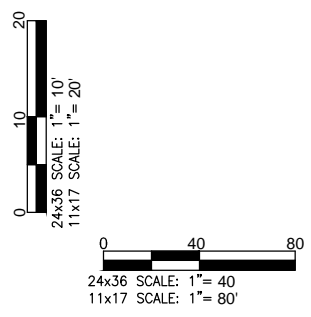
DATE: 4/10/2017
REV 1 DATE: 5/9/2017
DRAWN BY: MG
CHECKED BY: BS
SHEET
03 OF 14



- KEY NOTES**
- *CONTRACTOR TO VERIFY TAP SIZE AND LOCATION PRIOR TO INSTALL AT ALL PLACEMENTS SHOWN. SERVICE TAP LOCATIONS, QUANTITIES AND SIZES ARE SUBJECT TO CHANGE.
 - AV1 INSTALL AIR VAC AT HIGH POINT PER STANDARD DETAILS SHEET 11.
 - END INSTALL FIBERGLASS MARKER AT END OF LINE.
 - B1 BORE UNDER HIGHWAY WITH 8" LINE PER STANDARD DETAILS SHEET 10. MINIMUM 5' DEPTH TO TOP OF CASING PIPE.
 - T2 12x12x8 WITH TWO 12" GATE VALVES AND ONE 8" GATE VALVE PER STANDARD DETAILS SHEET 6.
 - FH1 INSTALL FIRE HYDRANT OFF 12" MAIN PER STANDARD DETAILS SHEET 8.

- GENERAL NOTES**
- A ELEVATIONS SHOWN ARE APPROXIMATE AND MAY NOT BE ACCURATE AT TIME OF CONSTRUCTION.
 - B STATIONING WILL BE SUBJECT TO ACTUAL FIELD CONDITIONS AND MAY VARY FROM THAT SHOWN.
 - C CONTACT LPEA PRIOR TO WORK IF EXCAVATING WITHIN 5 FEET OF POWER POLES. MAINTAIN 5 FOOT SEPARATION BETWEEN POWER POLE AND WATERLINE.
 - D ALL FITTINGS ARE STANDARD UNLESS NOTED OTHERWISE. HORIZONTAL BENDS NOT SHOWN ARE TO BE PROVIDED AT NO EXTRA COST.
 - E PVI CHANGES MAY NOT REQUIRE FITTINGS, CHECK USABLE PIPE BEND RADIUS. USABLE PIPE BEND RADIUS NOT TO EXCEED 75% OF MANUFACTURERS RECOMMENDED ALLOWABLE.
 - F ALL LEGS OF WATER LINES AT VALVES SHALL HAVE MECHANICAL JOINT RESTRAINT (MJR) IN THE FORM OF MEGALUG 2000 SERIES PV MJR.
 - G CUTS WITHIN 4ft. OF EDGE OF ROAD TO BE FLOW FILLED TO WITHIN 6" OF TOP THEN 6" OF CLASS 6 AT 95% COMPACTION OR BACKFILLED WITH CLASS 6 ENTIRE DEPTH IN 12" LIFTS AT 95% COMPACTION VERIFIED BY TESTING.
 - H CUTS IN ROAD SURFACE SHALL BE FLOW FILLED TO WITHIN 8" OF TOP SURFACE. THEN MATCH LPC STANDARDS OF COMPACTED ROAD BASE WITH MAG CHLORIDE FOR TOP 8".

- LEGEND**
- WV WATER VALVE
 - FENCE
 - GUARD RAIL
 - OPH OVERHEAD POWERLINE
 - GAS GAS LINE
 - TEL UNDERGROUND TELEPHONE
 - EWL EXISTING WATERLINE
 - UGE UNDERGROUND ELECTRIC
 - WETLANDS
 - PW PROPOSED WATERLINE WITH SIZE SHOWN BY LINETYPE
 - FO FIBER OPTIC MARKER
 - TP TELEPHONE PEDESTAL
 - PP POWER POLE
 - TBH TRAUTNER BORING HOLE WITH BORE NUMBER ABOVE
 - PROPOSED CDOT ROADWAY
 - TR TREE - CONIFER
 - TD TREE - DECIDUOUS

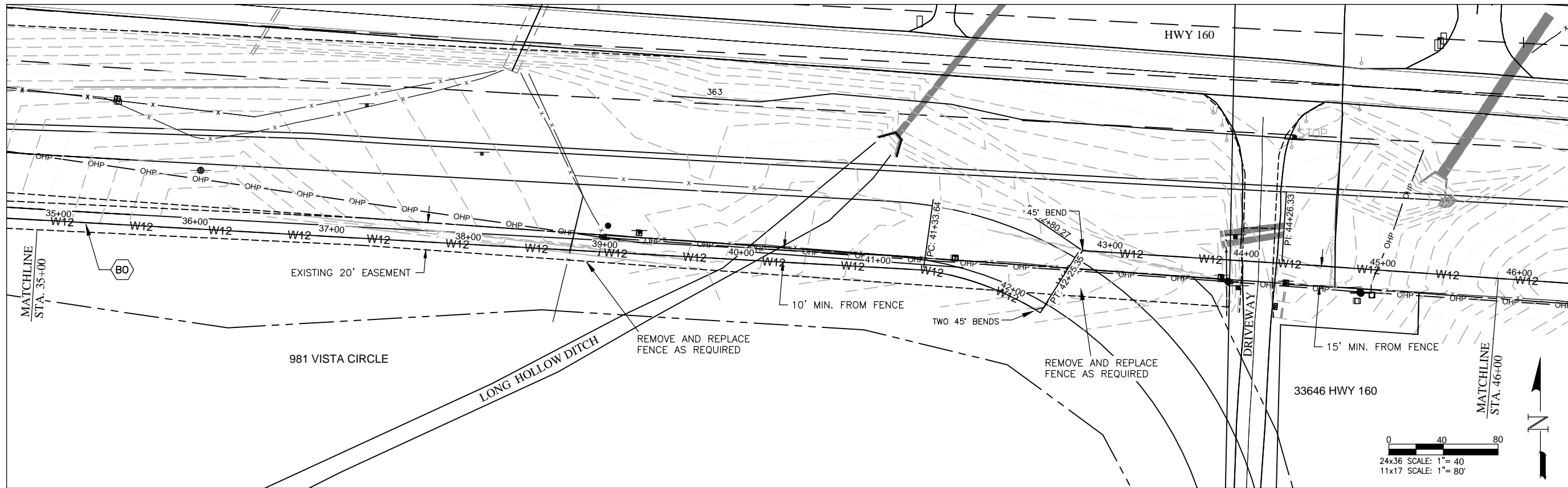


**LA PLATA ARCHULETA WATER DISTRICT
PHASE 1F WATER PIPELINE
PLAN AND PROFILE**

CALL UTILITY NOTIFICATION
CENTER OF COLORADO
1-800-922-1987 OR (811)
CALL 3 BUSINESS DAYS PRIOR
TO ANY CONSTRUCTION.

**HARRIS WATER
ENGINEERING INC.**
954 East Second Ave.
Durango, Co. 81303
970-259-1028

DATE: 4/10/2017
REV 1 DATE: 5/9/2017
DRAWN BY: MG
CHECKED BY: BS
SHEET
03A OF 14



KEY NOTES
 "CONTRACTOR TO VERIFY TAP SIZE AND LOCATION PRIOR TO INSTALL AT ALL PLACEMENTS SHOWN. SERVICE TAP LOCATIONS, QUANTITIES AND SIZES ARE SUBJECT TO CHANGE."

BO INSTALL TYPE B BLOWOFF VALVE PER STANDARD DETAILS SHEET 13.

GENERAL NOTES

A ELEVATIONS SHOWN ARE APPROXIMATE AND MAY NOT BE ACCURATE AT TIME OF CONSTRUCTION.

B STATIONING WILL BE SUBJECT TO ACTUAL FIELD CONDITIONS AND MAY VARY FROM THAT SHOWN.

C CONTACT LPEA PRIOR TO WORK IF EXCAVATING WITHIN 5 FEET OF POWER POLES. MAINTAIN 5 FOOT SEPARATION BETWEEN POWER POLE AND WATERLINE.

D ALL FITTINGS ARE STANDARD UNLESS NOTED OTHERWISE. HORIZONTAL BENDS NOT SHOWN ARE TO BE PROVIDED AT NO EXTRA COST.

E PVI CHANGES MAY NOT REQUIRE FITTINGS. CHECK USABLE PIPE BEND RADIUS. USABLE PIPE BEND RADIUS NOT TO EXCEED 75% OF MANUFACTURERS RECOMMENDED ALLOWABLE.

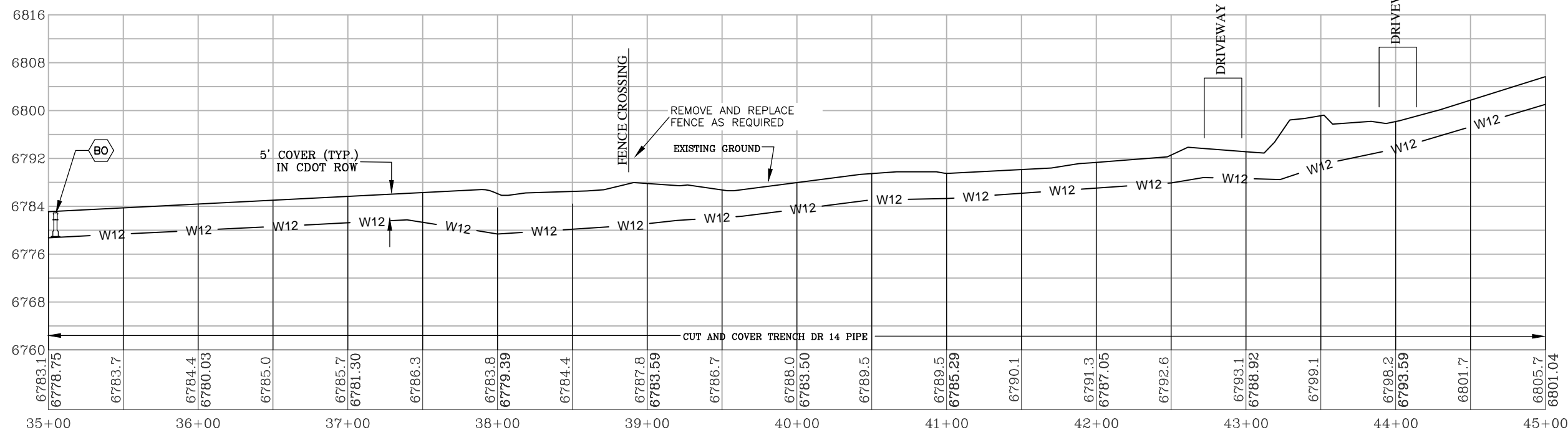
F ALL LEGS OF WATER LINES AT VALVES SHALL HAVE MECHANICAL JOINT RESTRAINT (MJR) IN THE FORM OF MEGALUG 2000 SERIES PV MJR.

G CUTS WITHIN 4ft. OF EDGE OF ROAD TO BE FLOW FILLED TO WITHIN 6" OF TOP THEN 6" OF CLASS 6 AT 95% COMPACTION OR BACKFILLED WITH CLASS 6 ENTIRE DEPTH IN 12" LIFTS AT 95% COMPACTION VERIFIED BY TESTING.

H CUTS IN ROAD SURFACE SHALL BE FLOW FILLED TO WITHIN 8" OF TOP SURFACE. THEN MATCH LPC STANDARDS OF COMPACTED ROAD BASE WITH MAG CHLORIDE FOR TOP 8".

LEGEND

	WATER VALVE
	FENCE
	GUARD RAIL
	OVERHEAD POWERLINE
	GAS LINE
	UNDERGROUND TELEPHONE
	EXISTING WATERLINE
	UNDERGROUND ELECTRIC
	WETLANDS
	PROPOSED WATERLINE WITH SIZE SHOWN BY LINETYPE
	FIBER OPTIC MARKER
	TELEPHONE PEDESTAL
	POWER POLE
	TRAUTNER BORING HOLE WITH BORE NUMBER ABOVE
	PROPOSED CDOT ROADWAY
	TREE - CONIFER
	TREE - DECIDUOUS



24x36 SCALE: 1" = 10'
 11x17 SCALE: 1" = 20'

24x36 SCALE: 1" = 40'
 11x17 SCALE: 1" = 80'

ELEVATIONS DERIVED FROM COUNTY GIS MAPS AND ARE FOR INFORMATIONAL PURPOSES ONLY. FIELD CONDITIONS MAY VARY.



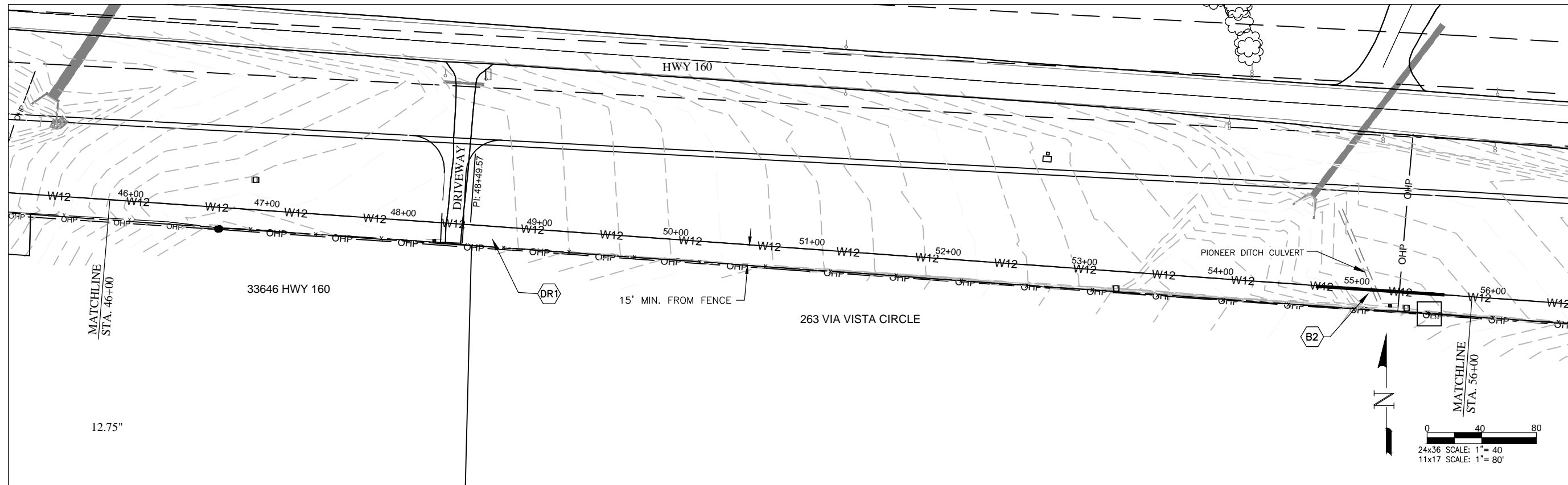
LA PLATA ARCHULETA WATER DISTRICT
PHASE 1F WATER PIPELINE
PLAN AND PROFILE

CALL UTILITY NOTIFICATION
 CENTER OF COLORADO
 1-800-922-1987 OR (811)
 CALL 3 BUSINESS DAYS PRIOR
 TO ANY CONSTRUCTION.

HARRIS WATER ENGINEERING INC.
 954 East Second Ave.
 Durango, Co. 81303
 970-259-1028

DATE: 4/10/2017
 REV 1 DATE: 5/9/2017
 DRAWN BY: MG
 CHECKED BY: BS

SHEET
 04 OF 14



KEY NOTES
 "CONTRACTOR TO VERIFY TAP SIZE AND LOCATION PRIOR TO INSTALL AT ALL PLACEMENTS SHOWN. SERVICE TAP LOCATIONS, QUANTITIES AND SIZES ARE SUBJECT TO CHANGE."

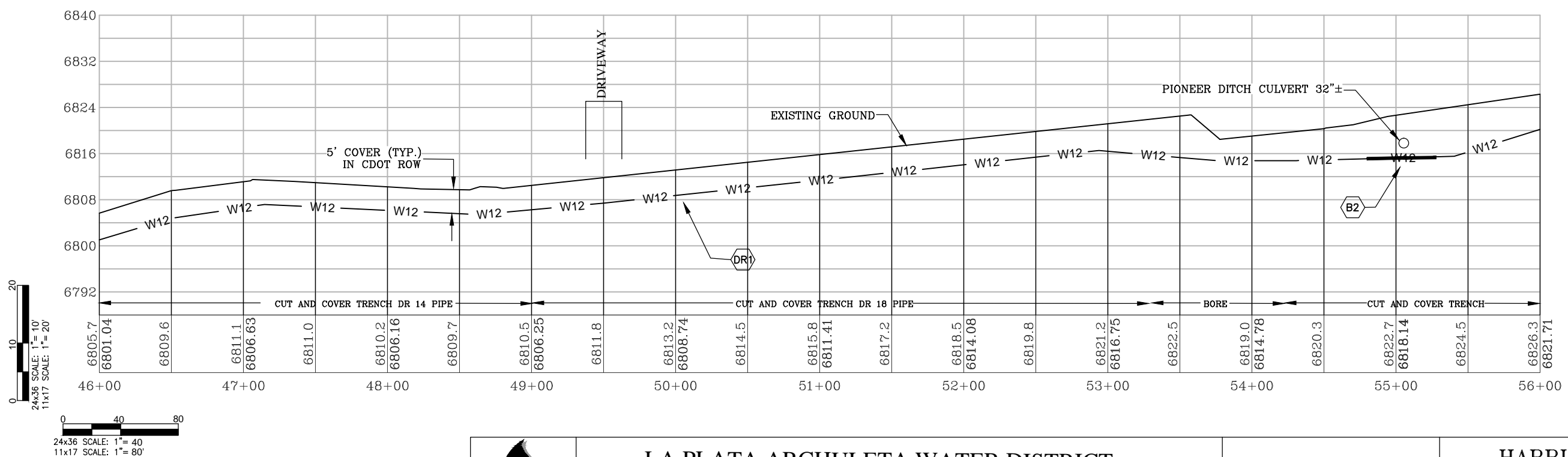
- (DR1) PIPE TRANSITION, ALL PIPE BELOW 6810.0' SHALL BE CLASS 225 (DR14 FOR C-900 PVC).
- (B2) BORE UNDER PIONEER DITCH CULVERT WITH 12" LINE IN SLEEVE PER STANDARD DETAILS SHEET 10

GENERAL NOTES

- A ELEVATIONS SHOWN ARE APPROXIMATE AND MAY NOT BE ACCURATE AT TIME OF CONSTRUCTION.
- B STATIONING WILL BE SUBJECT TO ACTUAL FIELD CONDITIONS AND MAY VARY FROM THAT SHOWN.
- C CONTACT LPEA PRIOR TO WORK IF EXCAVATING WITHIN 5 FEET OF POWER POLES. MAINTAIN 5 FOOT SEPARATION BETWEEN POWER POLE AND WATERLINE.
- D ALL FITTINGS ARE STANDARD UNLESS NOTED OTHERWISE. HORIZONTAL BENDS NOT SHOWN ARE TO BE PROVIDED AT NO EXTRA COST.
- E PVI CHANGES MAY NOT REQUIRE FITTINGS, CHECK USABLE PIPE BEND RADIUS. USABLE PIPE BEND RADIUS NOT TO EXCEED 75% OF MANUFACTURERS RECOMMENDED ALLOWABLE.
- F ALL LEGS OF WATER LINES AT VALVES SHALL HAVE MECHANICAL JOINT RESTRAINT (MJR) IN THE FORM OF MEGALUG 2000 SERIES PV MJR.
- G CUTS WITHIN 4ft. OF EDGE OF ROAD TO BE FLOW FILLED TO WITHIN 6" OF TOP THEN 6" OF CLASS 6 AT 95% COMPACTION OR BACKFILLED WITH CLASS 6 ENTIRE DEPTH IN 12" LIFTS AT 95% COMPACTION VERIFIED BY TESTING.
- H CUTS IN ROAD SURFACE SHALL BE FLOW FILLED TO WITHIN 8" OF TOP SURFACE. THEN MATCH LPC STANDARDS OF COMPACTED ROAD BASE WITH MAG CHLORIDE FOR TOP 8".

LEGEND

- WV WATER VALVE
- FENCE
- GUARD RAIL
- OHP OVERHEAD POWERLINE
- GAS GAS LINE
- TEL UNDERGROUND TELEPHONE
- EWL EXISTING WATERLINE
- UGE UNDERGROUND ELECTRIC
- WETLANDS
- PROPOSED WATERLINE WITH SIZE SHOWN BY LINETYPE
- FO FIBER OPTIC MARKER
- TP TELEPHONE PEDESTAL
- PP POWER POLE
- TBH TRAUTNER BORING HOLE WITH BORE NUMBER ABOVE
- PROPOSED CDOT ROADWAY
- ★ TREE - CONIFER
- ☼ TREE - DECIDUOUS



24x36 SCALE: 1" = 10'
 11x17 SCALE: 1" = 20'

24x36 SCALE: 1" = 40'
 11x17 SCALE: 1" = 80'

ELEVATIONS DERIVED FROM COUNTY GIS MAPS AND ARE FOR INFORMATIONAL PURPOSES ONLY. FIELD CONDITIONS MAY VARY.

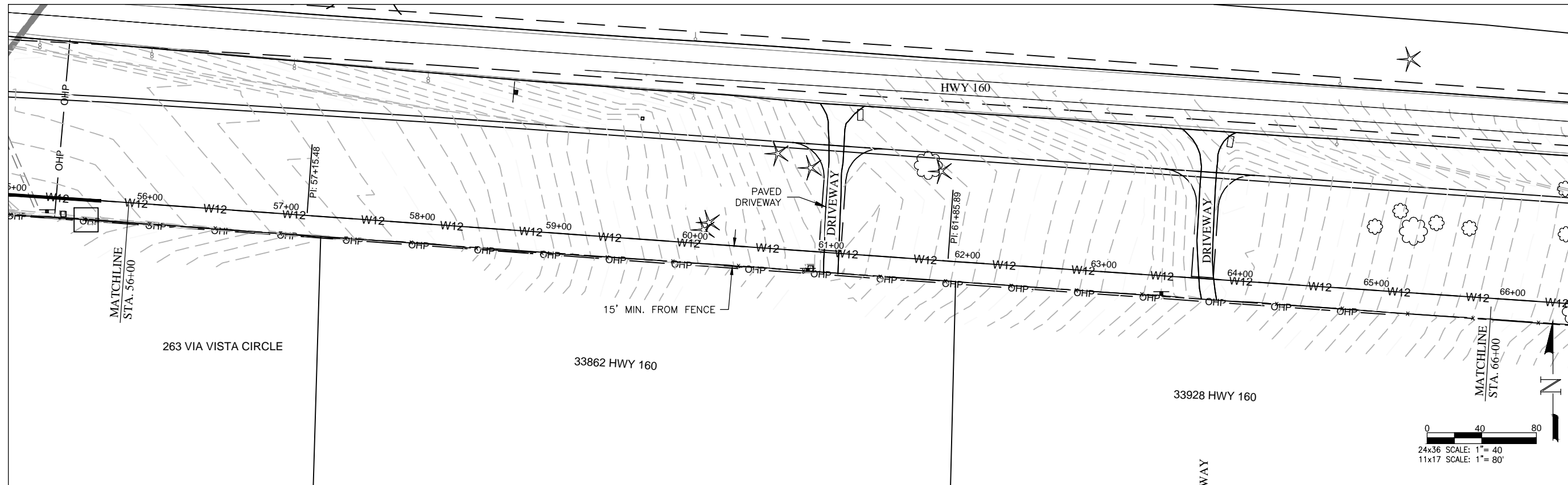


LA PLATA ARCHULETA WATER DISTRICT
PHASE 1F WATER PIPELINE
PLAN AND PROFILE

CALL UTILITY NOTIFICATION
 CENTER OF COLORADO
 1-800-922-1987 OR (811)
 CALL 3 BUSINESS DAYS PRIOR
 TO ANY CONSTRUCTION.

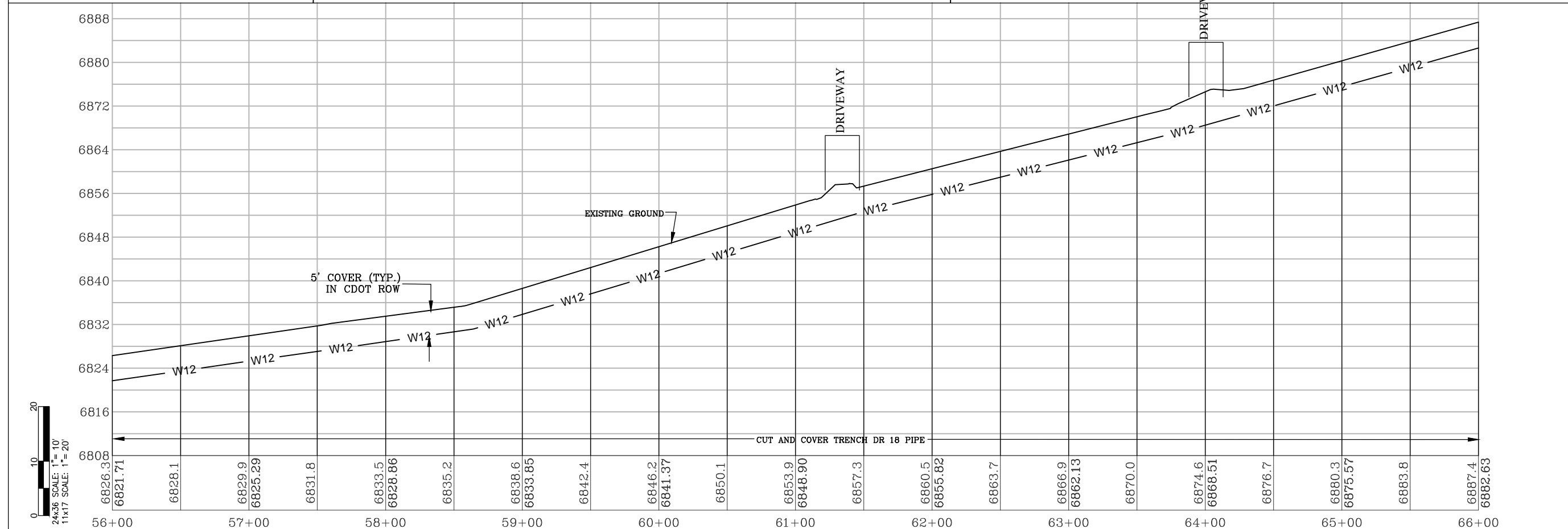
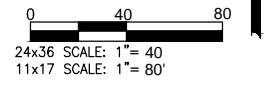
HARRIS WATER ENGINEERING INC.
 954 East Second Ave.
 Durango, Co. 81303
 970-259-1028

DATE: 4/10/2017
 REV 1 DATE: 5/9/2017
 DRAWN BY: MG
 CHECKED BY: BS



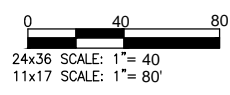
KEY NOTES
 "CONTRACTOR TO VERIFY TAP SIZE AND LOCATION PRIOR TO INSTALL AT ALL PLACEMENTS SHOWN. SERVICE TAP LOCATIONS, QUANTITIES AND SIZES ARE SUBJECT TO CHANGE."

- GENERAL NOTES**
- A ELEVATIONS SHOWN ARE APPROXIMATE AND MAY NOT BE ACCURATE AT TIME OF CONSTRUCTION.
 - B STATIONING WILL BE SUBJECT TO ACTUAL FIELD CONDITIONS AND MAY VARY FROM THAT SHOWN.
 - C CONTACT LPEA PRIOR TO WORK IF EXCAVATING WITHIN 5 FEET OF POWER POLES. MAINTAIN 5 FOOT SEPARATION BETWEEN POWER POLE AND WATERLINE.
 - D ALL FITTINGS ARE STANDARD UNLESS NOTED OTHERWISE. HORIZONTAL BENDS NOT SHOWN ARE TO BE PROVIDED AT NO EXTRA COST.
 - E PVI CHANGES MAY NOT REQUIRE FITTINGS, CHECK USABLE PIPE BEND RADIUS. USABLE PIPE BEND RADIUS NOT TO EXCEED 75% OF MANUFACTURERS RECOMMENDED ALLOWABLE.
 - F ALL LEGS OF WATER LINES AT VALVES SHALL HAVE MECHANICAL JOINT RESTRAINT (MJR) IN THE FORM OF MEGALUG 2000 SERIES PV MR.
 - G CUTS WITHIN 4ft. OF EDGE OF ROAD TO BE FLOW FILLED TO WITHIN 6" OF TOP THEN 6" OF CLASS 6 AT 95% COMPACTION OR BACKFILLED WITH CLASS 6 ENTIRE DEPTH IN 12" LIFTS AT 95% COMPACTION VERIFIED BY TESTING.
 - H CUTS IN ROAD SURFACE SHALL BE FLOW FILLED TO WITHIN 8" OF TOP SURFACE. THEN MATCH LPC STANDARDS OF COMPACTED ROAD BASE WITH MAG CHLORIDE FOR TOP 8".



LEGEND

	WATER VALVE
	FENCE
	GUARD RAIL
	OVERHEAD POWERLINE
	GAS LINE
	UNDERGROUND TELEPHONE
	EXISTING WATERLINE
	UNDERGROUND ELECTRIC
	WETLANDS
	PROPOSED WATERLINE WITH SIZE SHOWN BY LINETYPE
	FIBER OPTIC MARKER
	TELEPHONE PEDESTAL
	POWER POLE
	TRAUTNER BORING HOLE WITH BORE NUMBER ABOVE
	PROPOSED CDOT ROADWAY
	TREE - CONIFER
	TREE - DECIDUOUS



ELEVATIONS DERIVED FROM COUNTY GIS MAPS AND ARE FOR INFORMATIONAL PURPOSES ONLY. FIELD CONDITIONS MAY VARY.

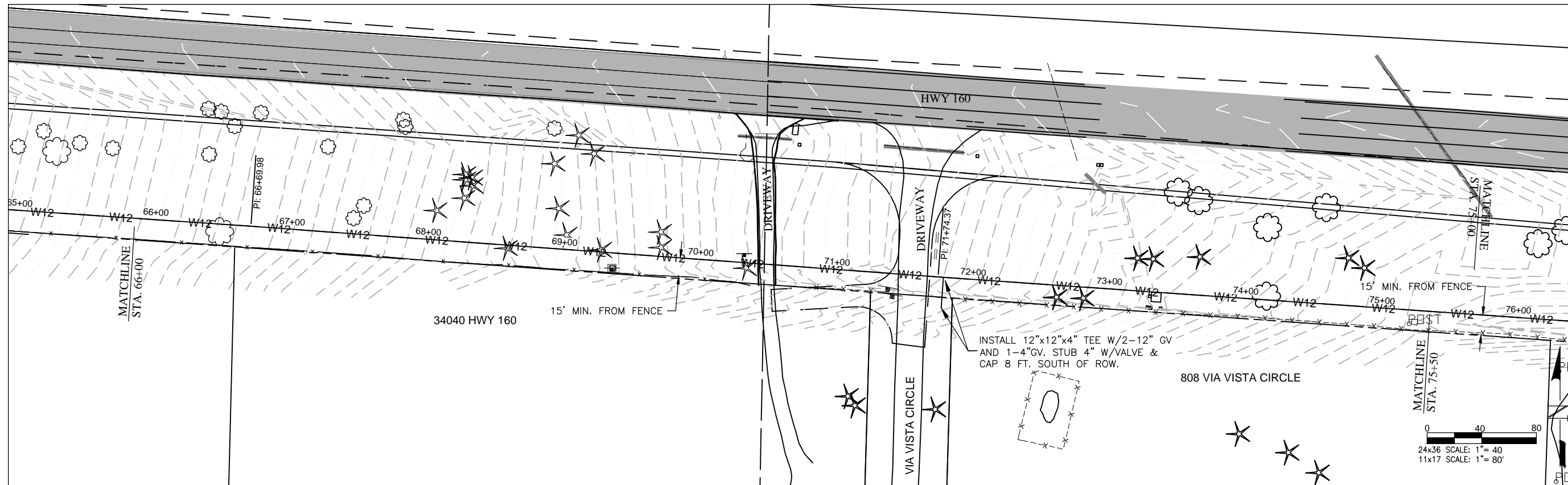


**LA PLATA ARCHULETA WATER DISTRICT
 PHASE 1F WATER PIPELINE
 PLAN AND PROFILE**

CALL UTILITY NOTIFICATION
 CENTER OF COLORADO
 1-800-922-1987 OR (811)
 CALL 3 BUSINESS DAYS PRIOR
 TO ANY CONSTRUCTION.

**HARRIS WATER
 ENGINEERING INC.**
 954 East Second Ave.
 Durango, Co. 81303
 970-259-1028

DATE: 4/10/2017
 REV 1 DATE: 5/9/2017
 DRAWN BY: MG
 CHECKED BY: BS
 SHEET
 06 OF 14

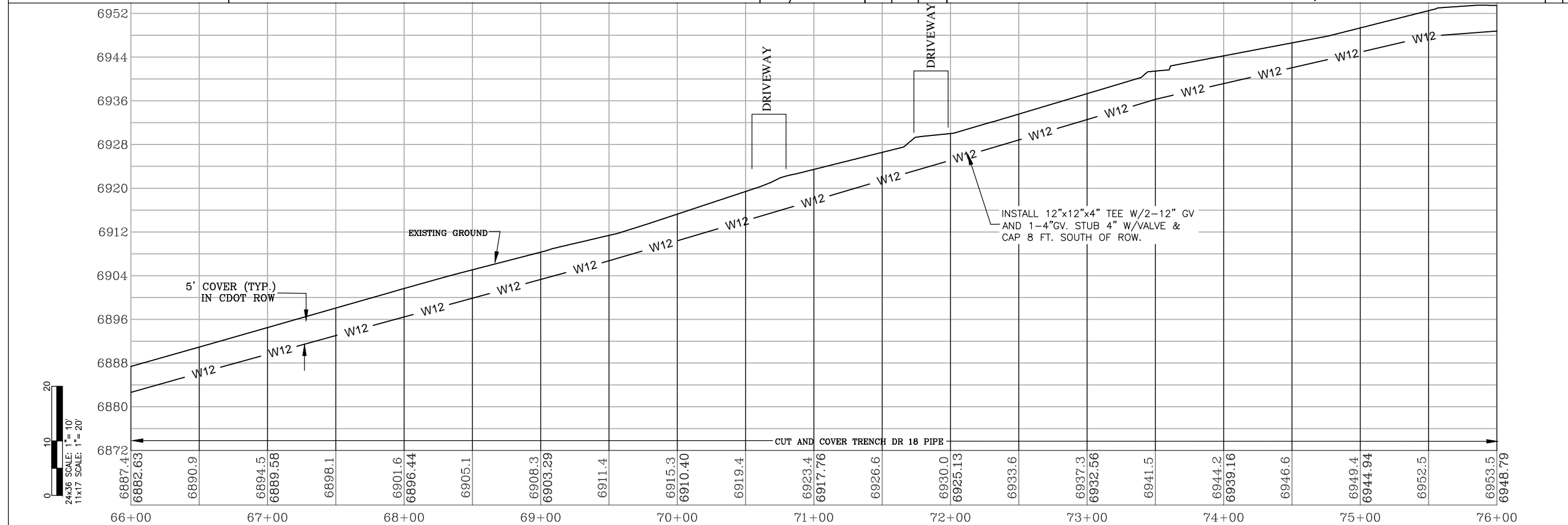


KEY NOTES

"CONTRACTOR TO VERIFY TAP SIZE AND LOCATION PRIOR TO INSTALL AT ALL PLACEMENTS SHOWN. SERVICE TAP LOCATIONS, QUANTITIES AND SIZES ARE SUBJECT TO CHANGE."

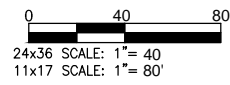
GENERAL NOTES

- A ELEVATIONS SHOWN ARE APPROXIMATE AND MAY NOT BE ACCURATE AT TIME OF CONSTRUCTION.
- B STATIONING WILL BE SUBJECT TO ACTUAL FIELD CONDITIONS AND MAY VARY FROM THAT SHOWN.
- C CONTACT LPEA PRIOR TO WORK IF EXCAVATING WITHIN 5 FEET OF POWER POLES. MAINTAIN 5 FOOT SEPARATION BETWEEN POWER POLE AND WATERLINE.
- D ALL FITTINGS ARE STANDARD UNLESS NOTED OTHERWISE. HORIZONTAL BENDS NOT SHOWN ARE TO BE PROVIDED AT NO EXTRA COST.
- E PVI CHANGES MAY NOT REQUIRE FITTINGS, CHECK USABLE PIPE BEND RADIUS. USABLE PIPE BEND RADIUS NOT TO EXCEED 75% OF MANUFACTURERS RECOMMENDED ALLOWABLE.
- F ALL LEGS OF WATER LINES AT VALVES SHALL HAVE MECHANICAL JOINT RESTRAINT (MJR) IN THE FORM OF MEGALUG 2000 SERIES PV MJR.
- G CUTS WITHIN 4ft. OF EDGE OF ROAD TO BE FLOW FILLED TO WITHIN 6" OF TOP THEN 6" OF CLASS 6 AT 95% COMPACTION OR BACKFILLED WITH CLASS 6 ENTIRE DEPTH IN 12" LIFTS AT 95% COMPACTION VERIFIED BY TESTING.
- H CUTS IN ROAD SURFACE SHALL BE FLOW FILLED TO WITHIN 8" OF TOP SURFACE. THEN MATCH LPC STANDARDS OF COMPACTED ROAD BASE WITH MAG CHLORIDE FOR TOP 8".



LEGEND

	WATER VALVE
	FENCE
	GUARD RAIL
	OVERHEAD POWERLINE
	GAS LINE
	UNDERGROUND TELEPHONE
	EXISTING WATERLINE
	UNDERGROUND ELECTRIC
	WETLANDS
	PROPOSED WATERLINE WITH SIZE SHOWN BY LINETYPE
	FIBER OPTIC MARKER
	TELEPHONE PEDESTAL
	POWER POLE
	TRAUTNER BORING HOLE WITH BORE NUMBER ABOVE
	PROPOSED CDOT ROADWAY
	TREE - CONIFER
	TREE - DECIDUOUS



ELEVATIONS DERIVED FROM COUNTY GIS MAPS AND ARE FOR INFORMATIONAL PURPOSES ONLY. FIELD CONDITIONS MAY VARY.

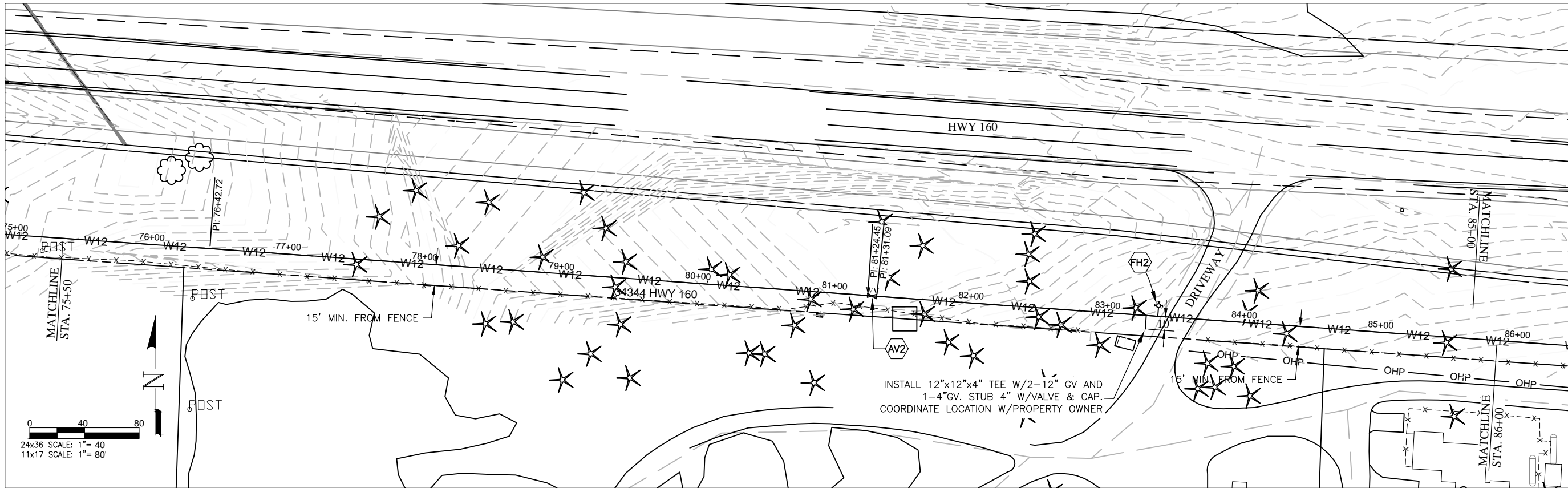


LA PLATA ARCHULETA WATER DISTRICT
PHASE 1F WATER PIPELINE
PLAN AND PROFILE

CALL UTILITY NOTIFICATION
 CENTER OF COLORADO
 1-800-922-1987 OR (811)
 CALL 3 BUSINESS DAYS PRIOR
 TO ANY CONSTRUCTION.

HARRIS WATER ENGINEERING INC.
 954 East Second Ave.
 Durango, Co. 81303
 970-259-1028

DATE: 4/10/2017
 REV 1 DATE: 5/9/2017
 DRAWN BY: MG
 CHECKED BY: BS
 SHEET
 07 OF 14

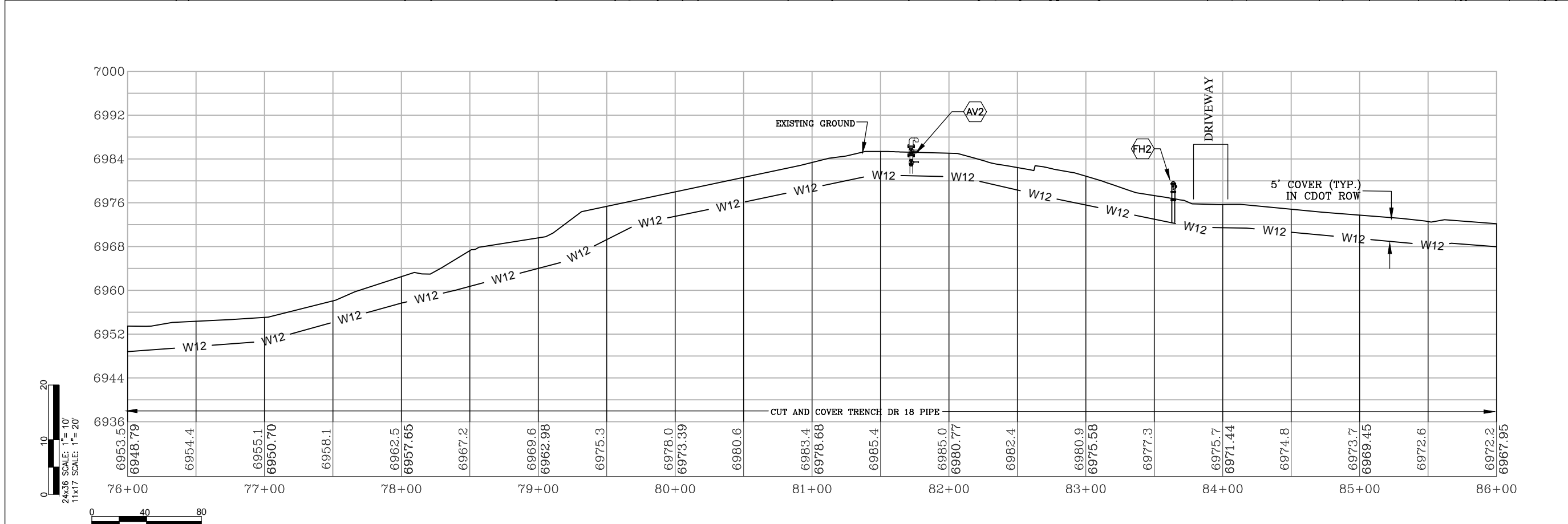


KEY NOTES
 "CONTRACTOR TO VERIFY TAP SIZE AND LOCATION PRIOR TO INSTALL AT ALL PLACEMENTS SHOWN. SERVICE TAP LOCATIONS, QUANTITIES AND SIZES ARE SUBJECT TO CHANGE."

- AV2** INSTALL AIR VAC AT HIGH POINT PER STANDARD DETAILS SHEET 11.
- FH2** INSTALL FIRE HYDRANT OFF 12" MAIN PER STANDARD DETAILS SHEET 8.

GENERAL NOTES

- A** ELEVATIONS SHOWN ARE APPROXIMATE AND MAY NOT BE ACCURATE AT TIME OF CONSTRUCTION.
- B** STATIONING WILL BE SUBJECT TO ACTUAL FIELD CONDITIONS AND MAY VARY FROM THAT SHOWN.
- C** CONTACT LPEA PRIOR TO WORK IF EXCAVATING WITHIN 5 FEET OF POWER POLES. MAINTAIN 5 FOOT SEPARATION BETWEEN POWER POLE AND WATERLINE.
- D** ALL FITTINGS ARE STANDARD UNLESS NOTED OTHERWISE. HORIZONTAL BENDS NOT SHOWN ARE TO BE PROVIDED AT NO EXTRA COST.
- E** PVI CHANGES MAY NOT REQUIRE FITTINGS. CHECK USABLE PIPE BEND RADIUS. USABLE PIPE BEND RADIUS NOT TO EXCEED 75% OF MANUFACTURERS RECOMMENDED ALLOWABLE.
- F** ALL LEGS OF WATER LINES AT VALVES SHALL HAVE MECHANICAL JOINT RESTRAINT (MJR) IN THE FORM OF MEGALUG 2000 SERIES PV MR.
- G** CUTS WITHIN 4ft. OF EDGE OF ROAD TO BE FLOW FILLED TO WITHIN 6" OF TOP THEN 6" OF CLASS 6 AT 95% COMPACTION OR BACKFILLED WITH CLASS 6 ENTIRE DEPTH IN 12" LIFTS AT 95% COMPACTION VERIFIED BY TESTING.
- H** CUTS IN ROAD SURFACE SHALL BE FLOW FILLED TO WITHIN 8" OF TOP SURFACE. THEN MATCH LPC STANDARDS OF COMPACTED ROAD BASE WITH MAG CHLORIDE FOR TOP 8".



- LEGEND**
- WATER VALVE
 - FENCE
 - GUARD RAIL
 - OVERHEAD POWERLINE
 - GAS LINE
 - UNDERGROUND TELEPHONE
 - EXISTING WATERLINE
 - UNDERGROUND ELECTRIC
 - WETLANDS
 - PROPOSED WATERLINE WITH SIZE SHOWN BY LINETYPE
 - FIBER OPTIC MARKER
 - TELEPHONE PEDESTAL
 - POWER POLE
 - TRAUTNER BORING HOLE WITH BORE NUMBER ABOVE
 - PROPOSED CDOT ROADWAY
 - TREE - CONIFER
 - TREE - DECIDUOUS

ELEVATIONS DERIVED FROM COUNTY GIS MAPS AND ARE FOR INFORMATIONAL PURPOSES ONLY. FIELD CONDITIONS MAY VARY.

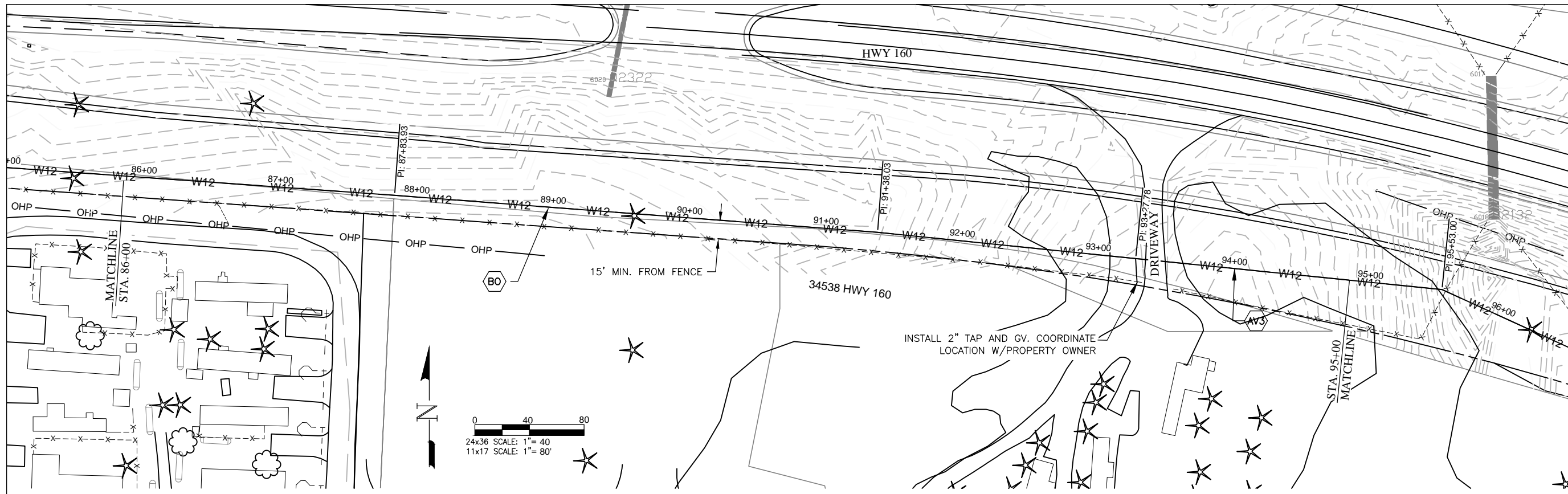


LA PLATA ARCHULETA WATER DISTRICT
PHASE 1F WATER PIPELINE
PLAN AND PROFILE

CALL UTILITY NOTIFICATION
 CENTER OF COLORADO
 1-800-922-1987 OR (811)
 CALL 3 BUSINESS DAYS PRIOR
 TO ANY CONSTRUCTION.

HARRIS WATER ENGINEERING INC.
 954 East Second Ave.
 Durango, Co. 81303
 970-259-1028

DATE: 4/10/2017
 REV 1 DATE: 5/9/2017
 DRAWN BY: MG
 CHECKED BY: BS
 SHEET
 08 OF 14

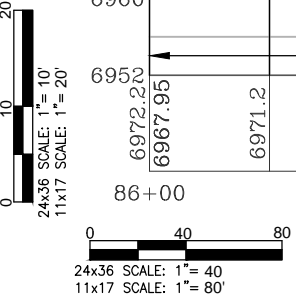
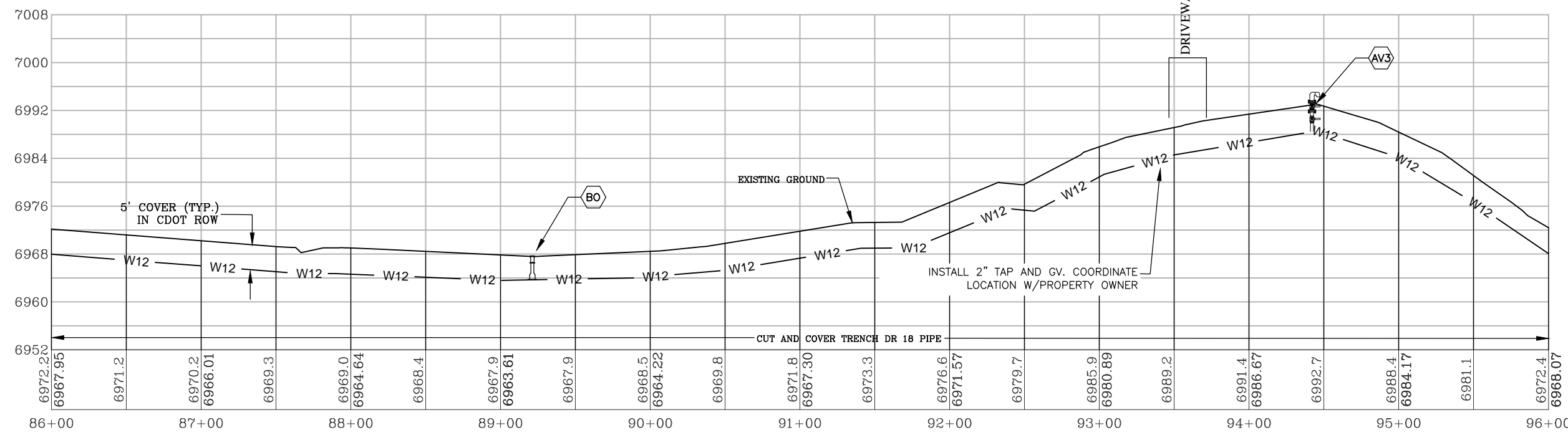
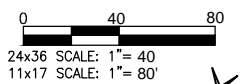


KEY NOTES
 "CONTRACTOR TO VERIFY TAP SIZE AND LOCATION PRIOR TO INSTALL AT ALL PLACEMENTS SHOWN. SERVICE TAP LOCATIONS, QUANTITIES AND SIZES ARE SUBJECT TO CHANGE."

- AV3 INSTALL AIR VAC AT HIGH POINT PER STANDARD DETAILS SHEET 11.
- BO INSTALL TYPE B BLOWOFF VALVE PER STANDARD DETAILS SHEET 13.

GENERAL NOTES

- A ELEVATIONS SHOWN ARE APPROXIMATE AND MAY NOT BE ACCURATE AT TIME OF CONSTRUCTION.
- B STATIONING WILL BE SUBJECT TO ACTUAL FIELD CONDITIONS AND MAY VARY FROM THAT SHOWN.
- C CONTACT LPEA PRIOR TO WORK IF EXCAVATING WITHIN 5 FEET OF POWER POLES. MAINTAIN 5 FOOT SEPARATION BETWEEN POWER POLE AND WATERLINE.
- D ALL FITTINGS ARE STANDARD UNLESS NOTED OTHERWISE. HORIZONTAL BENDS NOT SHOWN ARE TO BE PROVIDED AT NO EXTRA COST.
- E PVI CHANGES MAY NOT REQUIRE FITTINGS, CHECK USABLE PIPE BEND RADIUS. USABLE PIPE BEND RADIUS NOT TO EXCEED 75% OF MANUFACTURERS RECOMMENDED ALLOWABLE.
- F ALL LEGS OF WATER LINES AT VALVES SHALL HAVE MECHANICAL JOINT RESTRAINT (MJR) IN THE FORM OF MEGALUG 2000 SERIES PV MJR.
- G CUTS WITHIN 4ft. OF EDGE OF ROAD TO BE FLOW FILLED TO WITHIN 6" OF TOP THEN 6" OF CLASS 6 AT 95% COMPACTION OR BACKFILLED WITH CLASS 6 ENTIRE DEPTH IN 12" LIFTS AT 95% COMPACTION VERIFIED BY TESTING.
- H CUTS IN ROAD SURFACE SHALL BE FLOW FILLED TO WITHIN 8" OF TOP SURFACE. THEN MATCH LPC STANDARDS OF COMPACTED ROAD BASE WITH MAG CHLORIDE FOR TOP 8".



- LEGEND**
- WV WATER VALVE
 - FENCE
 - GUARD RAIL
 - OHP OVERHEAD POWERLINE
 - GAS GAS LINE
 - TEL UNDERGROUND TELEPHONE
 - EWL EXISTING WATERLINE
 - UGE UNDERGROUND ELECTRIC
 - WETLANDS
 - PROPOSED WATERLINE WITH SIZE SHOWN BY LINETYPE
 - FO FIBER OPTIC MARKER
 - TP TELEPHONE PEDESTAL
 - PP POWER POLE
 - TB TRAUTNER BORING HOLE WITH BORE NUMBER ABOVE
 - PROPOSED CDOT ROADWAY
 - ★ TREE - CONIFER
 - ☼ TREE - DECIDUOUS

ELEVATIONS DERIVED FROM COUNTY GIS MAPS AND ARE FOR INFORMATIONAL PURPOSES ONLY. FIELD CONDITIONS MAY VARY.

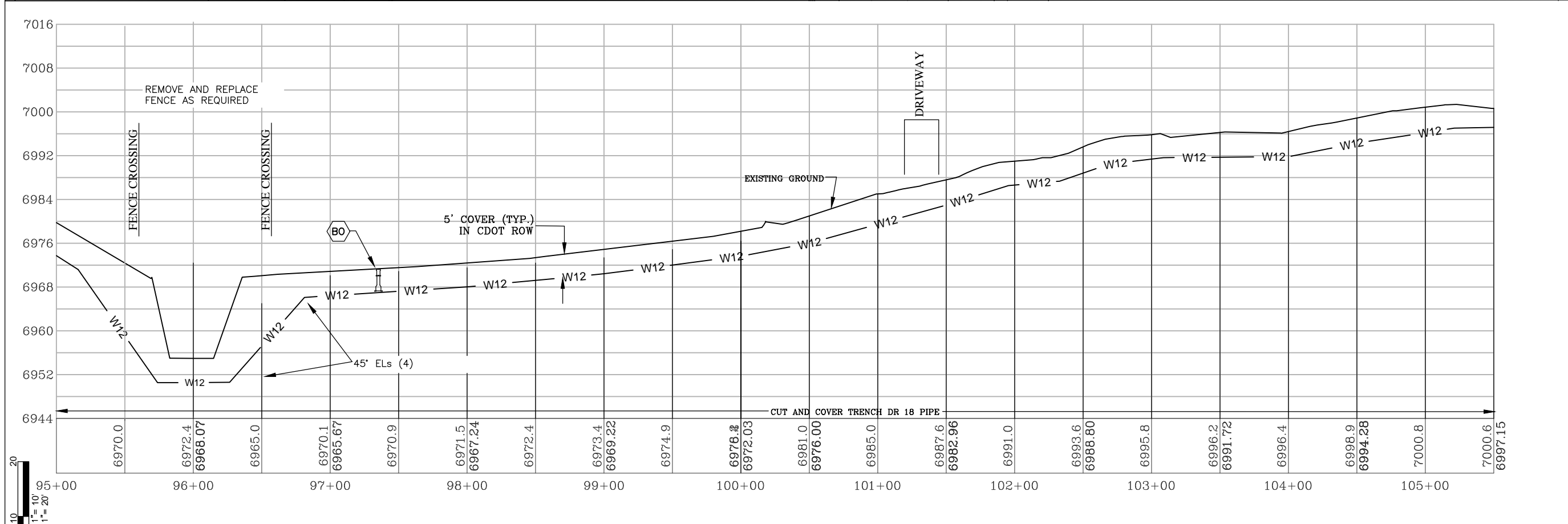
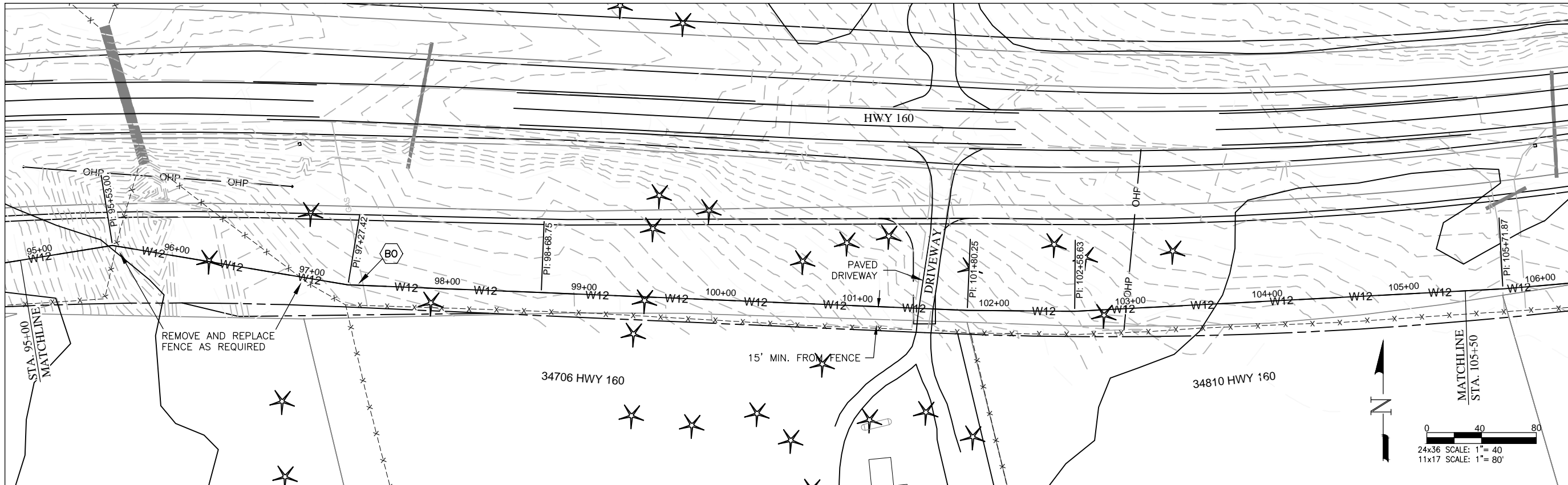


**LA PLATA ARCHULETA WATER DISTRICT
 PHASE 1F WATER PIPELINE
 PLAN AND PROFILE**

CALL UTILITY NOTIFICATION
 CENTER OF COLORADO
 1-800-922-1987 OR (811)
 CALL 3 BUSINESS DAYS PRIOR
 TO ANY CONSTRUCTION.

**HARRIS WATER
 ENGINEERING INC.**
 954 East Second Ave.
 Durango, Co. 81303
 970-259-1028

DATE: 4/10/2017
 REV 1 DATE: 5/9/2017
 DRAWN BY: MG
 CHECKED BY: BS



KEY NOTES
 "CONTRACTOR TO VERIFY TAP SIZE AND LOCATION PRIOR TO INSTALL AT ALL PLACEMENTS SHOWN. SERVICE TAP LOCATIONS, QUANTITIES AND SIZES ARE SUBJECT TO CHANGE."

BO INSTALL TYPE B BLOWOFF VALVE PER STANDARD DETAILS SHEET 13.

GENERAL NOTES

- A ELEVATIONS SHOWN ARE APPROXIMATE AND MAY NOT BE ACCURATE AT TIME OF CONSTRUCTION.
- B STATIONING WILL BE SUBJECT TO ACTUAL FIELD CONDITIONS AND MAY VARY FROM THAT SHOWN.
- C CONTACT LPEA PRIOR TO WORK IF EXCAVATING WITHIN 5 FEET OF POWER POLES. MAINTAIN 5 FOOT SEPARATION BETWEEN POWER POLE AND WATERLINE.
- D ALL FITTINGS ARE STANDARD UNLESS NOTED OTHERWISE. HORIZONTAL BENDS NOT SHOWN ARE TO BE PROVIDED AT NO EXTRA COST.
- E PVI CHANGES MAY NOT REQUIRE FITTINGS, CHECK USABLE PIPE BEND RADIUS. USABLE PIPE BEND RADIUS NOT TO EXCEED 75% OF MANUFACTURERS RECOMMENDED ALLOWABLE.
- F ALL LEGS OF WATER LINES AT VALVES SHALL HAVE MECHANICAL JOINT RESTRAINT (MJR) IN THE FORM OF MEGALUG 2000 SERIES PV MJR.
- G CUTS WITHIN 4ft. OF EDGE OF ROAD TO BE FLOW FILLED TO WITHIN 6" OF TOP THEN 6" OF CLASS 6 AT 95% COMPACTION OR BACKFILLED WITH CLASS 6 ENTIRE DEPTH IN 12" LIFTS AT 95% COMPACTION VERIFIED BY TESTING.
- H CUTS IN ROAD SURFACE SHALL BE FLOW FILLED TO WITHIN 8" OF TOP SURFACE. THEN MATCH LPC STANDARDS OF COMPACTED ROAD BASE WITH MAG CHLORIDE FOR TOP 8".

LEGEND

	WATER VALVE
	FENCE
	GUARD RAIL
	OVERHEAD POWERLINE
	GAS LINE
	UNDERGROUND TELEPHONE
	EXISTING WATERLINE
	UNDERGROUND ELECTRIC
	WETLANDS
	PROPOSED WATERLINE WITH SIZE SHOWN BY LINETYPE
	FIBER OPTIC MARKER
	TELEPHONE PEDESTAL
	POWER POLE
	TRAUTNER BORING HOLE WITH BORE NUMBER ABOVE
	PROPOSED CDOT ROADWAY
	TREE - CONIFER
	TREE - DECIDUOUS

ELEVATIONS DERIVED FROM COUNTY GIS MAPS AND ARE FOR INFORMATIONAL PURPOSES ONLY. FIELD CONDITIONS MAY VARY.

24x36 SCALE: 1" = 40'
 11x17 SCALE: 1" = 80'



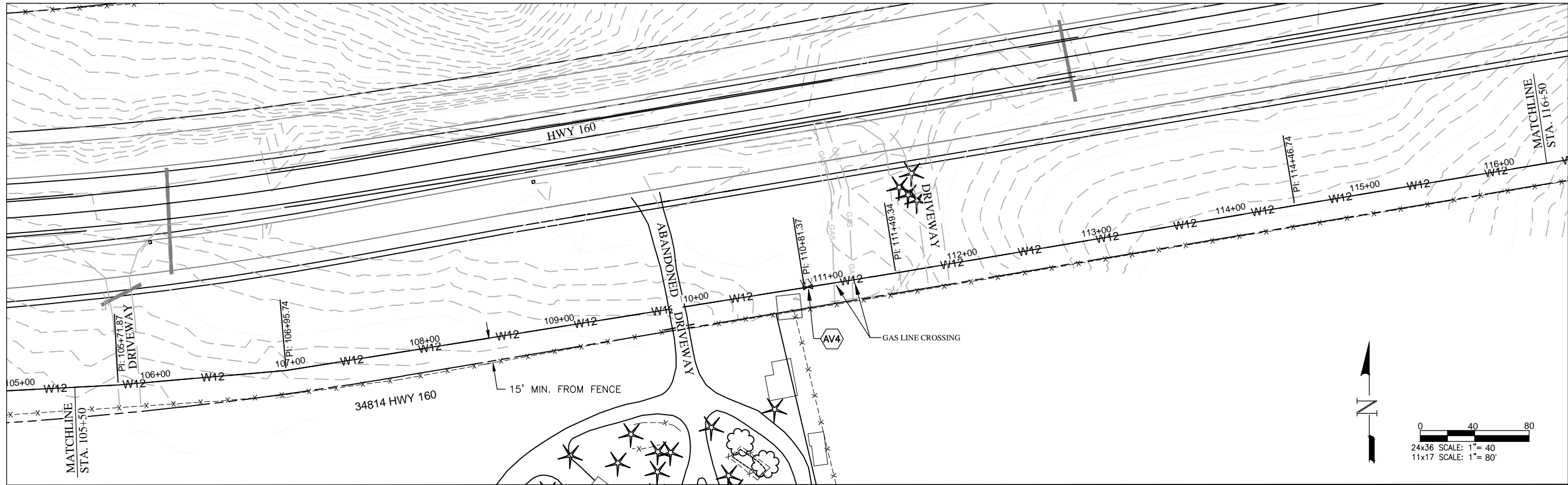
**LA PLATA ARCHULETA WATER DISTRICT
 PHASE 1F WATER PIPELINE
 PLAN AND PROFILE**

CALL UTILITY NOTIFICATION
 CENTER OF COLORADO
 1-800-922-1987 OR (811)
 CALL 3 BUSINESS DAYS PRIOR
 TO ANY CONSTRUCTION.

HARRIS WATER ENGINEERING INC.
 954 East Second Ave.
 Durango, Co. 81303
 970-259-1028

DATE: 4/10/2017
 REV 1 DATE: 5/9/2017
 DRAWN BY: MG
 CHECKED BY: BS

SHEET
 10 OF 14

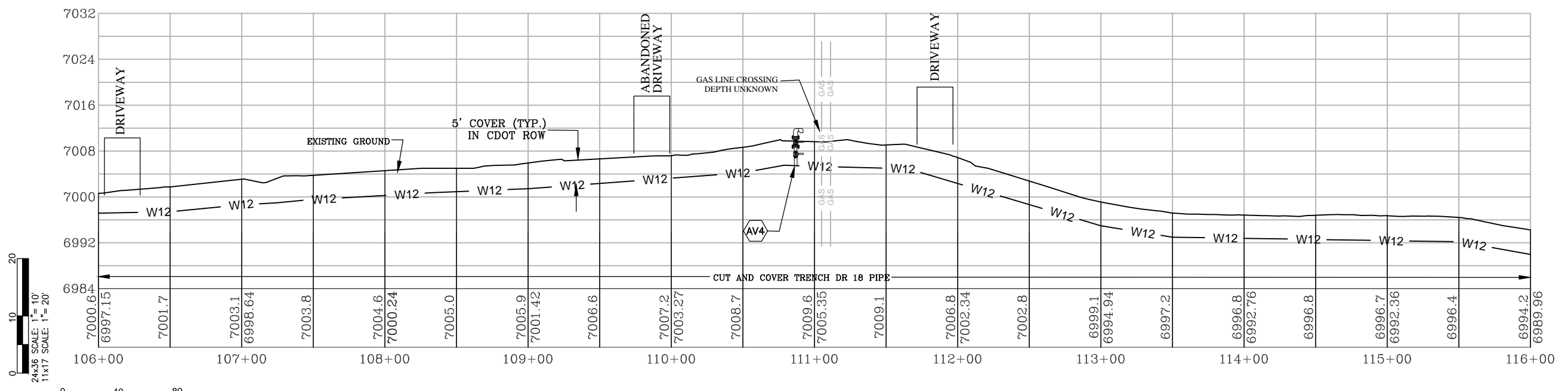
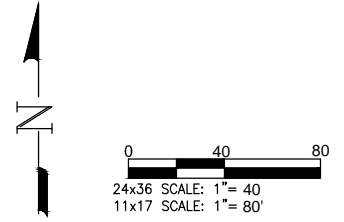


KEY NOTES

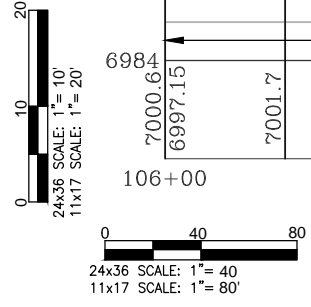
"CONTRACTOR TO VERIFY TAP SIZE AND LOCATION PRIOR TO INSTALL AT ALL PLACEMENTS SHOWN. SERVICE TAP LOCATIONS, QUANTITIES AND SIZES ARE SUBJECT TO CHANGE."

AV4 INSTALL AIR VAC AT HIGH POINT PER STANDARD DETAILS SHEET 11.

- GENERAL NOTES**
- A** ELEVATIONS SHOWN ARE APPROXIMATE AND MAY NOT BE ACCURATE AT TIME OF CONSTRUCTION.
 - B** STATIONING WILL BE SUBJECT TO ACTUAL FIELD CONDITIONS AND MAY VARY FROM THAT SHOWN.
 - C** CONTACT LPEA PRIOR TO WORK IF EXCAVATING WITHIN 5 FEET OF POWER POLES. MAINTAIN 5 FOOT SEPARATION BETWEEN POWER POLE AND WATERLINE.
 - D** ALL FITTINGS ARE STANDARD UNLESS NOTED OTHERWISE. HORIZONTAL BENDS NOT SHOWN ARE TO BE PROVIDED AT NO EXTRA COST.
 - E** PVI CHANGES MAY NOT REQUIRE FITTINGS, CHECK USABLE PIPE BEND RADIUS. USABLE PIPE BEND RADIUS NOT TO EXCEED 75% OF MANUFACTURERS RECOMMENDED ALLOWABLE.
 - F** ALL LEGS OF WATER LINES AT VALVES SHALL HAVE MECHANICAL JOINT RESTRAINT (MJR) IN THE FORM OF MEGALUG 2000 SERIES PV MR.
 - G** CUTS WITHIN 4ft. OF EDGE OF ROAD TO BE FLOW FILLED TO WITHIN 6" OF TOP THEN 6" OF CLASS 6 AT 95% COMPACTION OR BACKFILLED WITH CLASS 6 ENTIRE DEPTH IN 12" LIFTS AT 95% COMPACTION VERIFIED BY TESTING.
 - H** CUTS IN ROAD SURFACE SHALL BE FLOW FILLED TO WITHIN 8" OF TOP SURFACE. THEN MATCH LPC STANDARDS OF COMPACTED ROAD BASE WITH MAG CHLORIDE FOR TOP 8".



- LEGEND**
- WATER VALVE
 - FENCE
 - GUARD RAIL
 - OVERHEAD POWERLINE
 - GAS LINE
 - UNDERGROUND TELEPHONE
 - EXISTING WATERLINE
 - UNDERGROUND ELECTRIC
 - WETLANDS
 - PROPOSED WATERLINE WITH SIZE SHOWN BY LINETYPE
 - FIBER OPTIC MARKER
 - TELEPHONE PEDESTAL
 - POWER POLE
 - TRAUTNER BORING HOLE WITH BORE NUMBER ABOVE
 - PROPOSED CDOT ROADWAY
 - TREE - CONIFER
 - TREE - DECIDUOUS



ELEVATIONS DERIVED FROM COUNTY GIS MAPS AND ARE FOR INFORMATIONAL PURPOSES ONLY. FIELD CONDITIONS MAY VARY.



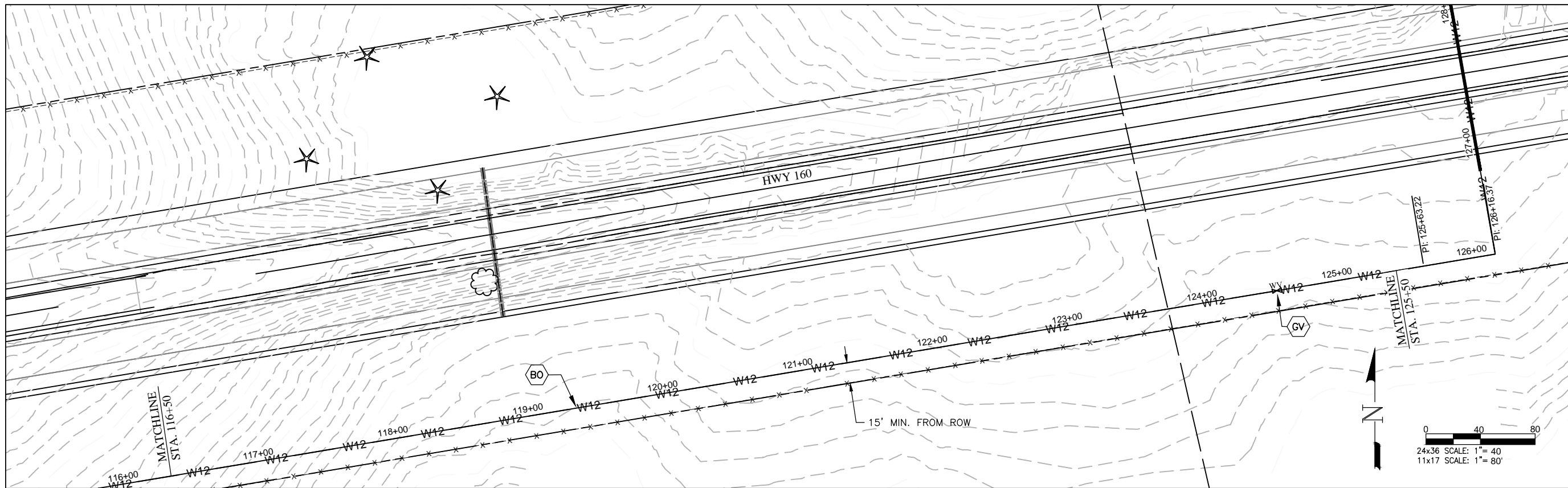
LA PLATA ARCHULETA WATER DISTRICT
PHASE 1F WATER PIPELINE
PLAN AND PROFILE

CALL UTILITY NOTIFICATION
 CENTER OF COLORADO
 1-800-922-1987 OR (811)
 CALL 3 BUSINESS DAYS PRIOR
 TO ANY CONSTRUCTION.

HARRIS WATER ENGINEERING INC.
 954 East Second Ave.
 Durango, Co. 81303
 970-259-1028

DATE: 4/10/2017
 REV 1 DATE: 5/9/2017
 DRAWN BY: MG
 CHECKED BY: BS

SHEET
 11 OF 14

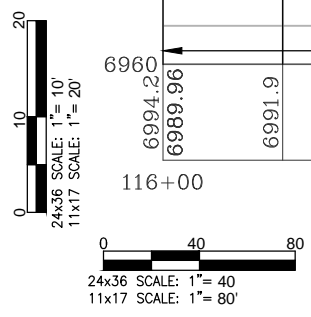
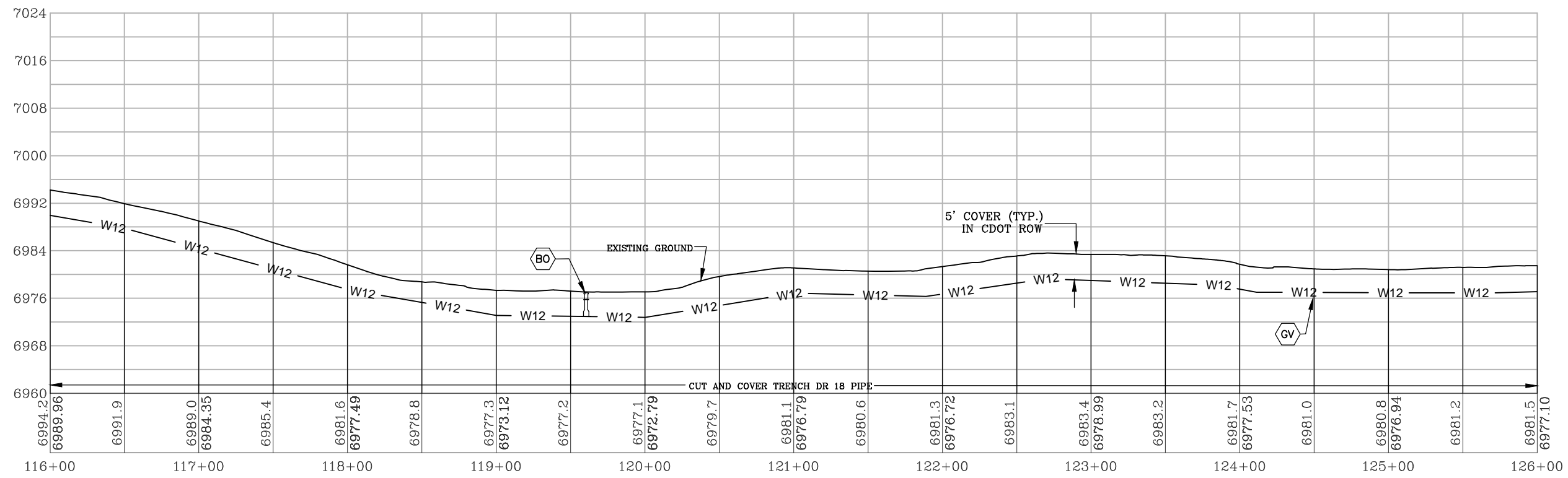
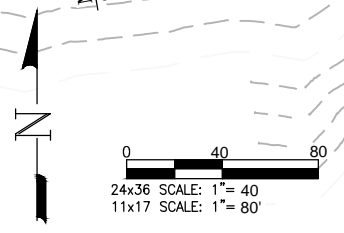


KEY NOTES
 CONTRACTOR TO VERIFY TAP SIZE AND LOCATION PRIOR TO INSTALL AT ALL PLACEMENTS SHOWN. SERVICE TAP LOCATIONS, QUANTITIES AND SIZES ARE SUBJECT TO CHANGE.

BO INSTALL TYPE B BLOWOFF VALVE PER STANDARD DETAILS SHEET 13.

GENERAL NOTES

- A** ELEVATIONS SHOWN ARE APPROXIMATE AND MAY NOT BE ACCURATE AT TIME OF CONSTRUCTION.
- B** STATIONING WILL BE SUBJECT TO ACTUAL FIELD CONDITIONS AND MAY VARY FROM THAT SHOWN.
- C** CONTACT LPEA PRIOR TO WORK IF EXCAVATING WITHIN 5 FEET OF POWER POLES. MAINTAIN 5 FOOT SEPARATION BETWEEN POWER POLE AND WATERLINE.
- D** ALL FITTINGS ARE STANDARD UNLESS NOTED OTHERWISE. HORIZONTAL BENDS NOT SHOWN ARE TO BE PROVIDED AT NO EXTRA COST.
- E** PVI CHANGES MAY NOT REQUIRE FITTINGS. CHECK USABLE PIPE BEND RADIUS. USABLE PIPE BEND RADIUS NOT TO EXCEED 75% OF MANUFACTURERS RECOMMENDED ALLOWABLE.
- F** ALL LEGS OF WATER LINES AT VALVES SHALL HAVE MECHANICAL JOINT RESTRAINT (MJR) IN THE FORM OF MEGALUG 2000 SERIES PV MJR.
- G** CUTS WITHIN 4ft. OF EDGE OF ROAD TO BE FLOW FILLED TO WITHIN 6" OF TOP THEN 6" OF CLASS 6 AT 95% COMPACTION OR BACKFILLED WITH CLASS 6 ENTIRE DEPTH IN 12" LIFTS AT 95% COMPACTION VERIFIED BY TESTING.
- H** CUTS IN ROAD SURFACE SHALL BE FLOW FILLED TO WITHIN 8" OF TOP SURFACE. THEN MATCH LPC STANDARDS OF COMPACTED ROAD BASE WITH MAG CHLORIDE FOR TOP 8".



LEGEND

	WATER VALVE
	FENCE
	GUARD RAIL
	OVERHEAD POWERLINE
	GAS LINE
	UNDERGROUND TELEPHONE
	EXISTING WATERLINE
	UNDERGROUND ELECTRIC
	WETLANDS
	PROPOSED WATERLINE WITH SIZE SHOWN BY LINETYPE
	FIBER OPTIC MARKER
	TELEPHONE PEDESTAL
	POWER POLE
	TRAUTNER BORING HOLE WITH BORE NUMBER ABOVE
	PROPOSED CDOT ROADWAY
	TREE - CONIFER
	TREE - DECIDUOUS

ELEVATIONS DERIVED FROM COUNTY GIS MAPS AND ARE FOR INFORMATIONAL PURPOSES ONLY. FIELD CONDITIONS MAY VARY.

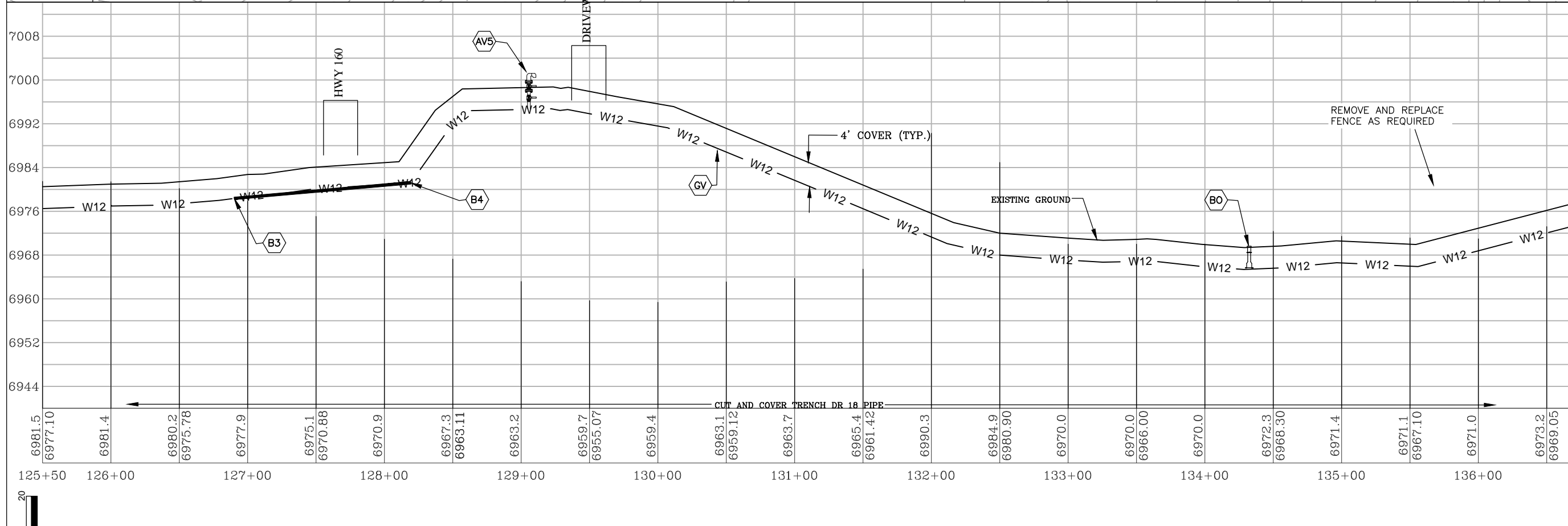
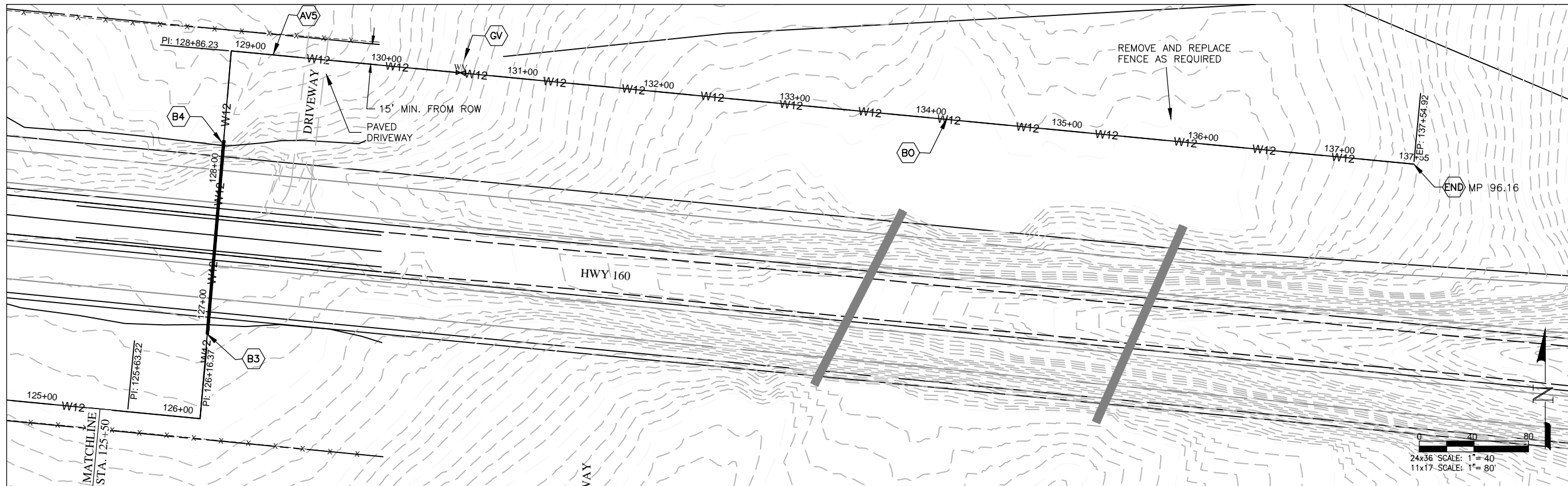


LA PLATA ARCHULETA WATER DISTRICT
PHASE 1F WATER PIPELINE
PLAN AND PROFILE

CALL UTILITY NOTIFICATION
 CENTER OF COLORADO
 1-800-922-1987 OR (811)
 CALL 3 BUSINESS DAYS PRIOR
 TO ANY CONSTRUCTION.

HARRIS WATER ENGINEERING INC.
 954 East Second Ave.
 Durango, Co. 81303
 970-259-1028

DATE: 4/10/2017
 REV 1 DATE: 5/9/2017
 DRAWN BY: MG
 CHECKED BY: BS



- KEY NOTES**
- "CONTRACTOR TO VERIFY TAP SIZE AND LOCATION PRIOR TO INSTALL AT ALL PLACEMENTS SHOWN. SERVICE TAP LOCATIONS, QUANTITIES AND SIZES ARE SUBJECT TO CHANGE."
 - B3 BORE UNDER HWY 160 WITH SLEEVE, MAINTAIN MINIMUM FO 5' OF COVER UNDER ROAD SURFACE PER STANDARD DETAILS SHEET 10.
 - GV INSTALL 12" GATE VALVE PER STANDARD DETAILS SHEET 6.
 - B4 END BORE SECTION
 - GV INSTALL 12" GATE VALVE PER STANDARD DETAILS SHEET 6.
 - END INSTALL 2" BLOW-OFF TYPE "A" PER STANDARD DETAILS SHEET 13. INSTALL FIBERGLASS MARKER AT END OF LINE.
 - B0 INSTALL TYPE B BLOWOFF VALVE PER STANDARD DETAILS SHEET 13.
 - AV5 INSTALL AIR VAC AT HIGH POINT PER STANDARD DETAILS SHEET 11.
- GENERAL NOTES**
- A ELEVATIONS SHOWN ARE APPROXIMATE AND MAY NOT BE ACCURATE AT TIME OF CONSTRUCTION.
 - B STATIONING WILL BE SUBJECT TO ACTUAL FIELD CONDITIONS AND MAY VARY FROM THAT SHOWN.
 - C CONTACT LPEA PRIOR TO WORK IF EXCAVATING WITHIN 5 FEET OF POWER POLES. MAINTAIN 5 FOOT SEPARATION BETWEEN POWER POLE AND WATERLINE.
 - D ALL FITTINGS ARE STANDARD UNLESS NOTED OTHERWISE. HORIZONTAL BENDS NOT SHOWN ARE TO BE PROVIDED AT NO EXTRA COST.
 - E PVI CHANGES MAY NOT REQUIRE FITTINGS, CHECK USABLE PIPE BEND RADIUS. USABLE PIPE BEND RADIUS NOT TO EXCEED 75% OF MANUFACTURERS RECOMMENDED ALLOWABLE.
 - F ALL LEGS OF WATER LINES AT VALVES SHALL HAVE MECHANICAL JOINT RESTRAINT (MJR) IN THE FORM OF MEGALUG 2000 SERIES PV MJR.
 - G CUTS WITHIN 4ft. OF EDGE OF ROAD TO BE FLOW FILLED TO WITHIN 6" OF TOP THEN 6" OF CLASS 6 AT 95% COMPACTION OR BACKFILLED WITH CLASS 6 ENTIRE DEPTH IN 12" LIFTS AT 95% COMPACTION VERIFIED BY TESTING.
 - H CUTS IN ROAD SURFACE SHALL BE FLOW FILLED TO WITHIN 8" OF TOP SURFACE. THEN MATCH LPC STANDARDS OF COMPACTED ROAD BASE WITH MAG CHLORIDE FOR TOP 8".
- LEGEND**
- WV WATER VALVE
 - FENCE
 - GUARD RAIL
 - OHE OVERHEAD POWERLINE
 - GAS GAS LINE
 - TEL UNDERGROUND TELEPHONE
 - EWL EXISTING WATERLINE
 - UEG UNDERGROUND ELECTRIC
 - WETLANDS
 - PROPOSED WATERLINE WITH SIZE SHOWN BY LINETYPE
 - FO FIBER OPTIC MARKER
 - TP TELEPHONE PEDESTAL
 - PP POWER POLE
 - TRB TRAUTNER BORING HOLE WITH BORE NUMBER ABOVE
 - PROPOSED CDOT ROADWAY
 - CONIFER TREE - CONIFER
 - DECIDUOUS TREE - DECIDUOUS

ELEVATIONS DERIVED FROM COUNTY GIS MAPS AND ARE FOR INFORMATIONAL PURPOSES ONLY. FIELD CONDITIONS MAY VARY.

24x36 SCALE: 1" = 40'
11x17 SCALE: 1" = 80'



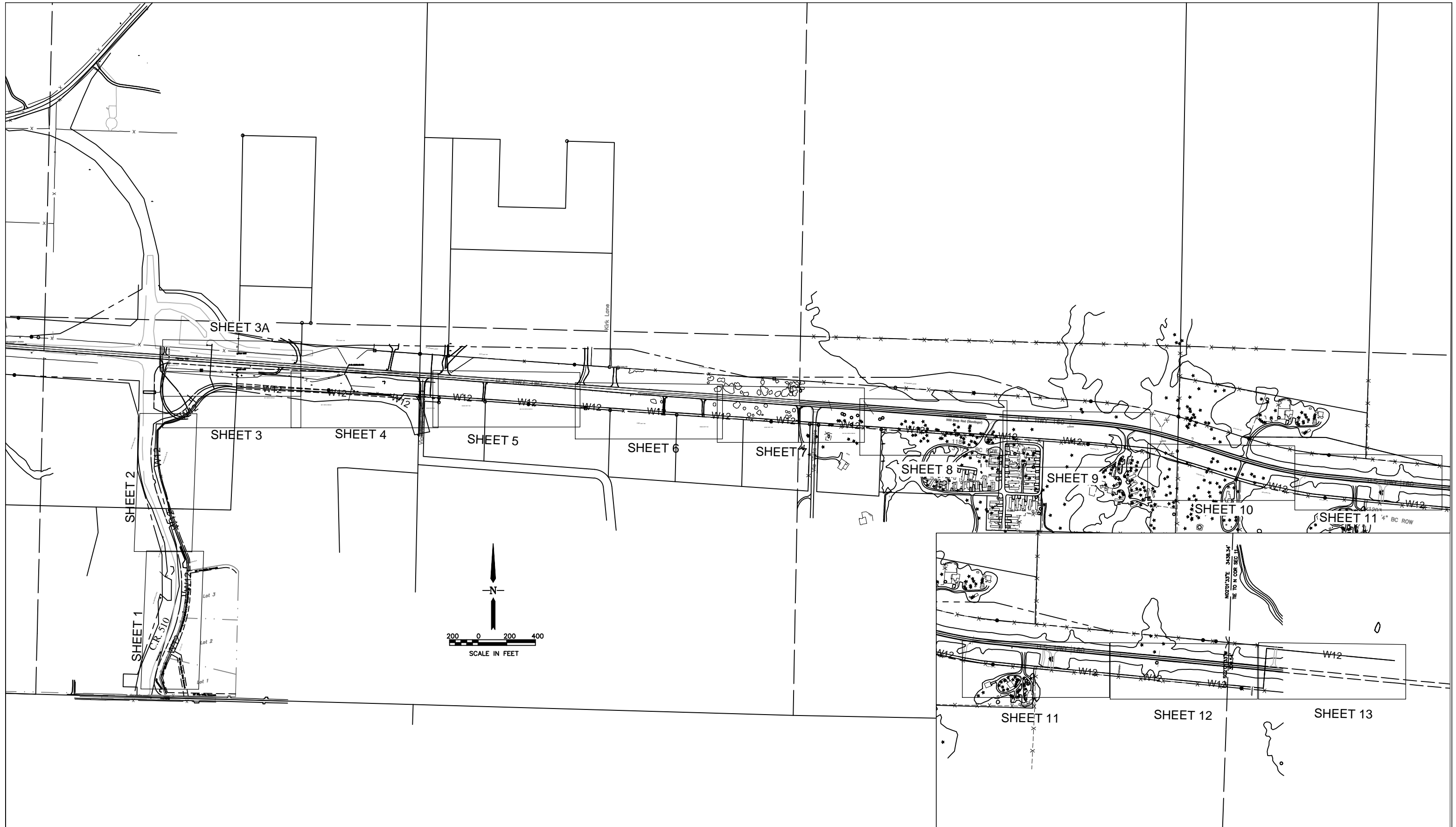
LA PLATA ARCHULETA WATER DISTRICT PHASE 1F WATER PIPELINE PLAN AND PROFILE

CALL UTILITY NOTIFICATION
CENTER OF COLORADO
1-800-922-1987 OR (811)
CALL 3 BUSINESS DAYS PRIOR
TO ANY CONSTRUCTION.

HARRIS WATER ENGINEERING INC.
954 East Second Ave.
Durango, Co. 81303
970-259-1028

DATE: 4/10/2017
REV 1 DATE: 5/9/2017
DRAWN BY: MG
CHECKED BY: BS

SHEET
13 OF 14



LA PLATA ARCHULETA WATER DISTRICT
 PHASE 1F WATER PIPELINE
 SHEET LOCATIONS

CALL UTILITY NOTIFICATION
 CENTER OF COLORADO
 1-800-922-1987 OR (811)
 CALL 3 BUSINESS DAYS PRIOR
 TO ANY CONSTRUCTION.

HARRIS WATER
 ENGINEERING INC.
 954 East Second Ave.
 Durango, Co. 81303
 970-259-1028

DATE: 4/10/2017
 REV 1 DATE: 5/9/2017
 DRAWN BY: MG
 CHECKED BY: BS